

LANGLADE COUNTY U.S. PUBLIC LAND CORNER RESTORATION

The East Quarter corner of Section 27, T. 34 N., R. 12 E., Langlade County, WI.

Corner was: (check all that apply)

43412272000

- Restored through acceptance of an obliterated evidence location.
- Restored through acceptance of a found perpetuated location.
- Determined to be lost and re-established through proportionate methods.
 Show bearings and distances to PLSS corners used for proportioning, and show original distances).
- Restored/recovered/re-established in a location that differs from a previously established position.
 (Show difference in plan view below).
- Check here if addition information is shown on the reverse side of this form.

Describe record evidence, recovered physical evidence, occupational evidence, testimonial evidence and all other evidence considered in the recovery/restoration of the corner.

The original corner was established in 1865 by James L. Nowlin. Original bearing trees: hemlock, 12", S57°W, 17 links and a birch, 16", S15°E, 20 links. In 1925, Malcolm Hutchinson established this corner by proportionate methods and marked a new BT: spruce, 17", N24°E, 27 links. In June of 1936 he measured west from this corner, 5318.45' to the W1/4 corner of Sec. 27. In 1970, Ray Hallisy: "Found wood stake down, marked W.C. 36 Links N. to Cor. 2" iron pipe." 36 links = 23.76'. He: "Set 2" iron pipe with brass cap in cement monument 4" x 2 Ft." and marked bearing trees for th WC. 08/14/04 D. Tlusty found Hallisys iron pipe with b/cap witness monument, bent and lying on ground on south side of road, but with no concrete. Approx. 23.76 feet north of destroyed WC, I found 2 railroad spikes, a PK nail and another small nail, all within 0.1'. From this position, Higginbotham measured 5323.35' to the W1/4 corner of Sec. 27 which is within 4.9' of Hutch's distance. I accept the evidence found as the best location for the 1/4 corner.

Physical description of the monument set:

I replaced the existing spikes with a 3/4" x 30" rebar, top of which is 0.3' below the road surface.
 I set a Berntsen Deep1 magnet on the east edge of the rebar.
 I straightened Hallisys WC (2" OD x 42" ip w/brass cap) and drove it flush with the ground as shown below.

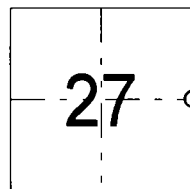
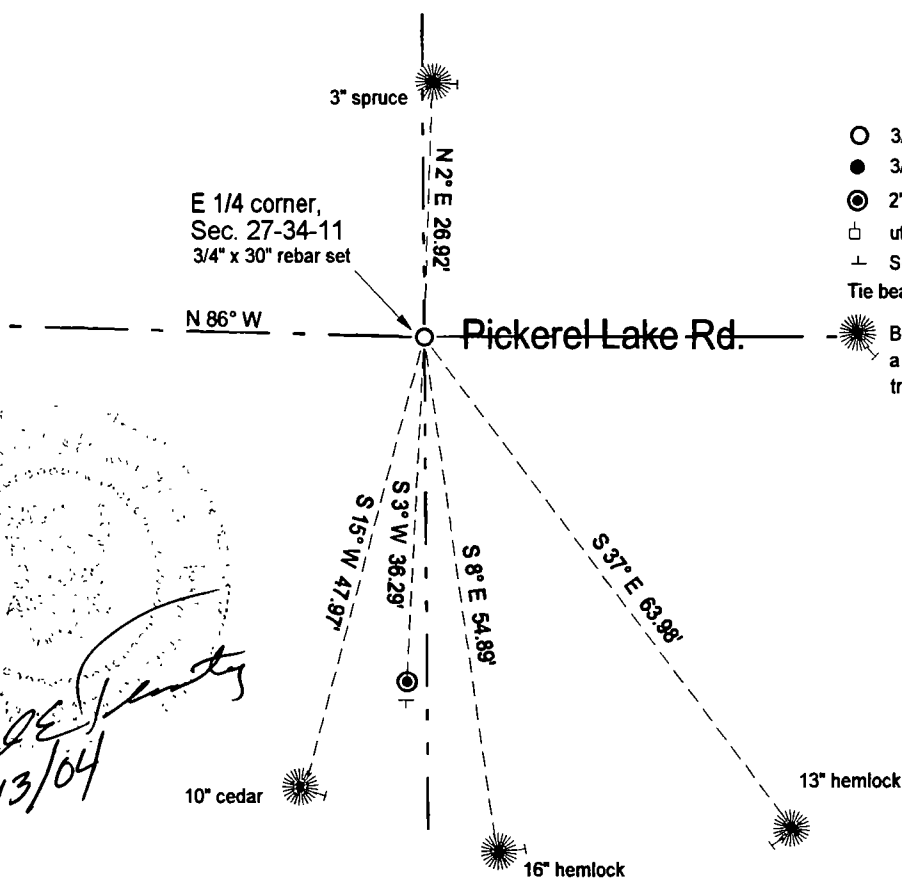
Describe the accessories used to perpetuate the corner. Include a plan view drawing and accessories found/set. Describe measuring point on bearing trees. Show any topographic features that would aid in future recovery of the corner.

Field book 17-128



LEGEND

- 3/4" x 30" rebar set
- 3/4" iron pipe found
- ⊙ 2" exist. witness monument found & reset
- utility pole
- ⊥ Set white vinyl sign post, 0.5' S of WM
- Tie bearings magnetic with hand compass.
- ☼ BT's measured to aluminum nail in a low blaze on the side of the trees shown:



○ = corner perpetuated
 The East Quarter corner of Section 27, T. 34 N., R. 12 E., Langlade County, WI

David E. Tlusty
 8/13/04

I, David E. Tlusty, Registered Land Surveyor, as Langlade County Surveyor, certify that the corner location on this record was determined by me and that this U.S. Public Land Survey Monument Record is correct to the best of my knowledge and belief.

Index No. T17 34-12

CERTIFIED LAND CORNER RESTORATION

34-12
Index No. T-17

State of Wisconsin }
County of L. nglade } ss.

History of original corner establishment:

I Raymond J. Hallisy do hereby certify that on the 5th day of Sept., 19 70, I found evidence of the East 1/4 corner of Section 27 Township 34, North, Range 12, Fourth, Principal Meridian, as described hereon; and that from this evidence I established a new monument and accessories as described hereon to perpetuate the original location of this corner.

Description of corner evidence found:

Found wood stake down, marked W.C. 36 Links N. to Cor. 2" iron pipe.

Resident witnesses:

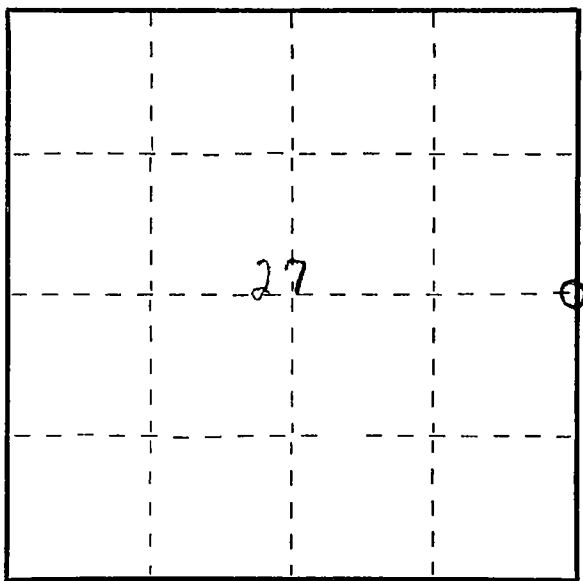
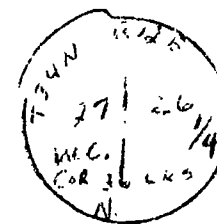
J. W.
G. K.

Description of monument and accessories I established to perpetuate the original location of this corner.

Set 2" iron pipe with brass cap in cement monument ~~32~~ 4" by 2 Ft.

~~NEW MONUMENT~~

New B.T.'s
Balsam 8" S32E 12 Links
He lock 10" S60E 30.6 Links
B.T.'s faced at base of tree and scribed BT.



○ = Corner monument restored.

Dated at ant go Wis., this 5th day of Sept., 19 70

Signature Raymond J. Hallisy Title Reg. Land Surveyor Registration No. S-685
(County Surveyor, Registered Land Surveyor, or other duly authorized official)

Office of Register of Deeds, County of _____, I hereby certify that the within instrument was filed in this office for record on the _____ day of _____, 19 _____ at _____ o'clock _____ M.

(Register of Deeds)

By _____ Deputy

FORM 985 K. C. MILLER CO., MILWAUKEE