

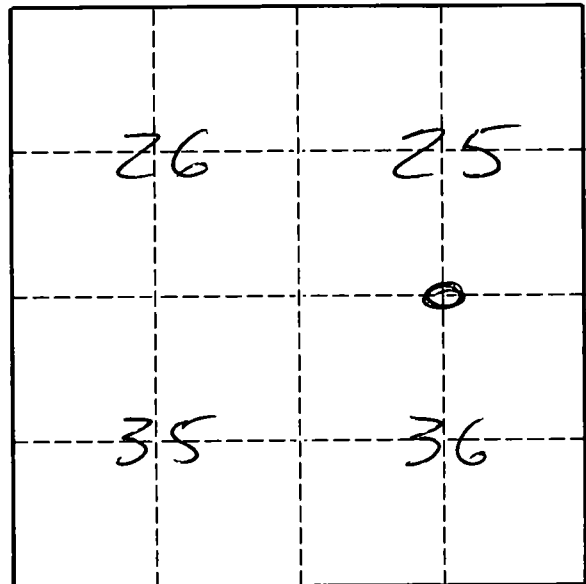
U. S. PUBLIC LAND SURVEY MONUMENT RECORD

INSTRUCTIONS:

This record shall show the location of the corner and shall include all of the following nine elements (a through i).

- (a) Identify the corner by reference to the U.S. public land survey system.
 O = Corner monument restored

South Quarter corner of
 Section 25,
 Township 34 North,
 Range 12 East,
 Langlade County,
 Wisconsin.



T. 34 N., R. 12 E.

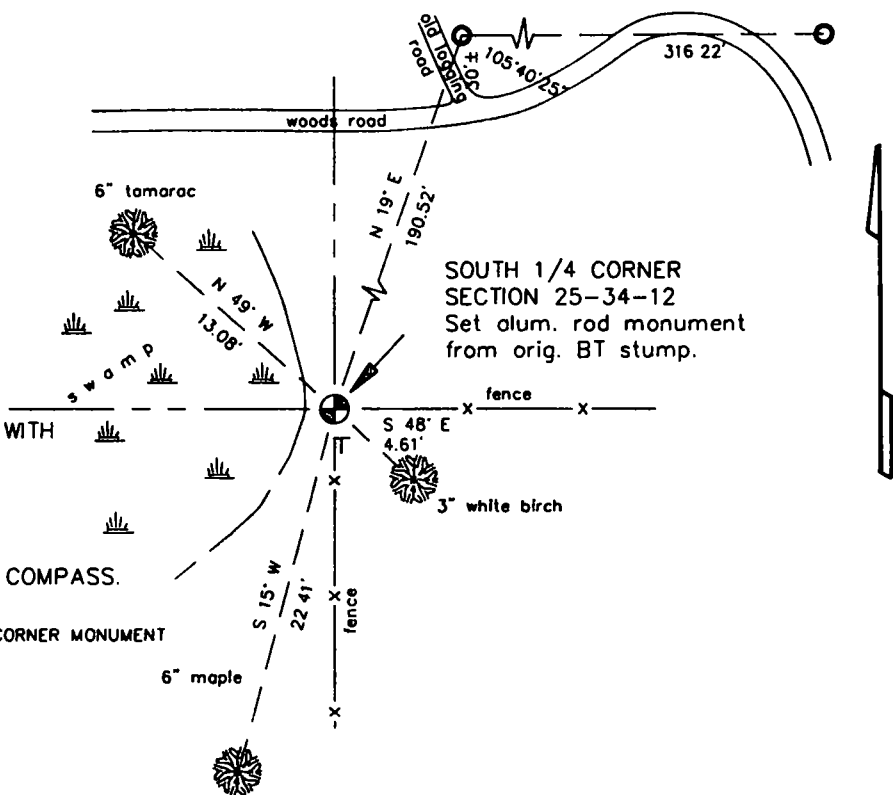
- (b) Describe any record evidence, monument evidence, occupational evidence, testimonial evidence or any other material evidence you considered, and whether the monument was found or placed.

The original corner was established in 1865 by James L. Nowlin. Original BT's: white pine, 30", N09°W, 3 lks. (1.98'), hemlock, 12", S15°W, 30 lks. In 1942, Malcolm Hutchinson didn't describe this corner, but measured from it to the west. 08/10/95 D. Tlusty found original pine BT stump at NW side of fence corner. Fence runs East and South. Measured S 09° E, 1.98 feet from stump to reset quarter corner. Set 3/4" x 36" aluminum rod monument for the corner, which is 0.5' WNW of fence corner. Bearing trees measured to aluminum nail in low blaze on side of tree.

- (c) In the plan view drawing below, provide reference ties to at least 4 witness monuments, or, if the location is within a municipality, to at least 2 witness monuments. (Witness monuments shall be made of concrete, natural stone, iron or other equally durable material.) Describe witness monuments.

- (d) Show a plan view drawing depicting the relevant monuments and reference ties which is sufficient in detail to enable accurate relocation of the corner monument if the corner monument is disturbed. Indicate north.

- NOTES:**
- 3/4" X 36" ALUM. MON. ROD WITH ALUMINUM CAP SET
 - 3/4" RE-BAR WITNESS SET
- BEARINGS MAGNETIC WITH HAND COMPASS.
- T VINYL SIGN POST SET 0.5' SOUTH OF CORNER MONUMENT



123

Describe any material discrepancy between the location of the corner as restored or reestablished and the location of that corner as previously restored or reestablished by distance and direction. Show the discrepancy on the plan view drawing under (d), above. Show the distances between the corner as previously restored or reestablished and (1) the corner as restored or reestablished, and (2) to at least 2 of the witness monuments shown on the drawing in (d), above.

No discrepancy.

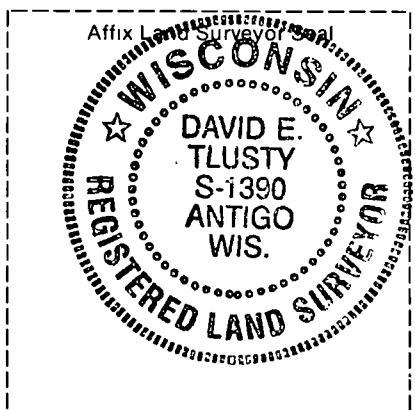
(f) Was the corner restored through acceptance of (1) an obliterated evidence location, or, (2) a found perpetuated location ?
A found perpetuated location.

(g & h) Was the corner reestablished through lost corner proportionate methods? If so, show the method, including the directions and distances to other public land survey corners used as evidence or used for proportioning in determining the corner location.

No.

(i) I, David E. Tlusty, Langlade County Surveyor,
(type or print name)

certify that the corner location shown on this record was determined by me or under my direction and control and that this U.S. Public Land Survey Monument Record is correct and complete to the best of my knowledge and belief.



David E. Tlusty 7/18/96
Signature Date

