

CERTIFIED LAND CORNER RESTORATION

Index No. P-19

State of Wisconsin }
County of LANGLADE } ss.

I, WILLIAM F. KELLY, do hereby certify that on the 21st day of Nov., 1980, I found evidence of the CENTER corner of SECTION 23 Township 24, North, Range 12 EAST, Fourth Principal Meridian, as described hereon; and that from this evidence I established a new monument and accessories as described hereon to perpetuate the original location of this corner.

Resident witnesses:

.....
.....
.....

History of original corner establishment:

NONE.

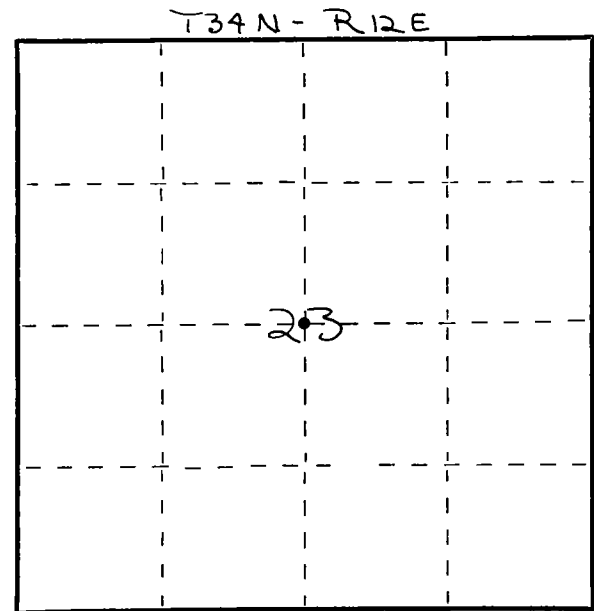
Description of corner evidence found:

CORNER ESTABLISHED AT THE INTERSECTION OF THE E-W & N-S 1/4 LINES SECT 23 T34N R12E



William F. Kelly

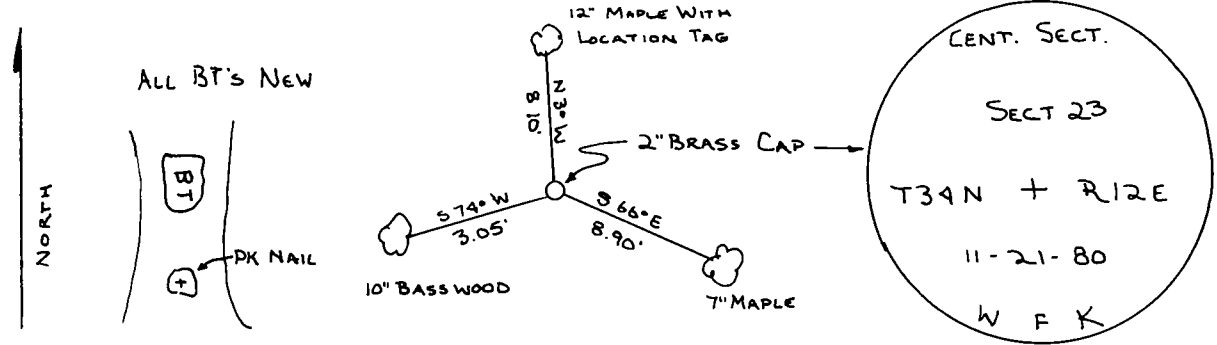
SET 2" x 42" BLACK IRON PIPE WITH BRASS CAP MONUMENT
Description of monument and accessories I established to perpetuate the original location of this corner.



○ = Corner monument restored.

SET 2" x 42" BLACK IRON PIPE WITH BRASS CAP MONUMENT

Description of monument and accessories I established to perpetuate the original location of this corner.



Dated at ELCHO, Wis., this 21st day of NOV., 1980.

Signature William F. Kelly Title COUNTY SURVEYOR Registration No. 1098
(County Surveyor, Registered Land Surveyor, or other duly authorized official)

Office of Register of Deeds, County of, I hereby certify that the within instrument was filed in this office for record on the day of, 19..... at o'clock M.

.....
(Register of Deeds)

By..... Deputy