

CERTIFIED LAND CORNER RESTORATION

Index No. P-20

State of Wisconsin }
 County of LANGLADE } ss.

History of original corner establishment:
 NONE.

I, WILLIAM F. KELLY, do hereby certify that on the 21st day of Nov., 1980, I found evidence of the E 1/8 COR. ON E-W 1/4 LINE corner of SEC. 23 Township 34, North, Range 12 EAST, Fourth Principal Meridian, as described hereon; and that from this evidence I established a new monument and accessories as described hereon to perpetuate the original location of this corner.

Description of corner evidence found:
CORNER ESTABLISHED AT MID POINT BETWEEN THE CENTER AND THE E 1/4 COR SECT 23 T34N R12E

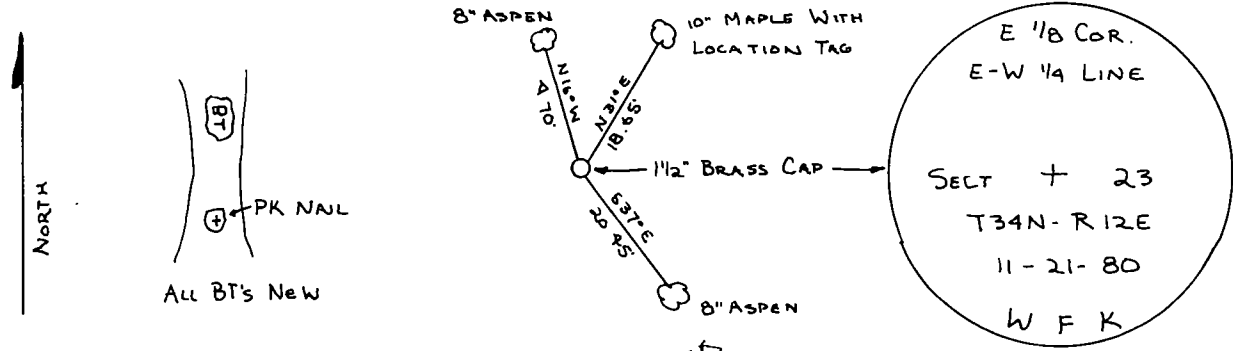
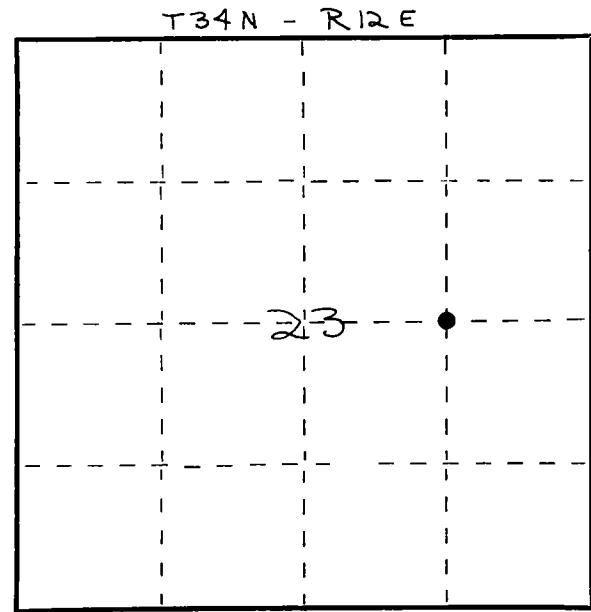


William F. Kelly

Resident witnesses:

.....

SET 1 1/2" x 42" BLACK IRON PIPE WITH BRASS CAP MONUMENT.
 Description of monument and accessories I established to perpetuate the original location of this corner.



Dated at ELCHO, Wis., this 21st day of NOV., 1980.

Signature: *William F. Kelly* Title COUNTY SURVEYOR Registration No. 1098
 (County Surveyor, Registered Land Surveyor, or other duly authorized official)

Office of Register of Deeds, County of, I hereby certify that the within instrument was filed in this office for record on the day of, 19..... at o'clock M.

.....
 (Register of Deeds)
 By..... Deputy

○ = Corner monument restored.

FORM 985 H. C. MILLER CO. MILWAUKEE