

CERTIFIED LAND CORNER RESTORATION

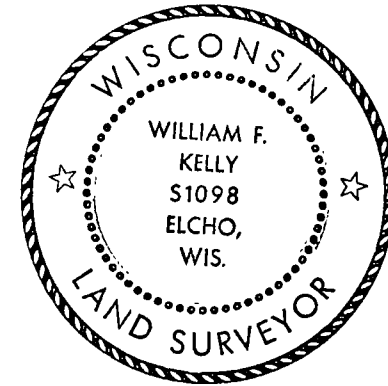
Index No. Q-19

State of Wisconsin }
 County of LANGLADE } ss.

History of original corner establishment:
 NONE

I WILLIAM F. KELLY, do hereby certify that on the 21st day of Nov., 19 80, I found evidence of the S 1/8 COR. ON N-S 1/4 LINE corner of SEC. 23 Township 34, North, Range 12 EAST, Fourth Principal Meridian, as described hereon; and that from this evidence I established a new monument and accessories as described hereon to perpetuate the original location of this corner.

Description of corner evidence found:
Corner Established from Central Survey of the SW 1/2 Sect 23

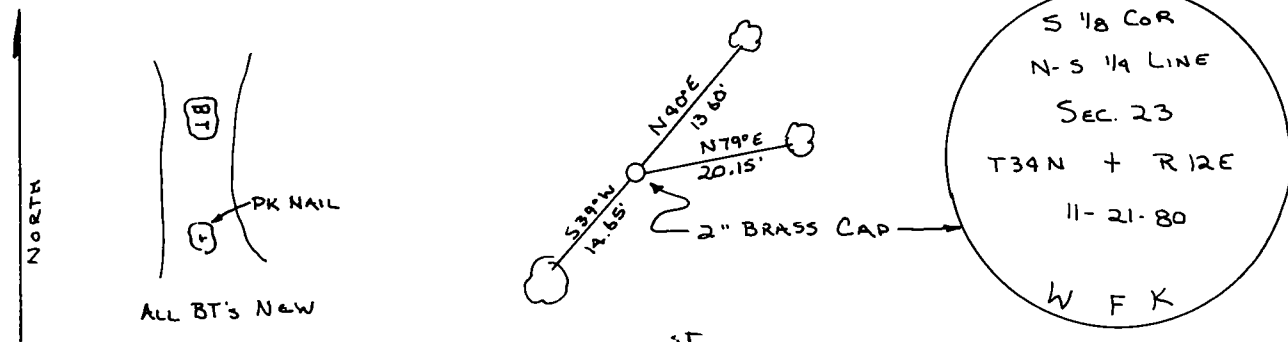
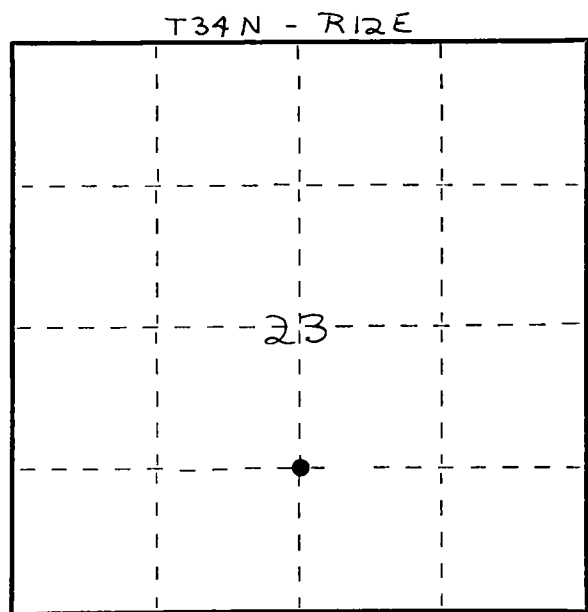


William F. Kelly

Resident witnesses:

.....

SET 2" x 42" BLACK IRON PIPE WITH BRASS CAP MONUMENT
 Description of monument and accessories I established to perpetuate the original location of this corner.



Dated at ELCHO, Wis., this 21st day of NOV, 19 80

Signature William F. Kelly Title COUNTY SURVEYOR Registration No. 1098
 (County Surveyor, Registered Land Surveyor, or other duly authorized official)

Office of Register of Deeds, County of, I hereby certify that the within instrument was filed in this office for record on the day of, 19..... at o'clock M.

(Register of Deeds)

By Deputy

○ = Corner monument restored.