

CERTIFIED LAND CORNER RESTORATION

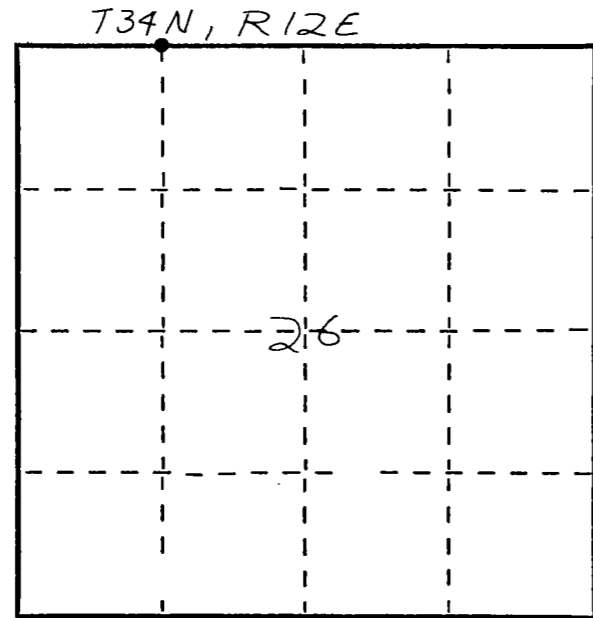
Index No. R-18

State of Wisconsin }
 County of L.A.N.G.L.A.D.E } ss.

I WILLIAM F. KELLY, do hereby certify that on the 18th day of AUGUST, 1981, I found evidence of the W 1/8 corner of ON N. LINE OF SECTION 26 Township 24, North, Range 12 E, Fourth Principal Meridian, as described hereon; and that from this evidence I established a new monument and accessories as described hereon to perpetuate the original location of this corner.

Resident witnesses:

.....



○ = Corner monument restored.

History of original corner establishment:

ORIGINAL CORNER ESTABLISHED BY
 JAMES L. NOWLIN IN 1865.

Description of corner evidence found:

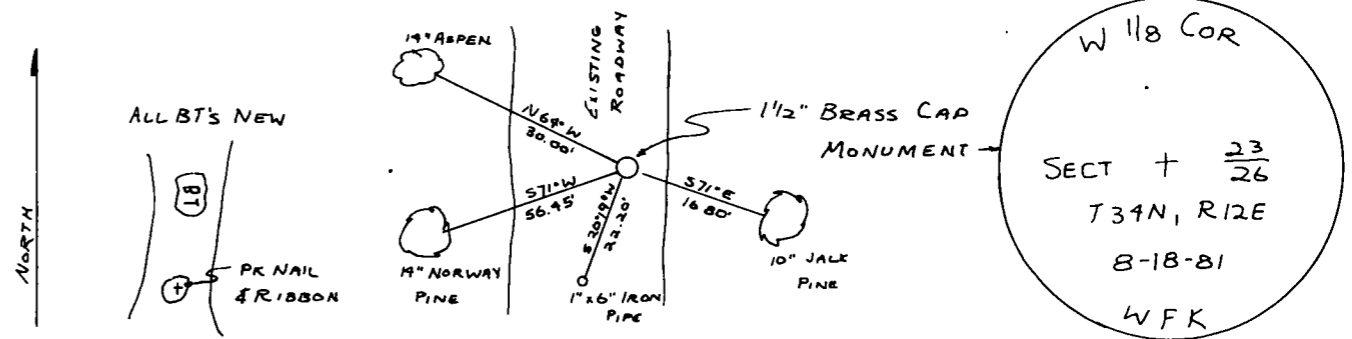
EQUALLY DIVIDED THE DISTANCE BETWEEN
 EXISTING N 1/4 CORNER AND EXISTING NW SEC. CORNER.



William F. Kelly

SET A 1 1/2" x 42" BLACK IRON PIPE WITH BRASS CAP MONUMENT.

Description of monument and accessories I established to perpetuate the original location of this corner.



Dated at ELCHO, Wis., this 18th day of AUGUST, 1981

Signature William F. Kelly Title COUNTY SURVEYOR Registration No. 1098
 (County Surveyor, Registered Land Surveyor, or other duly authorized official)

Office of Register of Deeds, County of _____, I hereby certify that the within instrument was filed in this office for record on the _____ day of _____, 19____ at _____ o'clock _____ M.

.....
 (Register of Deeds)

By _____ Deputy