

CERTIFIED LAND CORNER RESTORATION

Index No. R-19

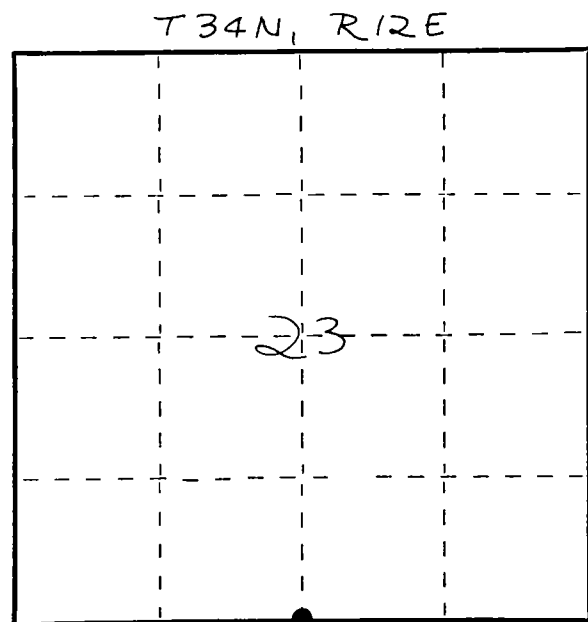
State of Wisconsin }  
County of LANGLADE } ss.

I WILLIAM F. KELLY, do hereby certify that on the 18<sup>th</sup> day of AUGUST, 1980, I found evidence of the S. 1/4 corner of SECTION 23 Township 34, North, Range 12 E, Fourth Principal Meridian, as described hereon; and that from this evidence I established a new monument and accessories as described hereon to perpetuate the original location of this corner.

Resident witnesses:

.....  
.....  
.....

FORM 985 H. C. MILLER CO., MILWAUKEE



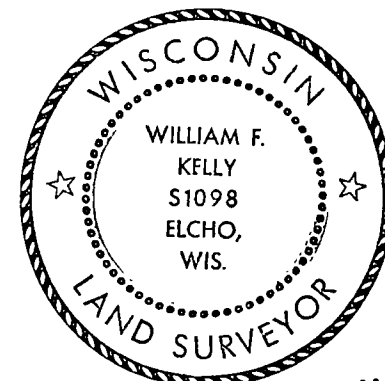
○ = Corner monument restored.

History of original corner establishment:

ORIGINAL CORNER ESTABLISHED BY J. NOWLIEN IN MAY OF 1865.

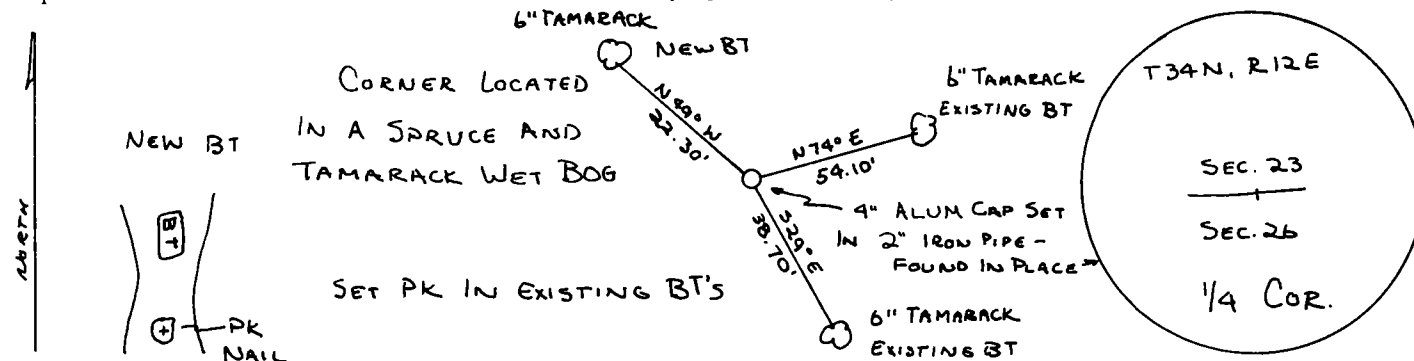
Description of corner evidence found:

4" ALUM. CAP SET IN 2" PIPE FOUND IN PLACE.  
MARKED WITNESS TREES WITH P.K. NAIL.



*William F. Kelly*

Description of monument and accessories I established to perpetuate the original location of this corner.



Dated at ELCHO, Wis., this 20<sup>th</sup> day of AUGUST, 1980.

Signature William F. Kelly Title COUNTY SURVEYOR Registration No. 1098  
(County Surveyor, Registered Land Surveyor, or other duly authorized official)

Office of Register of Deeds, County of ....., I hereby certify that the within instrument was filed in this office for record on the ..... day of ....., 19..... at ..... o'clock ..... M.

.....  
(Register of Deeds)  
By..... Deputy