

CERTIFIED LAND CORNER RESTORATION

Index No. R-15

State of Wisconsin }
County of Langlade } ss.

History of original corner establishment:

I, Thomas R. Arnott, do hereby certify that on the 5 day of May, 1981, I found evidence of the 1/4 corner of sections 22 and 27 Township 34, North, Range 12 E, Fourth Principal Meridian, as described hereon; and that from this evidence I established a new monument and accessories as described hereon to perpetuate the original location of this corner.

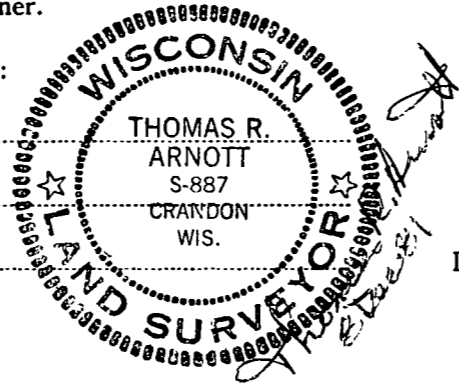
Orig. by Jas. L. Nowlin
May 18 thru June 1, 1865

Sugar 20 N10E 7 lks.
Lind 15 S50E 55 lks.

Description of corner evidence found:

No corner evidence found. The corner I set was half way and on line between the section corner 21, 22, 27 and 28 and the section corner 22, 23, 26 and 27.

Resident witnesses:

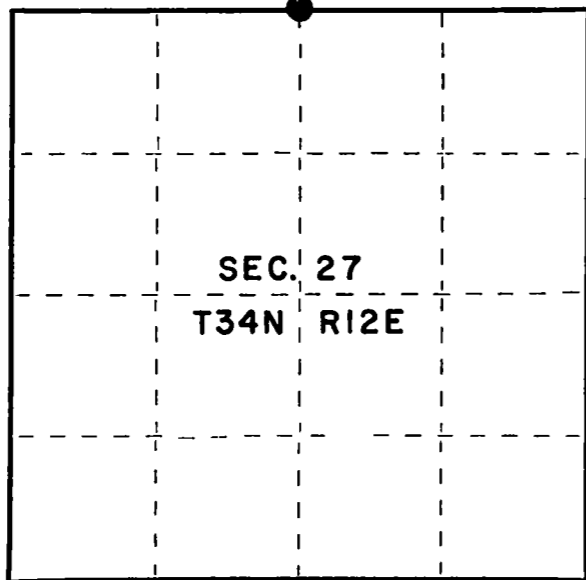
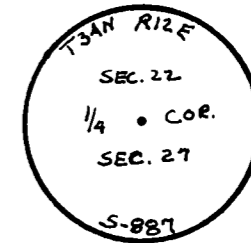


Description of monument and accessories I established to perpetuate the original location of this corner.

Set standard Langlade Co. monument 2"x4" with Brass cap.

Ties:

W. Spruce 10 N8E 17.71 feet
N. Pine 16 S42W 15.02 feet
W. Pine 14 S18E 43.24 feet



Dated at Crandon, Wis., this 8th day of December, 1981.

Signature Thomas R. Arnott Title Surveyor Registration No. S-887
(County Surveyor, Registered Land Surveyor, or other duly authorized official)

Office of Register of Deeds, County of Langlade, I hereby certify that the within instrument was filed in this office for record on the _____ day of _____, 19____ at _____ o'clock _____ M.

(Register of Deeds)

By _____ Deputy

○ = Corner monument restored.

FORM 985 H. C. MILLER CO., MILWAUKEE