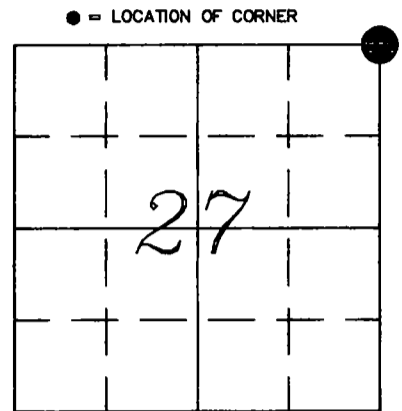


U.S. PUBLIC LAND SURVEY MONUMENT RECORD

HISTORY OF ORIGINAL CORNER ESTABLISHMENT AND SUBSEQUENT RESTORATION AND DESCRIPTION OF ANY RECORD, MONUMENT OCCUPATIONAL, TESTIMONIAL OR OTHER EVIDENCE CONSIDERED:

The original corner was established in 1865 by James L. Nowlin. One Original bearing tree: Hemlock 8", N51W, 200lks. In 1925, Hutchinson traversed North from the SE Corner of Sec 27 two miles (160 chains, 57.5 lks) to the NE Cor of Sec 22. He does not mention the NE Cor of Sec 27, but it is probable he perpetuated the corner because he set the "North 1/8 Post" in the NW 1/4 of Sec 26. Sometime in the early 1990's, Tom Arnott found a 1 1/4" Pipe at the NE Cor of Sec 27 and tied it out although he never filed a tie sheet. A copy of his notes was found at the Langlade Co. Surveyor's Office. On Jan 7, 2002 Charley Brinkmeier and Gerry Bahar found a 2" Brass Capped Pipe next to Arnott's 1 1/4" Pipe and Arnott's Bearing Trees that were dead. We accepted the Brass Capped Pipe as the Corner Location and retied.

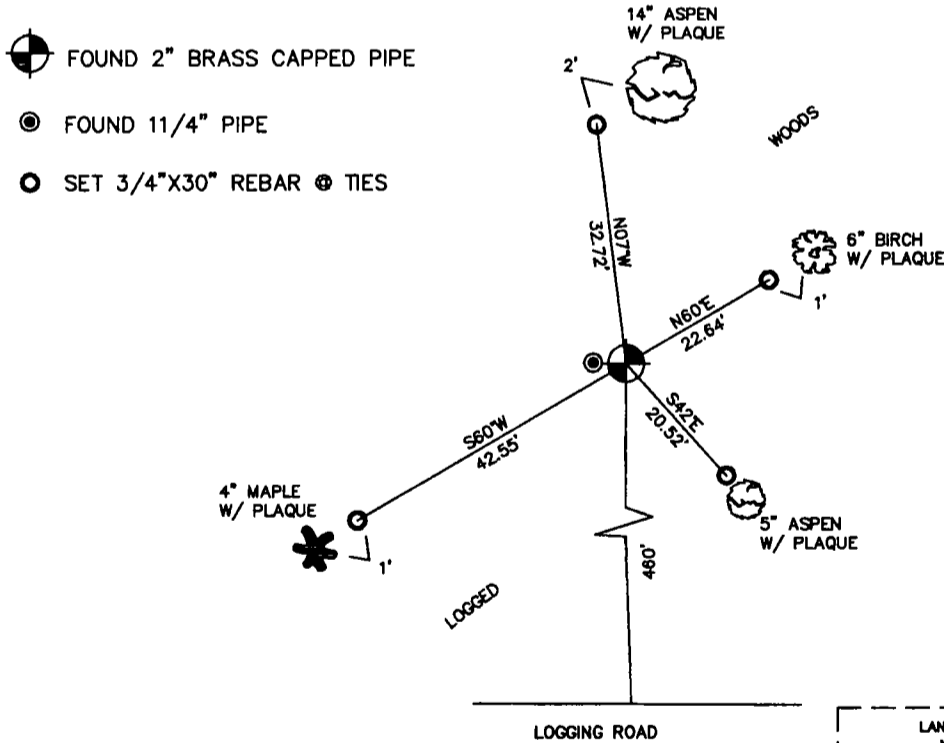


SECTION 27
 TOWNSHIP 34 NORTH, RANGE 12 EAST
 TOWN OF AINSWORTH-NORTH
 LANGLADE COUNTY, WISCONSIN

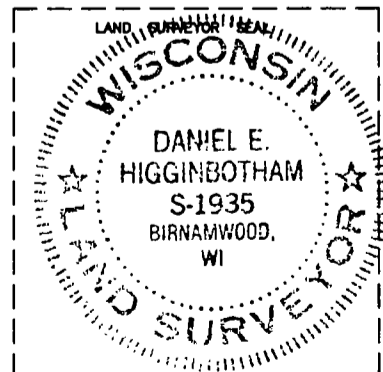
CORNER WAS: (CHECK ALL THAT APPLY)

- RESTORED THROUGH ACCEPTANCE OF AN OBLITERATED EVIDENCE LOCATION
- RESTORED THROUGH ACCEPTANCE OF A FOUND PERPETUATED LOCATION
- CONSIDERED A LOST CORNER AND REESTABLISHED THROUGH LOST CORNER PROPORTIONATE METHODS (INCLUDE A PLAN VIEW DRAWING SHOWING DISTANCES AND DIRECTIONS TO OTHER PUBLIC LAND SURVEY CORNERS USED FOR PROPORTIONING AND DETERMINING THE CORNER LOCATION)
- RESTORED OR REESTABLISHED IN A LOCATION THAT DIFFERS FROM A PREVIOUS RESTORATION OR REESTABLISHMENT (INCLUDE A PLAN VIEW DRAWING AND INDICATE WHAT WAS SET AND/OR FOUND)
- CHECK IF THERE IS ADDITIONAL INFORMATION ON BACK

DESCRIBE THE MONUMENT AND ACCESSORIES USED TO PERPETUATE THE LOCATION OF THE CORNER. (INCLUDE A PLAN VIEW DRAWING AND INDICATE WHAT WAS SET AND/OR FOUND) ALSO INCLUDE FOUR TIES TO THE SECTION CORNER AND DESCRIPTION OF THE TIES.



DANIEL E. HIGGINBOTHAM
 (type or print name) CERTIFY THAT THE CORNER LOCATION SHOWN ON THIS RECORD WAS DETERMINED BY ME OR UNDER MY DIRECTION AND CONTROL AND THAT THIS U.S. PUBLIC LAND SURVEY MONUMENT RECORD IS CORRECT AND COMPLETE TO THE BEST OF MY KNOWLEDGE AND BELIEF.
Daniel E. Higginbotham
 SIGNATURE 3/19/02
 DATE



INDEX NO. R17