

CERTIFIED LAND CORNER RESTORATION

34-12
Index No. 2-13

State of Wisconsin }
County of Lan glade } ss.

History of original corner establishment:

Corner set by R. J. Hallisy and forestry crew on a trespass survey.

I, Raymond J. Hallisy, do hereby certify that on the 10th day of May, 19 69, I found evidence of the S 1/16 corner of Section 22 Township 34, North, Range 12E, Fourth, Principal Meridian, as described hereon; and that from this evidence I established a new monument and accessories as described hereon to perpetuate the original location of this corner.

Description of corner evidence found:

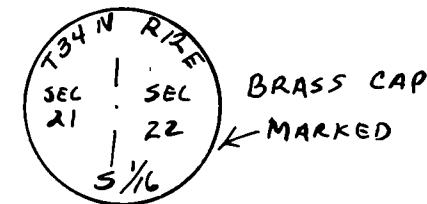
Found squared oak stake

Resident witnesses:

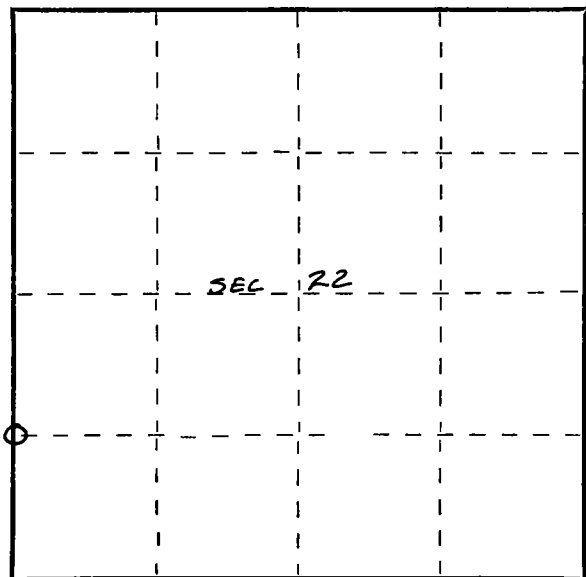
.....
.....
.....

Description of monument and accessories I established to perpetuate the original location of this corner.

Set 2" pipe with brass cap
B.T.'s to corner
Red maple clump 8" S65W 6Ft. 8 inches
Oak 7" S41E 8Ft. 2 inches
B.T.'s faced at base of tree and scribed BT



FORM 985 H. C. MILLER CO., MILWAUKEE



○ = Corner monument restored.

Dated at Antigo, Wis., this 10th day of May, 19 69.

Signature Raymond J. Hallisy Title Reg. Land Surveyor Registration No. S-685
(County Surveyor, Registered Land Surveyor, or other duly authorized official)

Office of Register of Deeds, County of _____, I hereby certify that the within instrument was filed in this office for record on the _____ day of _____, 19 _____ at _____ o'clock _____ M.

.....
(Register of Deeds)

By _____ Deputy

CERTIFIED LAND CORNER RESTORATION

39-12
 Index No. Q 13
~~13~~
~~13~~
 R-13

State of Wisconsin }
 County of LANGLADE } ss.

I RAYMOND J. WALLISY, do hereby certify that on the APRIL 27 day of APRIL 27, 1965, I found evidence of the E 1/4 COR.; SE. SEC. COR corner of Sec 21 Township 34N, North, Range 12E, Fourth Principal Meridian, as described hereon; and that from this evidence I established a new monument and accessories as described hereon to perpetuate the original location of this corner.

Resident witnesses:

.....

.....

.....

History of original corner establishment:

o E 1/4 COR - REESTABLISHED IN 1936 BY C.W. BORTH.

Description of corner evidence found:

o E 1/4 COR OLD CAR AXLE - 16" BELOW GROUND LEVEL; BROKE GLASS AROUND AXLE

OLD BT - WH. PINE STUMP 14" 538°W - 172'

Description of monument and accessories I established to perpetuate the original location of this corner.

o E 1/4 - CORNER REMAINS AS STATED ABOVE

NEW BTS - WH. PINE 18" - N60°15'W 346 LKS
WH. PINE 14" - N74°15'W 301 LKS

x 1/16 CORNER 6" SQ. OAK POST BT OAE 6" - 552°W 215 LKS

TRANSIT SURVEY - SEE BACK OF SHEET

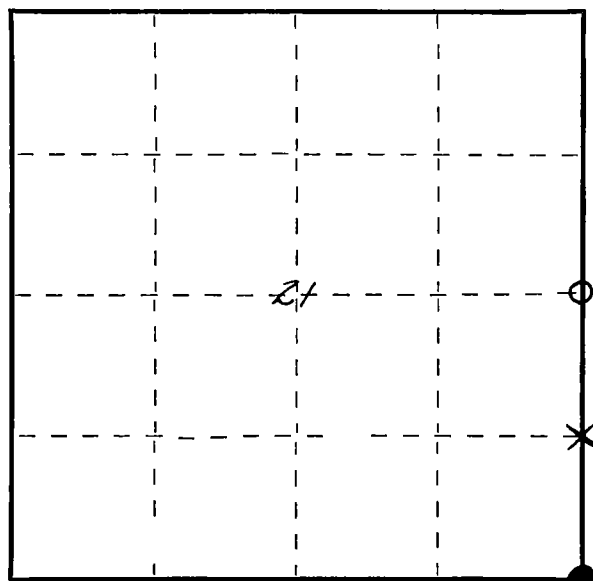
Dated at ANTIGO, Wis., this 10 day of JANUARY, 1966.

Signature Raymond J. Wallisy Title Asst Dist Forester - WOOD Registration No. 5-685
 (County Surveyor, Registered Land Surveyor, or other duly authorized official)

Office of Register of Deeds, County of....., I hereby certify that the within instrument was filed in this office for record on the.....day of....., 19..... at.....o'clock..... M.

.....
 (Register of Deeds)

By..... Deputy



o = Corner monument restored. FOUND
 x = " SET

RESURVEY

AINSWORTH Township 34 North - Range 12 East

Resurvey

Section 21 , Township 34 North Range 12 East
Langlade County.

Survey Line Between:

1. East $\frac{1}{4}$ Corner and South East Section Corner of
Section 21-T34N-R12E.

This survey was run off of established corners which
were set by C.W.Borth in 1936.

April 27, 1965

Transit survey - 2 chain tape - 200 links.

Commence at East $\frac{1}{4}$ corner section 21-34-12.

Corner set by C.W.Borth

Old Car axle with broken glass
buried 16 inches under surface
in field.

Old BT

White Pine 14 S38W 172 feet

New BT

" " 18 N60 15 W 346 links

" " 14 N74 15 W 301 Links

South on Random Line S2 E @ 2° E. Dec.

19.00
40.75

Across Field and enter timber
Fell 122 links East of Section corner
21, 22, 27, 28

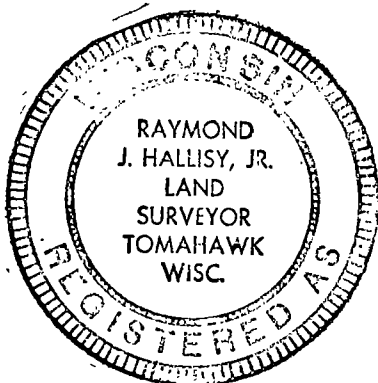
South Corrected

20.375

Set 1/16 Corner

Oak Post 6 inches

BT Oak 6 S 52 W 21.5 Links



BY: Raymond J. Hallisy
Raymond J. Hallisy
Registered Surveyor
W.S. Deat. Foustie