

CERTIFIED LAND CORNER RESTORATION

Index No. N-19

State of Wisconsin }
County of LANGLADE } ss.

I WILLIAM F. KELLY, do hereby certify that on the 19th day of AUGUST, 19 80, I found evidence of the N. 1/4 corner of SECTION 23 Township 34, North, Range 12 E, Fourth Principal Meridian, as described hereon; and that from this evidence I established a new monument and accessories as described hereon to perpetuate the original location of this corner.

Resident witnesses:

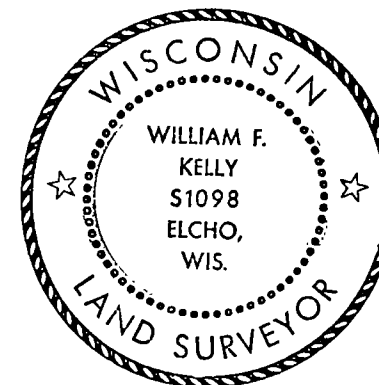
.....
.....
.....

History of original corner establishment:

ORIGINAL CORNER ESTABLISHED BY J. NOWLIEN IN MAY OF 1865.

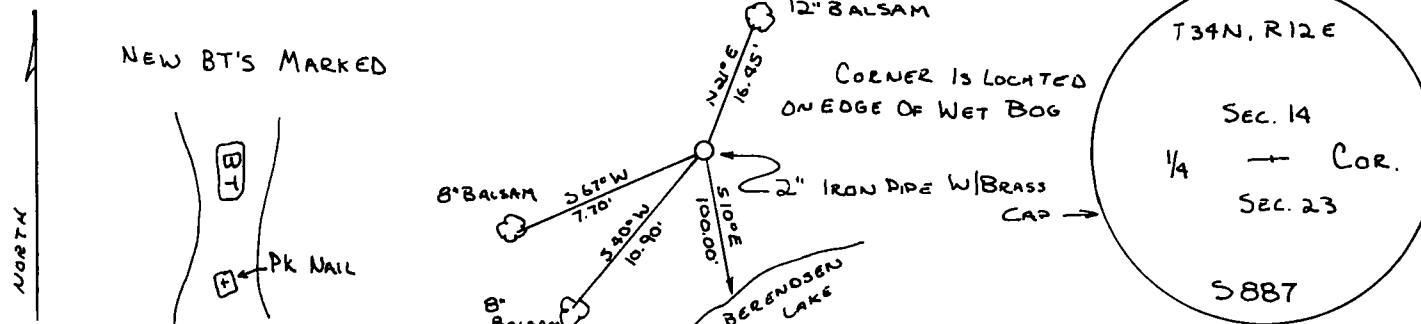
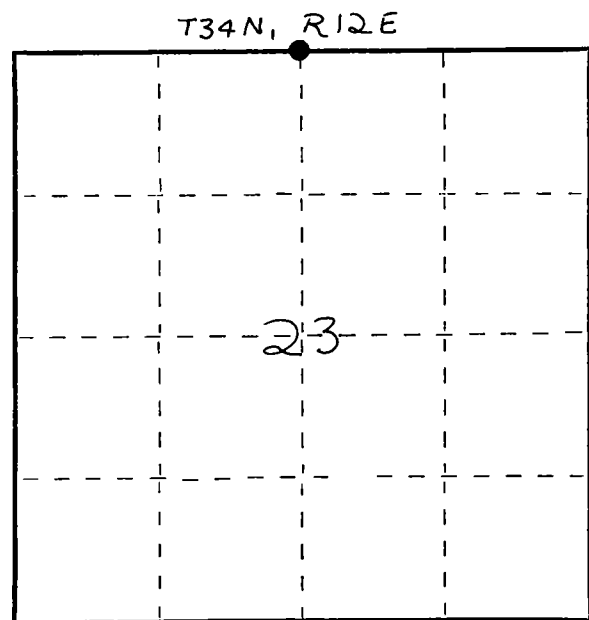
Description of corner evidence found:

LOCATED CORNER SET BY T. ARNOTT, R.L.S. 5887
2" IRON PIPE WITH BRASS CAP MONUMENT
MARKED NEW WITNESS TREES.



William F. Kelly

Description of monument and accessories I established to perpetuate the original location of this corner.



Dated at ELCHO, Wis., this 20th day of AUGUST, 19 80.

Signature: *William F. Kelly* Title: COUNTY SURVEYOR Registration No. 1098
(County Surveyor, Registered Land Surveyor, or other duly authorized official)

Office of Register of Deeds, County of _____, I hereby certify that the within instrument was filed in this office for record on the _____ day of _____, 19 _____ at _____ o'clock _____ M.

.....
(Register of Deeds)

By..... Deputy

FORM 985 H. C. MILLER CO., MILWAUKEE

○ = Corner monument restored.