

CERTIFIED LAND CORNER RESTORATION

84-12

Index No. N-21

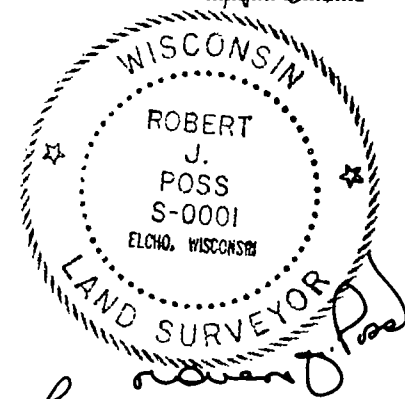
State of Wisconsin }  
County of LANGLADE } ss.

History of original corner establishment:

I, ROBERT J. POSS, do hereby certify that on the 13<sup>TH</sup> day of JUNE, 1968, I found evidence of the SECTION corner of SECS. 13-14-23-24 Township 34, North, Range 12 EAST, Fourth, Principal Meridian, as described hereon; and that from this evidence I established a new monument and accessories as described hereon to perpetuate the original location of this corner.

Description of corner evidence found:

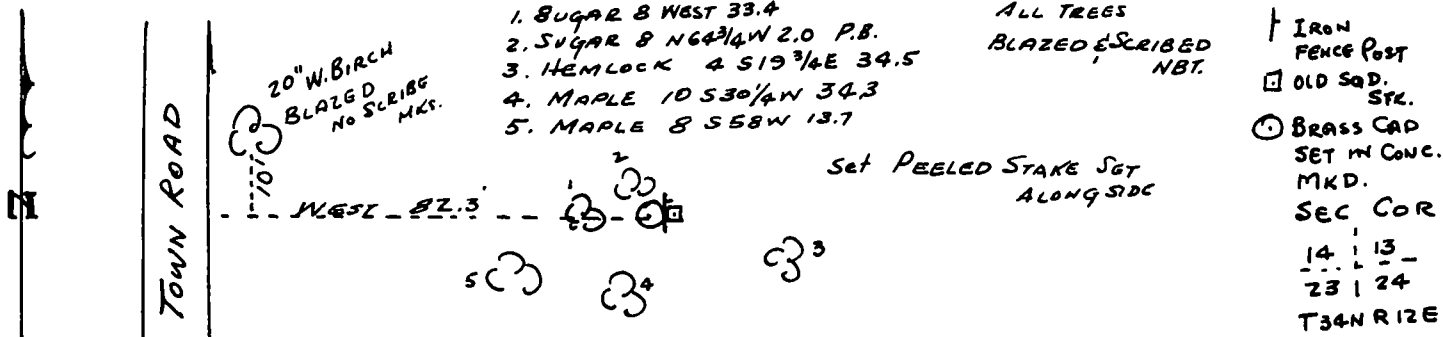
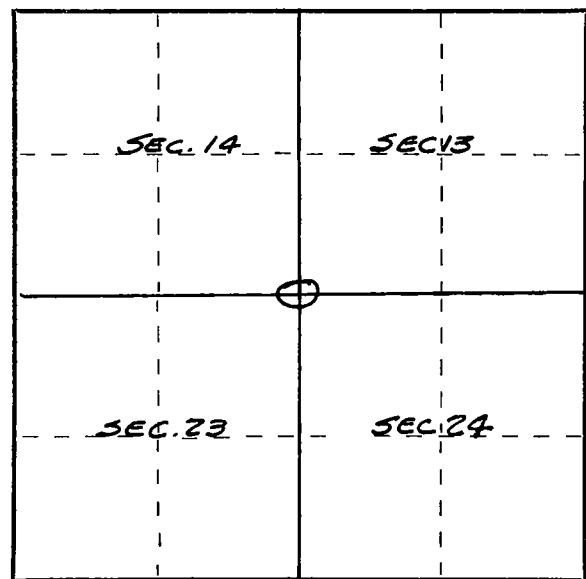
FOUND OLD SQUARED STAKE WIRED TO STEEL FENCE POST.  
FOUND TREES PREVIOUSLY BLAZED (PB ON SKETCH.)



Resident witnesses:

C. GRAYITTER

Description of monument and accessories I established to perpetuate the original location of this corner.



Dated at ELCHO, Wis., this 13 day of JUNE, 1968

Signature Robert J. Poss Title REG. LAND SURVEYOR Registration No. 3-1  
(County Surveyor, Registered Land Surveyor, or other duly authorized official)

Office of Register of Deeds, County of \_\_\_\_\_, I hereby certify that the within instrument was filed in this office for record on the \_\_\_\_\_ day of \_\_\_\_\_, 19\_\_\_\_ at \_\_\_\_\_ o'clock \_\_\_\_\_ M.

(Register of Deeds)

By \_\_\_\_\_ Deputy

○ = Corner monument restored.

FORM 985 H. C. MILLER CO., MILWAUKEE