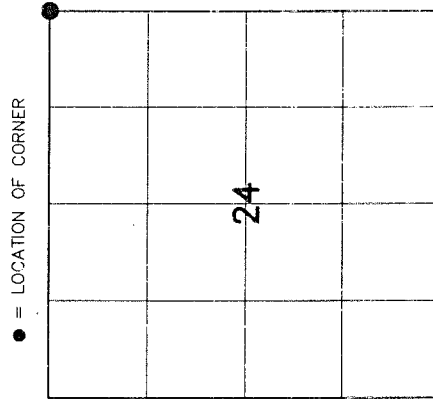


4341213 0000 2017
U.S. PUBLIC LAND SURVEY MONUMENT RECORD

HISTORY OF ORIGINAL CORNER ESTABLISHMENT AND SUBSEQUENT RESTORATION AND DESCRIPTION OF ANY RECORD, MONUMENT OCCUPATIONAL, TESTIMONIAL OR OTHER EVIDENCE CONSIDERED:

THE ORIGINAL CORNER WAS SET BY ALFRED MILLARD IN 1857 WITH THE ORIGINAL BEARING TREES OF:
 HEMLOCK 12" N14E 23 LINKS
 HEMLOCK 12" N85W 18 LINKS
 HEMLOCK 14" S40W 34 LINKS
 HEMLOCK 12 S70E 52 LINKS

1970--HALLISY FOUND A SQUARED STAKE WITH A 1" IRON PIPE, HE SET THE 2" PIPE WITH BRASS CAP WITH ADDITIONAL BEARING TREES OF N1E 15.25', S19E 32.92'.
 2016--I FOUND THE 2" PIPE WITH THE BRASS CAP AND SET TIES AS SHOWN



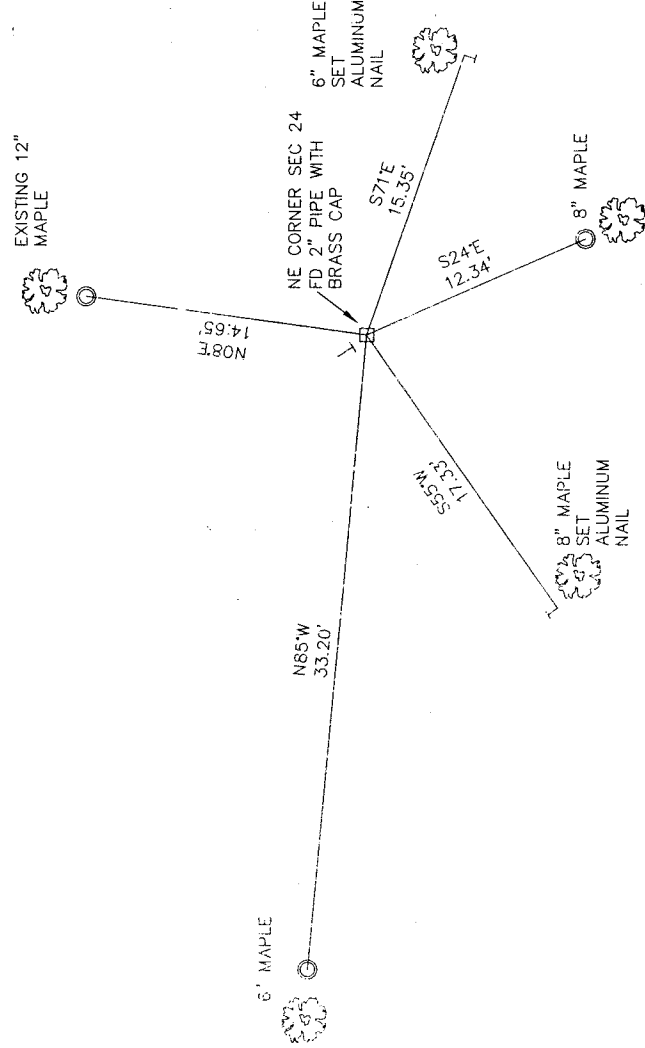
SECTION 24
 TOWNSHIP 34 NORTH, RANGE 12 EAST
 TOWN OF AINSWORTH
LANGLADE COUNTY, WISCONSIN

CORNER WAS: (CHECK ALL THAT APPLY)

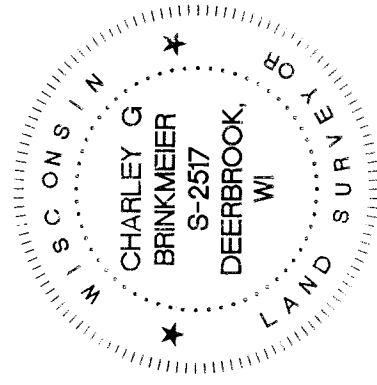
- RESTORED THROUGH ACCEPTANCE OF AN OBLITERATED EVIDENCE LOCATION
- RESTORED THROUGH ACCEPTANCE OF A FOUND PERPETUATED LOCATION
- CONSIDERED A LOST CORNER AND REESTABLISHED THROUGH LOST CORNER PROPORTIONATE METHODS (INCLUDE A PLAN VIEW DRAWING SHOWING DISTANCES AND DIRECTIONS TO OTHER PUBLIC LAND SURVEY CORNERS USED FOR PROPORTIONING AND DETERMINING THE CORNER LOCATION)
- RESTORED OR REESTABLISHED IN A LOCATION THAT DIFFERS FROM A PREVIOUS RESTORATION OR RE-ESTABLISHMENT (INCLUDE A PLAN VIEW DRAWING AND INDICATE WHAT WAS SET AND/OR FOUND)
- CHECK IF THERE IS ADDITIONAL INFORMATION ON BACK

DESCRIBE THE MONUMENT AND ACCESSORIES USED TO PERPETUATE THE LOCATION OF THE CORNER. (INCLUDE A PLAN VIEW DRAWING AND INDICATE WHAT WAS SET AND/OR FOUND) ALSO INCLUDE FOUR TIES TO THE SECTION CORNER AND DESCRIPTION OF THE TIES.

- SET 3/4" X 30" IRON REBAR AT ALL TIE LOCATIONS
- BEARINGS REFERENCED TO MAGNETIC
- T - WHITE VINYL POST SET



LCCS: N 443154.51
 E 678933.31
 FCCS: N 516677.91
 E 830215.74



INDEX NO. _____

CHARLEY G. BRINKMEIER

(Type or print name) CERTIFY THAT THE CORNER LOCATION SHOWN ON THIS RECORD WAS DETERMINED BY ME OR UNDER MY DIRECTION AND CONTROL AND THAT THIS U.S. PUBLIC LAND SURVEY MONUMENT RECORD IS CORRECT AND COMPLETE TO THE BEST OF MY KNOWLEDGE AND BELIEF.

SIGNATURE Charley G. Brinkmeier DATE 1-17-17