

4391212 2000 2017

U.S. PUBLIC LAND SURVEY MONUMENT RECORD

HISTORY OF ORIGINAL CORNER ESTABLISHMENT AND SUBSEQUENT RESTORATION AND DESCRIPTION OF ANY RECORD, MONUMENT OCCUPATIONAL, TESTIMONIAL OR OTHER EVIDENCE CONSIDERED:

THE ORIGINAL CORNER WAS SET BY ALFRED MILLARD IN 1857 WITH THE ORIGINAL BEARING TREES OF:

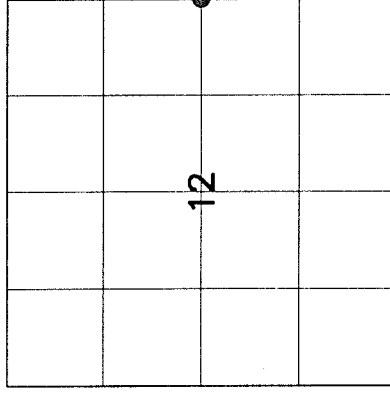
MAPLE 10" S30W 10 LINKS

HEMLOCK 12" N37E 17 LINKS

1981-KELLY FOUND A 4X4 WOOD POST & A 1" IRON PIPE, HE REPLACED THE PIPE WITH A 2" PIPE WITH BRASS CAP AND ADDITIONAL BEARING TREES OF S26E 23.15, S24W 18.70, S85W 17.30

2016-I FOUND THE 2" PIPE WITH THE BRASS CAP AND SET TIES AS SHOWN

● = LOCATION OF CORNER



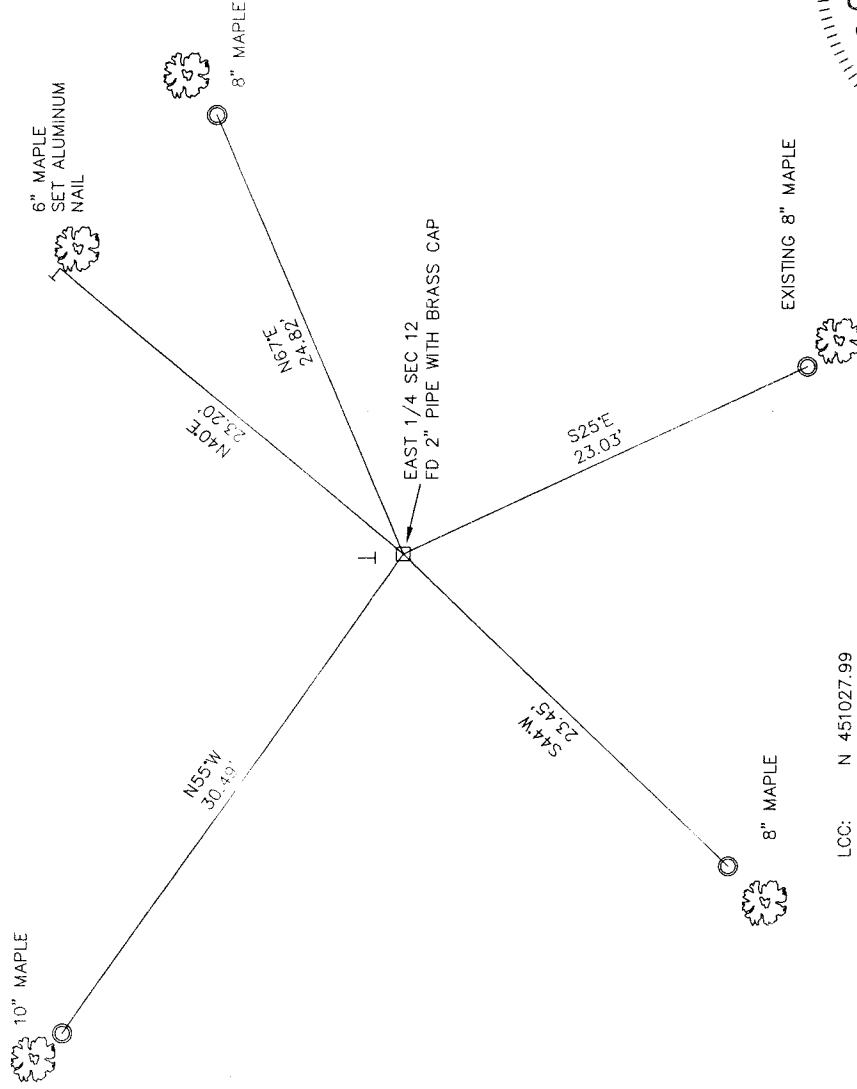
SECTION 12
 TOWNSHIP 34 NORTH, RANGE 12 EAST
 TOWN OF AINSWORTH
LANGLADE COUNTY, WISCONSIN

CORNER WAS: (CHECK ALL THAT APPLY)

- RESTORED THROUGH ACCEPTANCE OF AN OBLITERATED EVIDENCE LOCATION
- RESTORED THROUGH ACCEPTANCE OF A FOUND PERPETUATED LOCATION
- CONSIDERED A LOST CORNER AND REESTABLISHED THROUGH LOST CORNER PROPORTIONATE METHODS (INCLUDE A PLAN VIEW DRAWING SHOWING DISTANCES AND DIRECTIONS TO OTHER PUBLIC LAND SURVEY CORNERS USED FOR PROPORTIONING AND DETERMINING THE CORNER LOCATION)
- RESTORED OR REESTABLISHED IN A LOCATION THAT DIFFERS FROM A PREVIOUS RESTORATION OR RE-ESTABLISHMENT (INCLUDE A PLAN VIEW DRAWING AND INDICATE WHAT WAS SET AND/OR FOUND)
- CHECK IF THERE IS ADDITIONAL INFORMATION ON BACK

DESCRIBE THE MONUMENT AND ACCESSORIES USED TO PERPETUATE THE LOCATION OF THE CORNER. (INCLUDE A PLAN VIEW DRAWING AND INDICATE WHAT WAS SET AND/OR FOUND) ALSO INCLUDE FOUR TIES TO THE SECTION CORNER AND DESCRIPTION OF THE TIES.

- ☉ SET 3/4"X 30" IRON REBAR AT ALL TIE LOCATIONS
- BEARINGS REFERENCED TO MAGNETIC
- T - WHITE VINYL POST SET



LCC: N 451027.99
 E 679186.21
 FCCS: N 524550.02
 E 830507.75



INDEX NO. _____

CHARLEY G. BRINKMEIER

(Type or print name) CERTIFY THAT THE CORNER LOCATION SHOWN ON THIS RECORD WAS DETERMINED BY ME OR UNDER MY DIRECTION AND CONTROL AND THAT THIS U.S. PUBLIC LAND SURVEY MONUMENT RECORD IS CORRECT AND COMPLETE TO THE BEST OF MY KNOWLEDGE AND BELIEF.

Charley G. Brinkmeier

1-17-17

SIGNATURE

DATE