

4341209 0020

# U.S. PUBLIC LAND SURVEY MONUMENT RECORD

(Prepared and as required by S. A-E 7.08 WI Administrative Code)

The SOUTH 1/4 corner of Section 9, T. 34 N., R. 12 E., Langlade County, WI  
Corner was (check all that apply)

- Restored through acceptance of an obliterated evidence location.
- Restored through acceptance of a found perpetuated location.
- Determined to be lost and re-established through proportionate methods. (show bearings and distances to PLSS corners used for proportioning.)
- Restored/recovered/re-established in a location that differs from a previously established position. (Show difference in plan view below.)
- Check here if additional information is shown on the reverse side of this form.

**Describe record evidence, recovered physical evidence, occupational evidence, testimonial evidence, and all other evidence considered in the recovery/restoration of the corner.**

1865- Govt Surveyor J.L. Nowlin set corner in original survey. BTs: 10" Cedar N36°W, 8 links; 14" Birch, S4°E, 7 links. 1913-Malcom Hutchinson (FB 16 ) found both original BTs (one dead) set one new BT: 24" Pine , S20 3/4°E, 40 links.

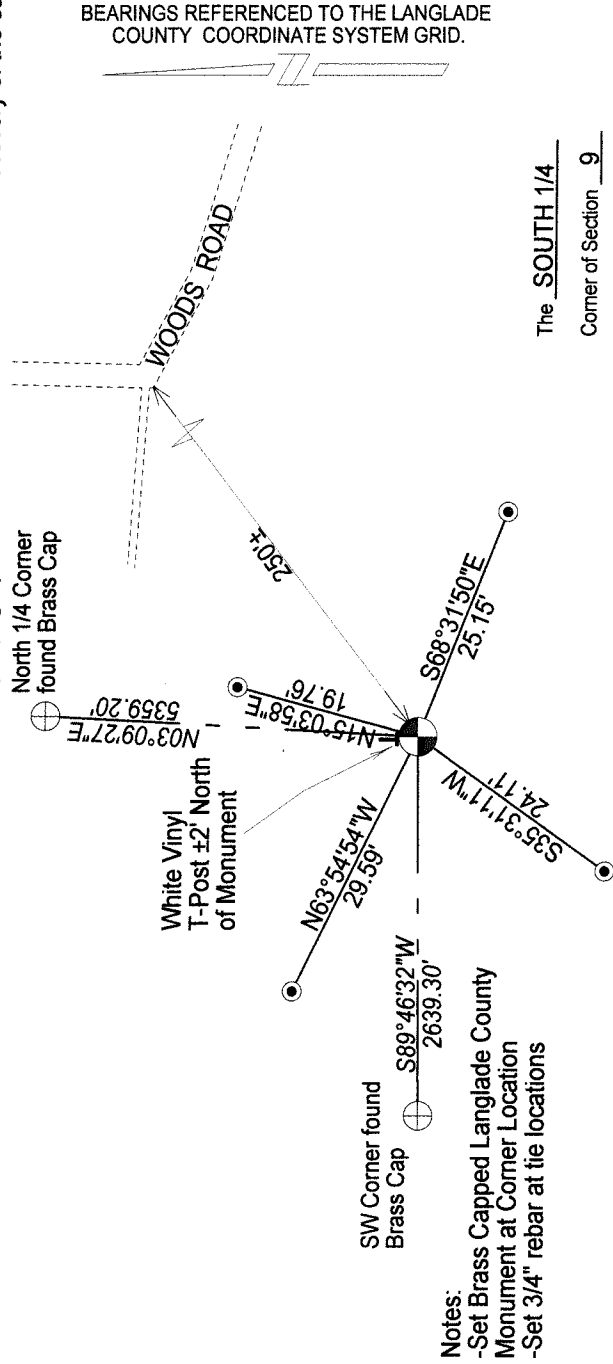
1932- GLO Resurvey- Surveyor Borth found an, " old scribed Cedar stake badly burnt", the original Cedar stump, "face burnt" 10", N36°W, (no distance given), the original Birch gone, recorded White Pine 24" S20 3/4°E 26.4", "ok shows marks". "Set and scribe new cedar stake with stone mound." Set and marked two new BTs: 10" Cedar stump S13°W, 17.6' and a 5" Aspen S68 1/2°W, 18.6' and one new reference object, a grey stone (no size given) with a cross like mark on the stone, S68 1/2°W, 18.6 feet.

2010-After an extensive search for the South 1/4 corner in the fall and winter of 2009, I found the area had been recently clear-cut logged and the surface area disturbed by logging and grading. I found no evidence of the corner. I used Hutchinson's 1913 distance from the North 1/4 corner (81.20 chains) and Borth's 1932 distance from the Southwest corner (2639.3') and calculated a new location for the South 1/4 corner location.

### Physical description of the monument set:

In 2010, I set a 2.375" X 30" iron pipe with 3.25" brass cap as the corner, a white vinyl post 2'± North, and four new witness ties as shown below.

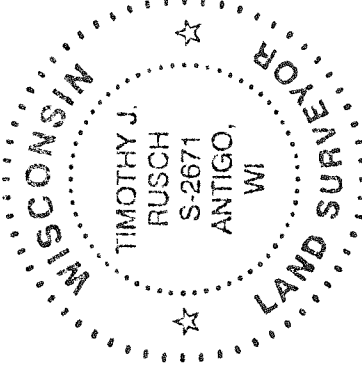
Describe the accessories used to perpetuate the location of the corner. Include a plan view drawing and indicate accessories found/set. Describe measuring point on bearing trees. Show any topographic features that would aid in future recovery of the corner.



The SOUTH 1/4  
Corner of Section 9  
T. 34 N., R. 12 E.  
Langlade County, WI

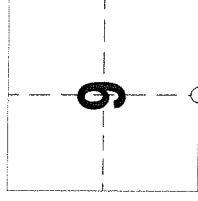
Not drawn to scale

SURVEYOR'S SEAL



I, Timothy J. Rusch certify that the corner location shown on this record was determined by me or under my direction and control and that this U.S. Public Land Survey Monument Record is correct and complete to the best of my knowledge and belief.

Timothy J. Rusch 12-21-2010  
Signature Date



○ = Location of corner

INDEX No. J-11 (34-12)