

4 3412 05 20 00

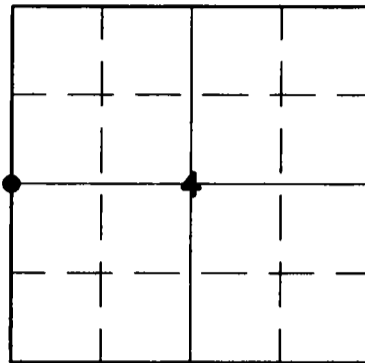
# U.S. PUBLIC LAND SURVEY MONUMENT RECORD

### HISTORY OF ORIGINAL CORNER ESTABLISHMENT AND SUBSEQUENT RESTORATION AND DESCRIPTION OF ANY RECORD, MONUMENT OCCUPATIONAL, TESTIMONIAL OR OTHER EVIDENCE CONSIDERED:

THE ORIGINAL CORNER WAS SET BY J.L. NOLING IN 1859. THE ORIGINAL BEARING TREES WERE:  
8" TAMARACK S36°W 5 LINKS  
10" TAMARACK N5E, 10 LINKS  
NO EVIDENCE OF THE ORIGINAL TREES WAS FOUND.

IN 1930 C.W. BORTH DID A RESURVEY OF MANY OF THE SECTION IN T34N R12E, WHERE HE HAD SET A 4X4 CEDAR POST. WE HAD RECOVERED SOME OF THESE POST AT OTHER CORNERS BUT NONE AT THIS LOCATION. WE PROPORTIONED IN THIS CORNER BASED ON BORTH'S DISTANCE FROM THE SW TO THE NW CORNERS OF SECTION 4 AND SET A 2" X 30" BRASS CAP PIPE.

● = LOCATION OF CORNER



SECTION 4

TOWNSHIP 34 NORTH, RANGE 12 EAST

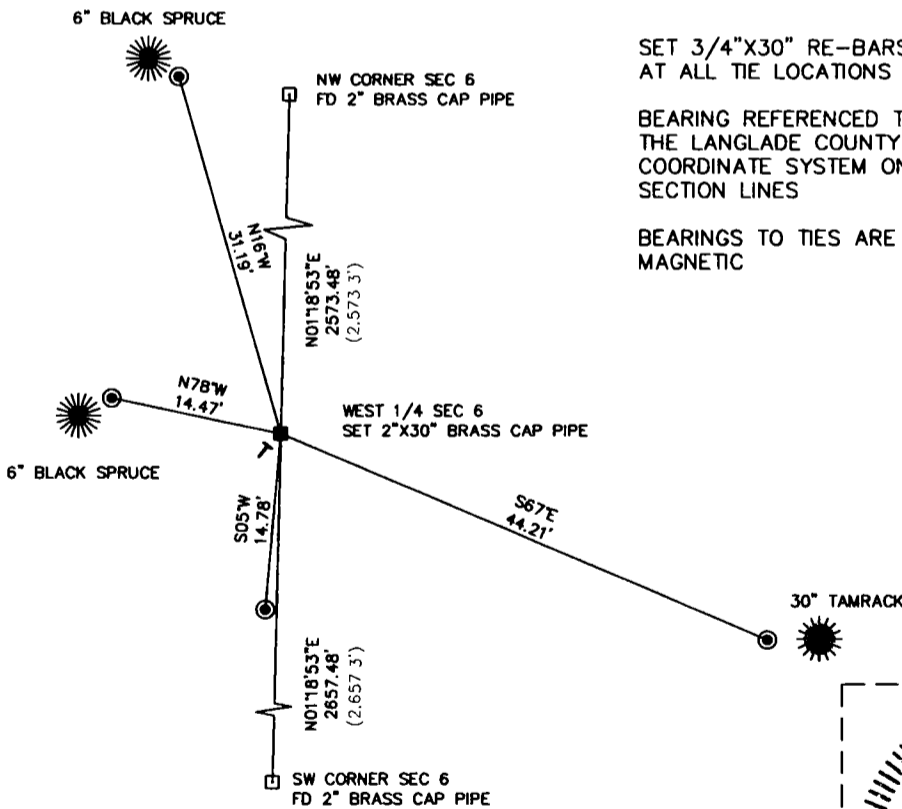
TOWN OF AINSWORTH

LANGLADE COUNTY, WISCONSIN

CORNER WAS: (CHECK ALL THAT APPLY)

- RESTORED THROUGH ACCEPTANCE OF AN OBLITERATED EVIDENCE LOCATION
- RESTORED THROUGH ACCEPTANCE OF A FOUND PERPETUATED LOCATION
- CONSIDERED A LOST CORNER AND REESTABLISHED THROUGH LOST CORNER PROPORTIONATE METHODS (INCLUDE A PLAN VIEW DRAWING SHOWING DISTANCES AND DIRECTIONS TO OTHER PUBLIC LAND SURVEY CORNERS USED FOR PROPORTIONING AND DETERMINING THE CORNER LOCATION)
- RESTORED OR REESTABLISHED IN A LOCATION THAT DIFFERS FROM A PREVIOUS RESTORATION OR REESTABLISHMENT (INCLUDE A PLAN VIEW DRAWING AND INDICATE WHAT WAS SET AND/OR FOUND)
- CHECK IF THERE IS ADDITIONAL INFORMATION ON BACK

DESCRIBE THE MONUMENT AND ACCESSORIES USED TO PERPETUATE THE LOCATION OF THE CORNER. (INCLUDE A PLAN VIEW DRAWING AND INDICATE WHAT WAS SET AND/OR FOUND) ALSO INCLUDE FOUR TIES TO THE SECTION CORNER AND DESCRIPTION OF THE TIES.

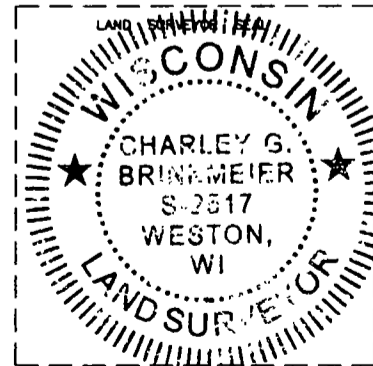


CHARLEY G. BRINKMEIER

(type or print name) CERTIFY THAT THE CORNER LOCATION SHOWN ON THIS RECORD WAS DETERMINED BY ME OR UNDER MY DIRECTION AND CONTROL AND THAT THIS U.S. PUBLIC LAND SURVEY MONUMENT RECORD IS CORRECT AND COMPLETE TO THE BEST OF MY KNOWLEDGE AND BELIEF.

*Charley G. Brinkmeier*  
SIGNATURE

12-29-08  
DATE



C9 34-12  
INDEX NO.