

CERTIFIED LAND CORNER RESTORATION

Index No. B-24

State of Wisconsin } ss.
County of LANGLADE

I WILLIAM F. KELLY, do hereby certify that on the 26th day of JULY, 1981, I found evidence of the NE 1/16 corner of SECTION 1 Township 33, North, Range 12, Fourth Principal Meridian, as described hereon; and that from this evidence I established a new monument and accessories as described hereon to perpetuate the original location of this corner.

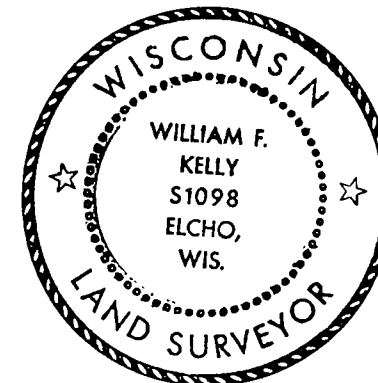
Resident witnesses:

.....
.....
.....

History of original corner establishment:

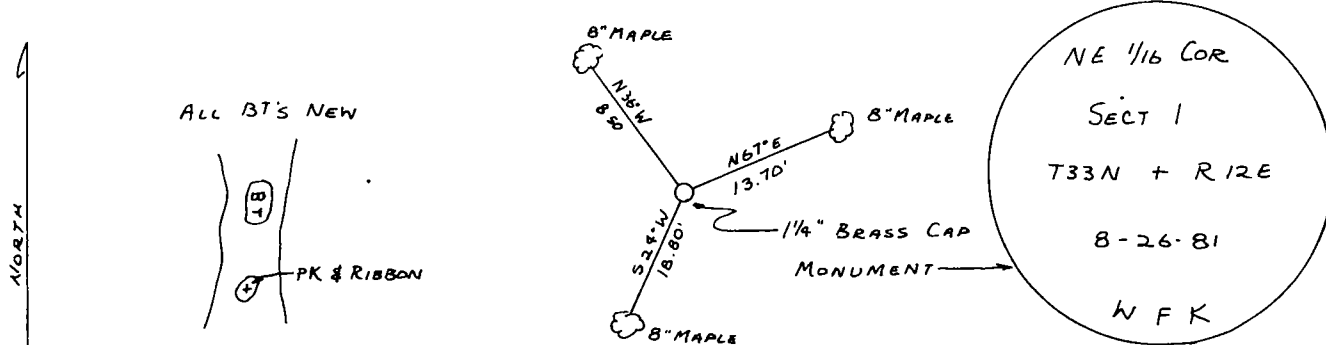
Description of corner evidence found:

LOCATED FROM PIPE SET BY P. HANSEN ON PRANCY'S SURVEY

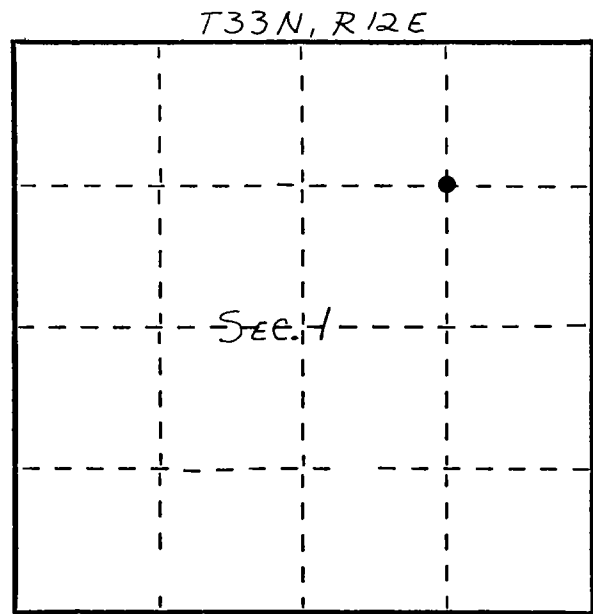


William F. Kelly

SET 1 1/4" x 42" BLACK IRON PIPE WITH BRASS CAP MONUMENT.
Description of monument and accessories I established to perpetuate the original location of this corner.



FORM 985 N. C. MILLER CO., MILWAUKEE



○ = Corner monument restored.

Dated at ELCHO, Wis., this 26th day of JULY, 1981

Signature William F. Kelly Title COUNTY SURVEYOR Registration No. 1098
(County Surveyor, Registered Land Surveyor, or other duly authorized official)

Office of Register of Deeds, County of _____, I hereby certify that the within instrument was filed in this office for record on the _____ day of _____, 19____ at _____ o'clock _____ M.

.....
(Register of Deeds)

By _____ Deputy