

CERTIFIED LAND CORNER RESTORATION

Index No. E-25

State of Wisconsin }
County of LANGLADE } ss.

I WILLIAM F. KELLY, do hereby certify that on the 30th day of Nov., 1981, I found evidence of the NE corner of SECT. 12 Township 34, North, Range 12E, Fourth Principal Meridian, as described hereon; and that from this evidence I established a new monument and accessories as described hereon to perpetuate the original location of this corner.

Resident witnesses:

.....
.....
.....

History of original corner establishment:

ORIGINAL CORNER ESTABLISHED BY
JAMES L. NOWLIN IN MAY-JUNE, 1865

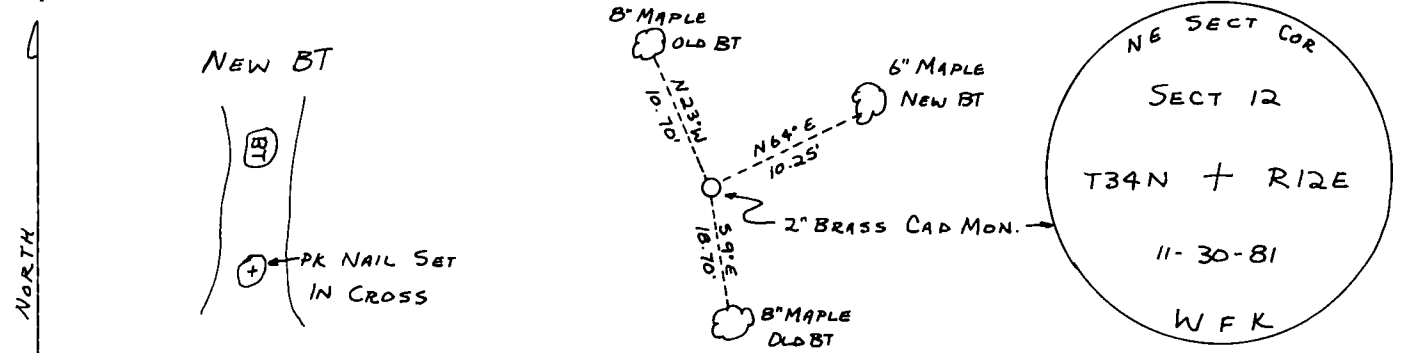
CORNER MAINTAINED BY
OWENS - ILLINOIS

Description of corner evidence found:

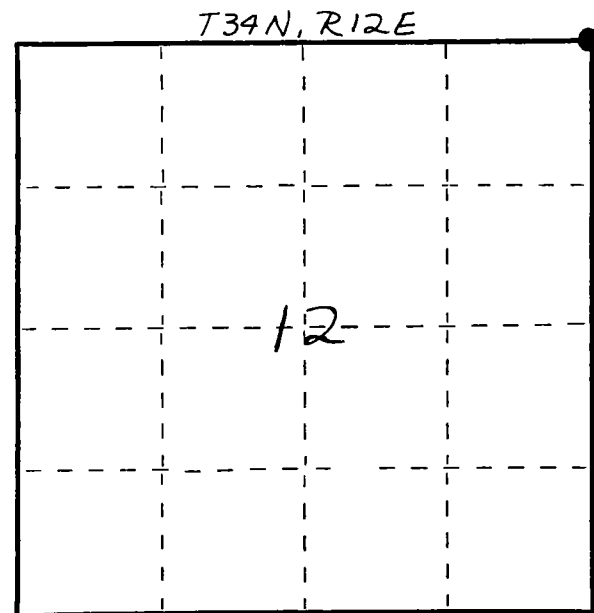
4" x 4" WOOD POST & 1" IRON PIPE,
FOUND IN PLACE. RESET WOOD
POST. REPLACED IRON PIPE WITH
A 2" x 42" BLACK IRON PIPE
WITH BRASS CAP MONUMENT.
2 OLD BT'S, SCRIBED 1 NEW BT.



Description of monument and accessories I established to perpetuate the original location of this corner.



FORM 985 H. C. MILLER CO. MILWAUKEE



○ = Corner monument restored.

Dated at ELCHO, Wis., this 30th day of Nov., 1981.

Signature William F. Kelly Title COUNTY SURVEYOR Registration No. 1098
(County Surveyor, Registered Land Surveyor, or other duly authorized official)

Office of Register of Deeds, County of, I hereby certify that the within instrument was filed in this office for record on the day of, 19..... at o'clock M.

.....
(Register of Deeds)
By..... Deputy