

CERTIFIED LAND CORNER RESTORATION

34-11

Index No. λ-24

State of Wisconsin }  
County of Lanlade } ss.

History of original corner establishment:

Corner set in the 1950's by Genisot Eng. Plat of Perch Lake

I Raymond J. Hallisy, do hereby certify that on the 4th day of May, 1969, I found evidence of the E. Center 1/16 corner of Section 36 Township 34, North, Range 11E, Fourth, Principal Meridian, as described hereon; and that from this evidence I established a new monument and accessories as described hereon to perpetuate the original location of this corner.

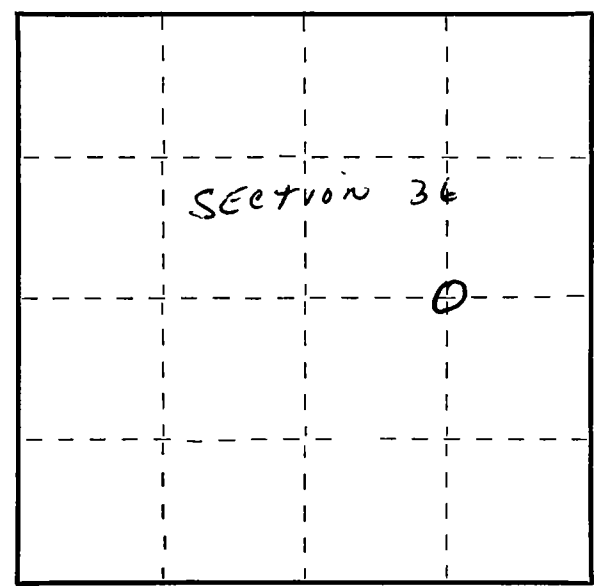
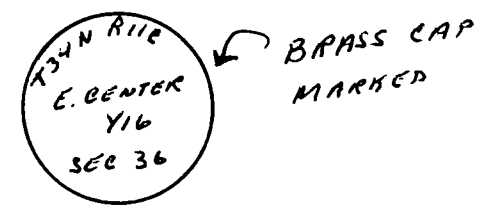
Description of corner evidence found:

Squared stake standing. B.T.'s  
Spruce 6" N83E 23Ft. 9 inches (Dead)  
Spruce 7" S88W 12Ft. 10 inches

Resident witnesses:  
.....  
.....  
.....

Description of monument and accessories I established to perpetuate the original location of this corner.

Set 2" pipe with brass cap and rock mound.  
B.T. to corner  
White Pine 10" N35W 25Ft. 8 inches  
B.T. faced at base of tree and scribed BT



○ = Corner monument restored.

Dated at Antigo, Wis., this 4th day of May, 1969

Signature Raymond J. Hallisy Title Reg. Land Surveyor Registration No. S-685  
(County Surveyor, Registered Land Surveyor, or other duly authorized official)

Office of Register of Deeds, County of \_\_\_\_\_, I hereby certify that the within instrument was filed in this office for record on the \_\_\_\_\_ day of \_\_\_\_\_, 19\_\_\_\_ at \_\_\_\_\_ o'clock \_\_\_\_\_ M.

\_\_\_\_\_  
(Register of Deeds)

By \_\_\_\_\_ Deputy

FORM 985 R. C. MILLER CO., MILWAUKEE