

CERTIFIED LAND CORNER RESTORATION

Index No. X-21

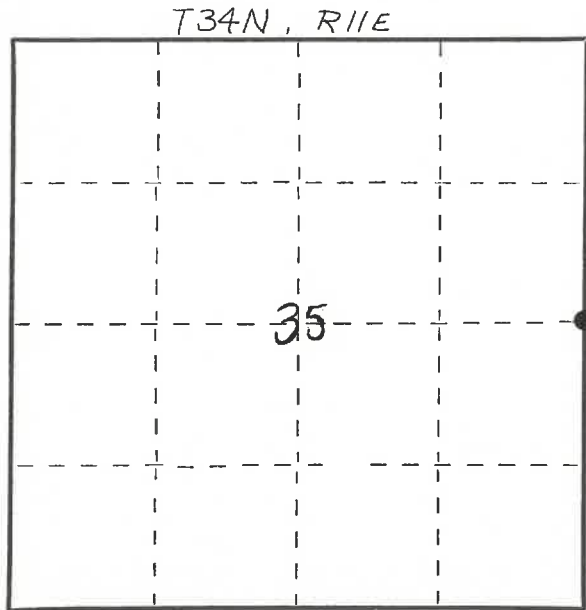
State of Wisconsin }
County of LANGLADE } ss.

I WILLIAM F. KELLY, do hereby certify that on the 9th day of APRIL, 19 82, I found evidence of the E. 1/4 corner of SECT. 35 Township 34, North, Range 11 EAST, Fourth Principal Meridian, as described hereon; and that from this evidence I established a new monument and accessories as described hereon to perpetuate the original location of this corner.

Resident witnesses:

.....
.....
.....

FORM 985 W. C. MILLER CO., MILWAUKEE



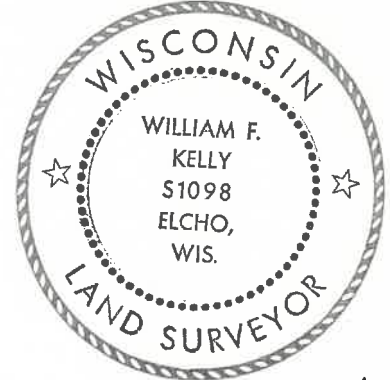
○ = Corner monument restored.

History of original corner establishment:

ORIGINAL CORNER ESTABLISHED BY
WILLIAM E. DAUGHERTY IN JULY, 1859.

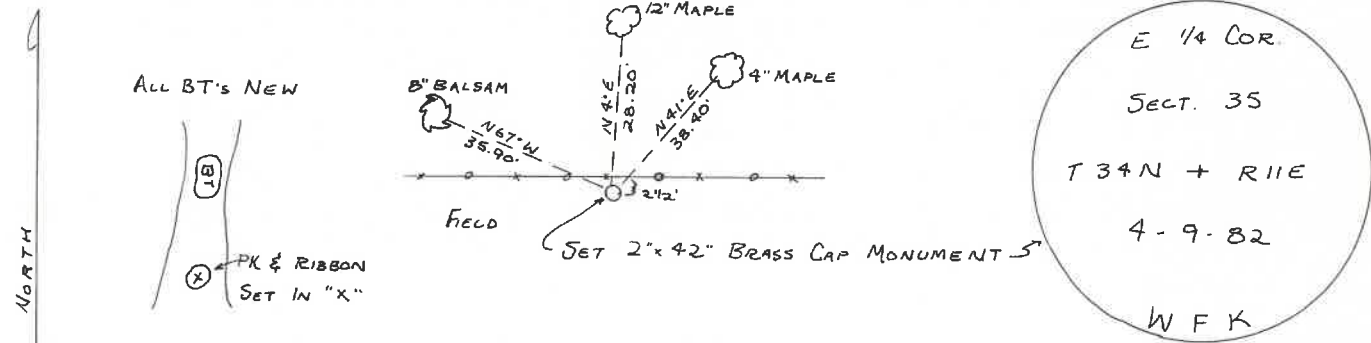
Description of corner evidence found:

Corner Established at Mid Point
between NE Corner and SE Corner
sect 35 T34N R11E



William F. Kelly

Description of monument and accessories I established to perpetuate the original location of this corner.



Dated at ELCHO, Wis., this 9th day of APRIL, 19 82.

Signature William F. Kelly Title COUNTY SURVEYOR Registration No. 1098
(County Surveyor, Registered Land Surveyor, or other duly authorized official)

Office of Register of Deeds, County of _____, I hereby certify that the within instrument was filed in this office for record on the _____ day of _____, 19 _____ at _____ o'clock _____ M.

.....
(Register of Deeds)

By _____ Deputy

PLSS field condition report

Date: 4-21-20 Time of day: 10:00 am

By: Luke Williams

Section 35 Town 34 Range 11
(circle corner location on diagram)

Does the monument appear to be tilted, smashed, uprooted, covered or otherwise damaged by the windstorm?

YES NO A 10" aspen was uprooted at right at

the monument location. This has caused the monument to tilt to the East.

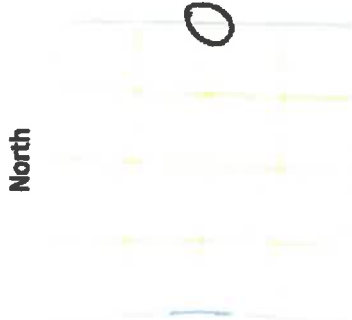
Are any bearing trees broken, uprooted, missing or otherwise damaged by the windstorm? YES NO

TAKE PICTURES

For the first four pictures, do them in this order:

Looking north, looking east, looking south, looking west and, by standing about 6 feet behind the monument, include the monument in each picture.

Then take a picture of the top of the monument, close enough to be able to read what is stamped on the cap. Make sure all pictures are in focus.



434135 2000

X 21
34-11