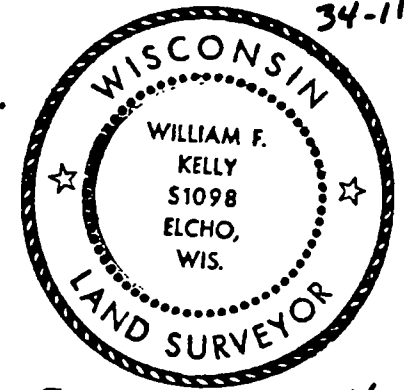


CERTIFIED LAND CORNER RESTORATION

Index No. 70-19
34-11

State of Wisconsin }
County of LANGLADE } ss.

History of original corner establishment:
CORNER SET ON RESURVEY OF TOWNSHIP IN 1936.

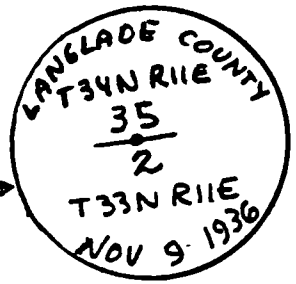
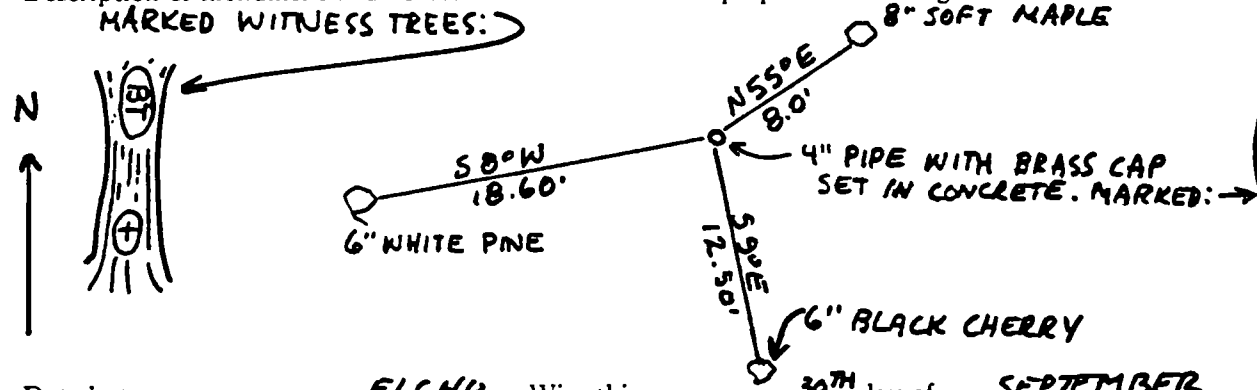
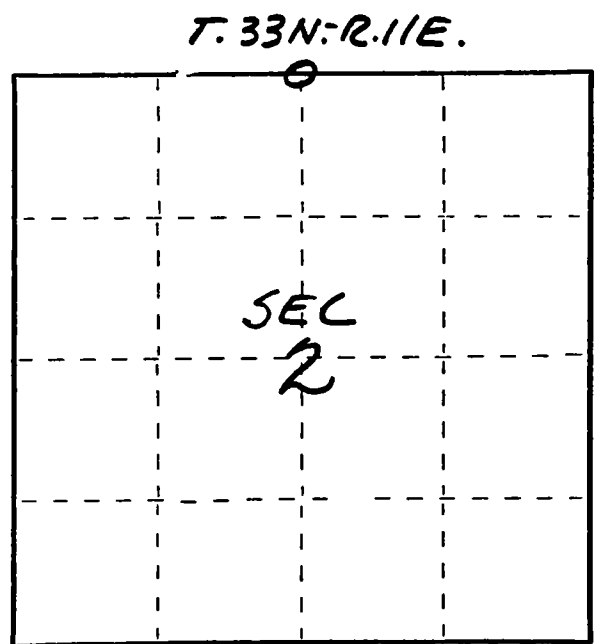


I WILLIAM F. KELLY, do hereby certify that on the 30TH day of SEPTEMBER, 1977, I found evidence of the N 1/4 corner of SECTION 35 Township 34 & 33, North, Range 11 E, Fourth Principal Meridian, as described hereon; and that from this evidence I established a new monument and accessories as described hereon to perpetuate the original location of this corner.

Description of corner evidence found:
LOCATED THE N 1/4 CORNER SECTION 2 T.33N. R.11E. William F. Kelly
9-30-77

Resident witnesses:
.....
.....
.....

Description of monument and accessories I established to perpetuate the original location of this corner.
MARKED WITNESS TREES:



Dated at ELCHO, Wis., this 30TH day of SEPTEMBER, 1977

Signature William F. Kelly Title REGISTERED LAND SURVEYOR Registration No. S1098
(County Surveyor, Registered Land Surveyor, or other duly authorized official)

Office of Register of Deeds, County of, I hereby certify that the within instrument was filed in this office for record on the day of, 19..... at o'clock M.

.....
(Register of Deeds)

By..... Deputy

○ = Corner monument restored.

FORM 983 M. C. MILLER CO., MILWAUKEE