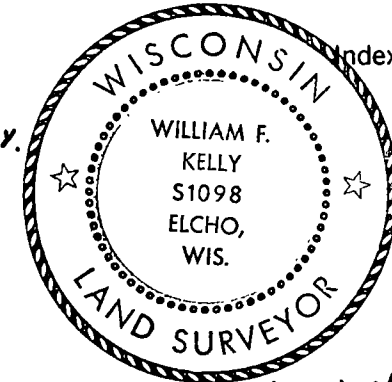


CERTIFIED LAND CORNER RESTORATION

Index No. A-T
4-21



William F. Kelly

State of Wisconsin }
County of LANGLADE } ss.

History of original corner establishment: '
SECTION CORNER SET IN 1930'S ON RESURVEY.

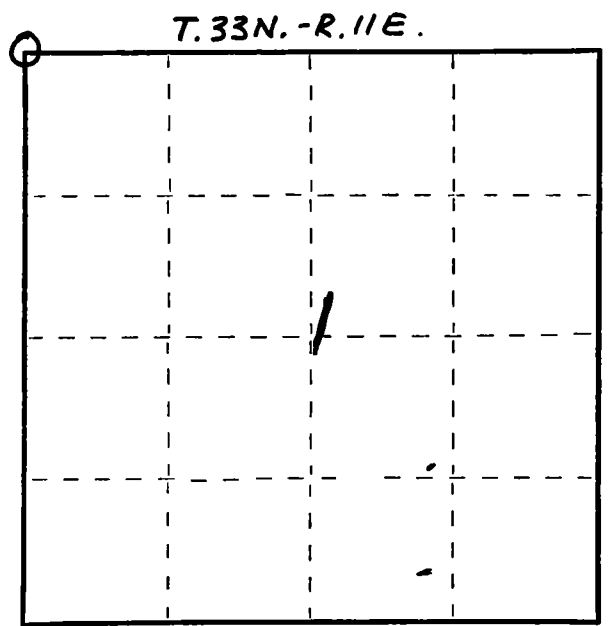
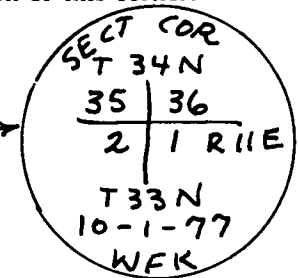
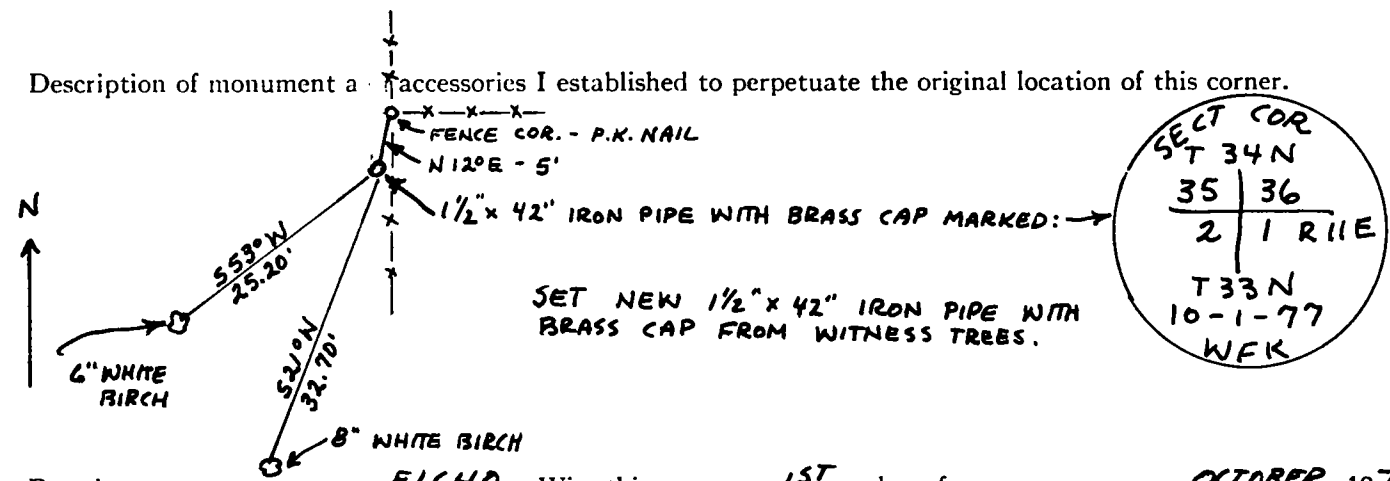
I, WILLIAM F. KELLY, do hereby certify that on the 1ST day of OCTOBER, 1977, I found evidence of the SECTION corner of SECTIONS 35, 36, 2 & 1 Township 34 & 33, North, Range 11E, Fourth Principal Meridian, as described hereon; and that from this evidence I established a new monument and accessories as described hereon to perpetuate the original location of this corner.

Description of corner evidence found:
LOCATED SECTION CORNER MONUMENT. MONUMENT HAD BEEN DAMAGED - PART OF BRASS CAP BROKEN OFF. MONUMENT WAS TILTED OFF AT AN ANGLE.

Resident witnesses:

.....
.....
.....

Description of monument and accessories I established to perpetuate the original location of this corner.



○ = Corner monument restored.

Dated at ELCHO, Wis., this 1ST day of OCTOBER, 1977.

Signature William F. Kelly Title REGISTERED LAND SURVEYOR Registration No. 51098
(County Surveyor, Registered Land Surveyor, or other duly authorized official)

Office of Register of Deeds, County of, I hereby certify that the within instrument was filed in this office for record on the day of, 19..... at o'clock M.

.....
(Register of Deeds)

By Deputy

FORM 985 H. C. MILLER CO., MILWAUKEE

CERTIFIED LAND CORNER RESTORATION

Index No. **A-2**

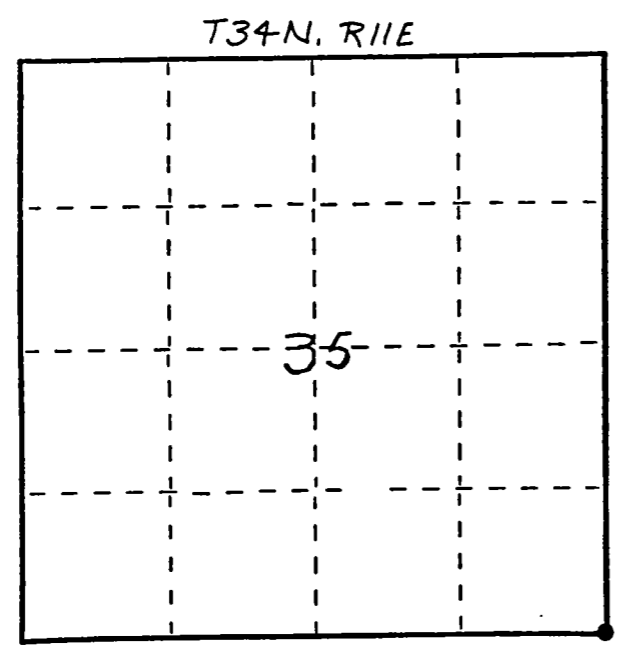
33-11

State of Wisconsin }
 County of LANGLADE } ss.

I WILLIAM F. KELLY, do hereby certify that on the 7th day of APRIL, 1982, I found evidence of the SE corner of SECT. 35 Township 34, North, Range 11 EAST, Fourth Principal Meridian, as described hereon; and that from this evidence I established a new monument and accessories as described hereon to perpetuate the original location of this corner.

Resident witnesses:

FORM 985 W. C. MILLER CO., MILWAUKEE



○ = Corner monument restored.

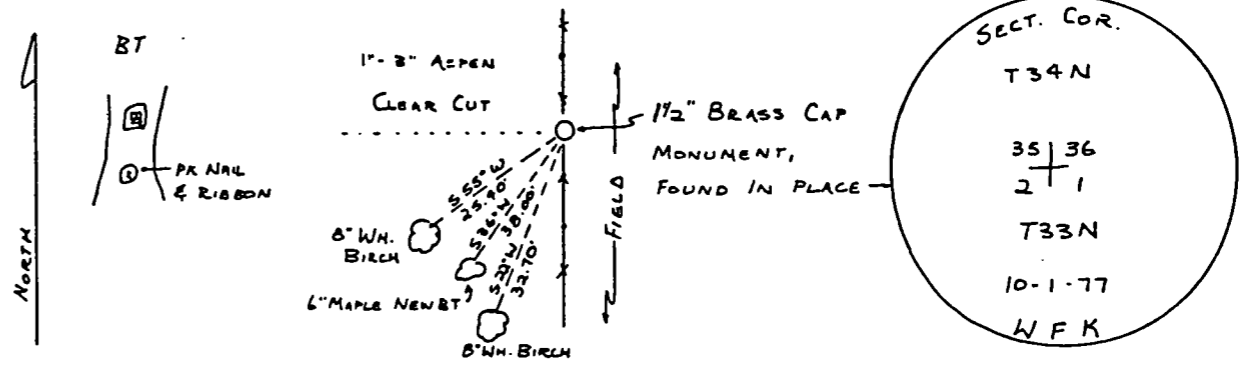
History of original corner establishment:
ORIGINAL CORNER ESTABLISHED BY WILLIAM DAUGHERTY IN JULY, 1859.

Description of corner evidence found:
1 1/2" BRASS CAP MONUMENT,
FOUND IN PLACE, WITH 2
EXISTING BT'S. MARKED 1 NEW BT.



William F. Kelly

Description of monument and accessories I established to perpetuate the original location of this corner.



Dated at ELCHO, Wis., this 7th day of APRIL, 1982

Signature William F. Kelly Title COUNTY SURVEYOR Registration No. 1098
 (County Surveyor, Registered Land Surveyor, or other duly authorized official)

Office of Register of Deeds, County of....., I hereby certify that the within instrument was filed in this office for record on the..... day of....., 19..... at..... o'clock..... M.

.....
 (Register of Deeds)

By..... Deputy