

CERTIFIED LAND CORNER RESTORATION

Index No. X-15

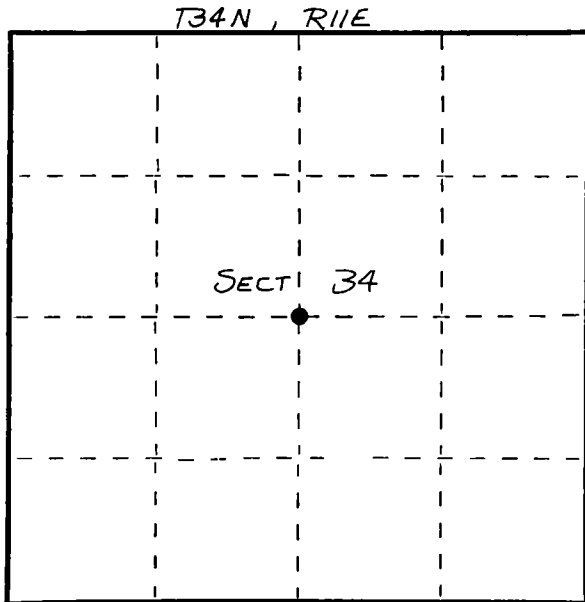
State of Wisconsin } ss.
County of LANGLADE

I WILLIAM F. KELLY, do hereby certify that on the 11th day of MARCH, 1982, I found evidence of the CENTER corner of SECT. 34 Township 34 North, Range 11 EAST, Fourth Principal Meridian, as described hereon; and that from this evidence I established a new monument and accessories as described hereon to perpetuate the original location of this corner.

Resident witnesses:

.....
.....
.....

FORM 985 H. C. MILLER CO., MILWAUKEE



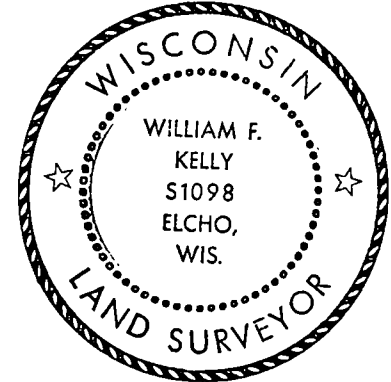
○ = Corner monument restored.

History of original corner establishment:

CORNER NOT SET BY ORIGINAL SURVEY

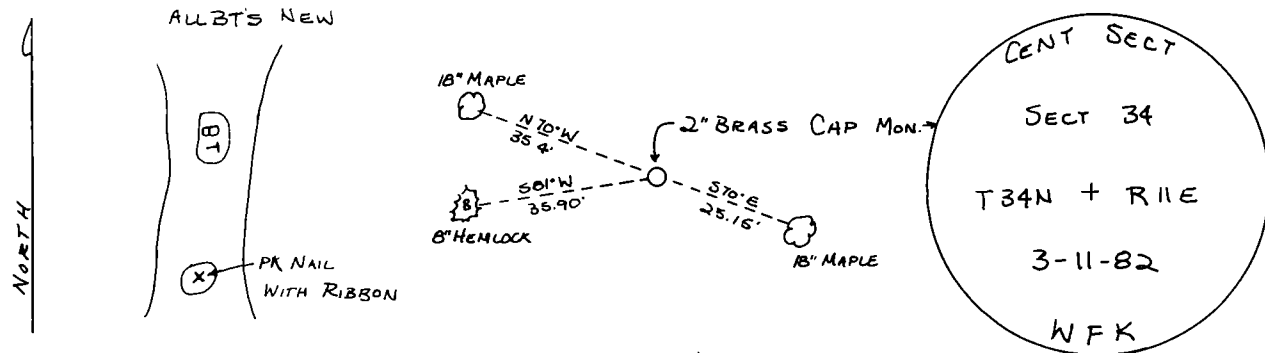
Description of corner evidence found:

CORNER SET AT INTERSECTION OF N-S and E-W 1/4 LINES. SET 2" x 42" BLACK IRON PIPE WITH BRASS CAP MONUMENT. MARKED 3 NEW BT'S.



William F. Kelly

Description of monument and accessories I established to perpetuate the original location of this corner.



Dated at ELCHO, Wis., this 11th day of MARCH, 1982.

Signature: William F. Kelly Title: COUNTY SURVEYOR Registration No. 1098
(County Surveyor, Registered Land Surveyor, or other duly authorized official)

Office of Register of Deeds, County of....., I hereby certify that the within instrument was filed in this office for record on the..... day of....., 19..... at..... o'clock..... M.

(Register of Deeds)

By..... Deputy