

CERTIFIED LAND CORNER RESTORATION

Index No. X16

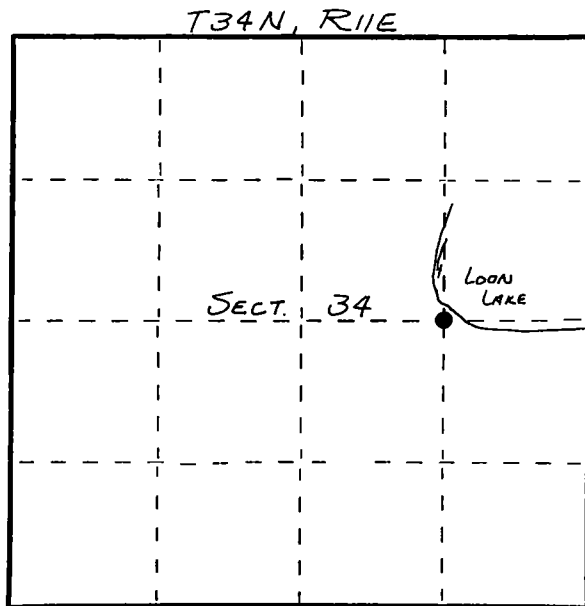
State of Wisconsin }  
County of LANGLADE } ss.

I WILLIAM F. KELLY, do hereby certify that on the 12<sup>th</sup> day of MARCH, 1982, I found evidence of the E. 1/4 corner of DN. E-W 1/4 LINE, SECT. 34 Township 34, North, Range 11 EAST, Fourth Principal Meridian, as described hereon; and that from this evidence I established a new monument and accessories as described hereon to perpetuate the original location of this corner.

Resident witnesses:

.....  
.....  
.....

FORM 985 M. C. MILLER CO., MILWAUKEE



○ = Corner monument restored.

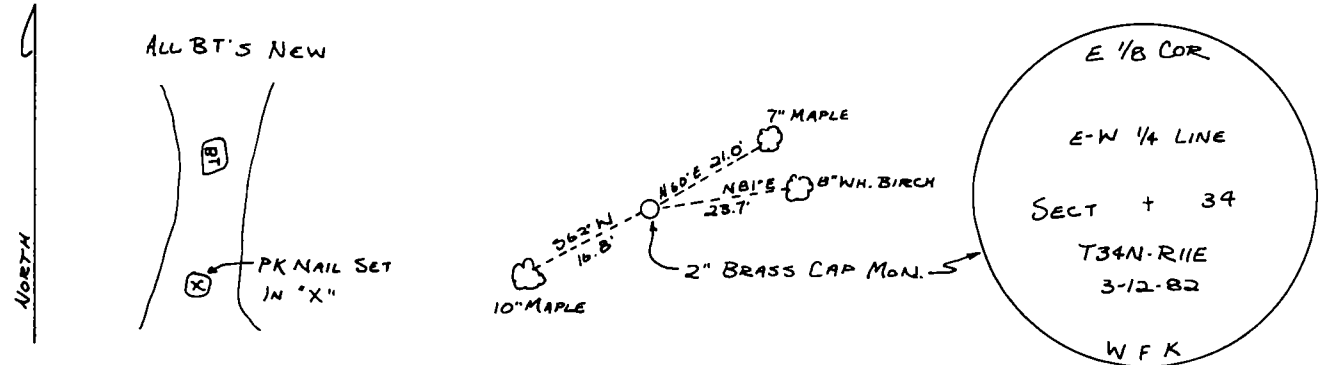
History of original corner establishment:

CORNER NOT ORIGINALLY ESTABLISHED DURING GOV'T SURVEY.

Description of corner evidence found:

CORNER ESTABLISHED BY SUBDIVIDING SECTION 34. SET 2" x 42" BLACK IRON PIPE WITH BRASS CAP MONUMENT MARKED 3 NEW BT'S.

Description of monument and accessories I established to perpetuate the original location of this corner.



Dated at ELCHO, Wis., this 12<sup>th</sup> day of MARCH, 1982.

Signature..... Title COUNTY SURVEYOR Registration No. 1098  
(County Surveyor, Registered Land Surveyor, or other duly authorized official)

Office of Register of Deeds, County of....., I hereby certify that the within instrument was filed in this office for record on the..... day of....., 19..... at..... o'clock..... M.

.....  
(Register of Deeds)

By..... Deputy