

LANGLADE COUNTY U.S. PUBLIC LAND CORNER RESTORATION

The South Quarter corner of Section 34, T. 34 N., R. 11 E., Langlade County, WI.

Corner was: (check all that apply)

4341134 0020

- Restored through acceptance of an obliterated evidence location.
- Restored through acceptance of a found perpetuated location.
- Determined to be lost and re-established through proportionate methods.
 Show bearings and distances to PLSS corners used for proportioning, and show original distances).
 Restored/recovered/re-established in a location that differs from a previously established position.
- Restored/recovered/re-established in a location that differs from a previously established position.
 (Show difference in plan view below).
- Check here if additional information is shown on the reverse side of this form.

Describe record evidence, recovered physical evidence, occupational evidence, testimonial evidence and all other evidence considered in the recovery/restoration of the corner.

The original corner was established in 1859 by Hiram Fellows. Original bearing trees: tamarac, 12", N10E, 24 links and a birch, 12", S60W, 13 links.

In the 1936 re-survey of 33-10, Kowalke and Borth described this corner as: found plain stake. Blazes N, S, E & W. No ogl. BT's. Accepted stake for corner and set 4" iron pipe with brass cap. Marked 2 BT's and a B.O.: x on rock, N49W, 37 1/4 links. In 1977, former surveyor Kelly found the 4" iron pipe with brass cap in place. He marked three bearing trees.

On 10/21/2014, I found the 4" iron pipe in excellent condition, firmly planted in the ground, top up 15". I accept it as found as the best evidence of the quarter corner and preserved its location as shown below.

Physical description of the monument set:

For the corner, I left the existing monument in place, as found.
 Set white vinyl sign post, S80W, 1.0' from the monument.


Describe the accessories used to perpetuate the corner. Include a plan view drawing and accessories found/set. Describe measuring point on bearing trees. Show any topographic features that would aid in future recovery of the corner.




Field book 25-2

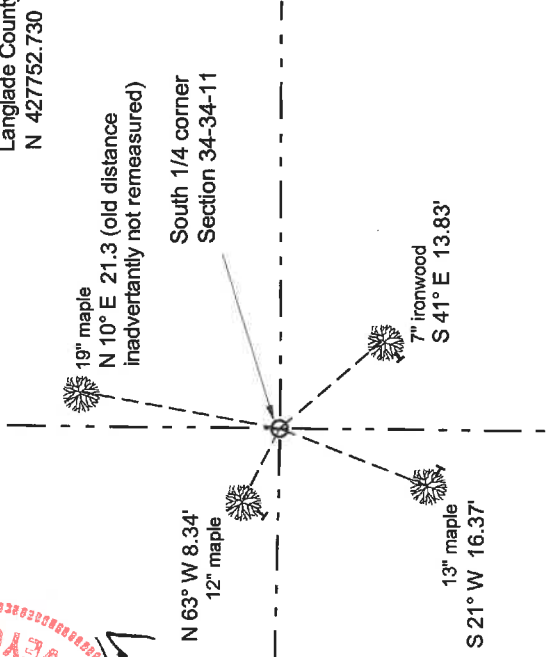


LEGEND

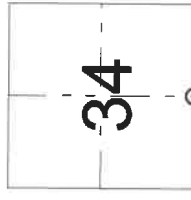
-  4" iron pipe w brass cap found top up 15", solid in ground


Bearing tree distances are measured to an aluminum nail in a low side blaze on the side of the tree shown: 
 Trees have bearing tree signs facing the corner and are painted blue.

Bearings basis: magnetic, hand compass
 Langlade County coordinates NAD83(2011)
 N 427752.730 E 633350.940



Index No. Z 15 34-11



 = corner perpetuated
 The South Quarter
 corner of Section 34,
 T. 34 N., R. 11 E.,
 Langlade County, WI

I, David E. Tlusty, Registered Land Surveyor, as Langlade County Surveyor, certify that the corner location on this record was determined by me and that this U.S. Public Land Survey Monument Record is correct to the best of my knowledge and belief.

CERTIFIED LAND CORNER RESTORATION

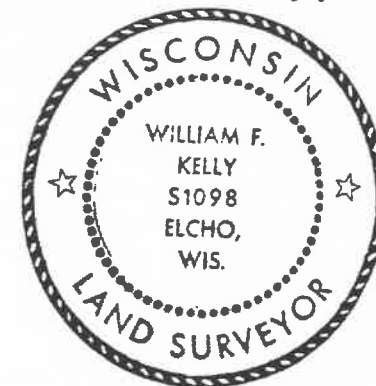
Index No. 21-15
34-11

State of Wisconsin }
County of LANGLADE } ss.

History of original corner establishment:

I WILLIAM F KELLY, do hereby certify that on the 1ST day of OCTOBER, 1977, I found evidence of the N 1/4 corner of SECTION 34 Township 33 & 34, North, Range 11 E, Fourth Principal Meridian, as described hereon; and that from this evidence I established a new monument and accessories as described hereon to perpetuate the original location of this corner.

Description of corner evidence found:
CORNER ESTABLISHED ON 1936 RESURVEY OF TOWNSHIP.

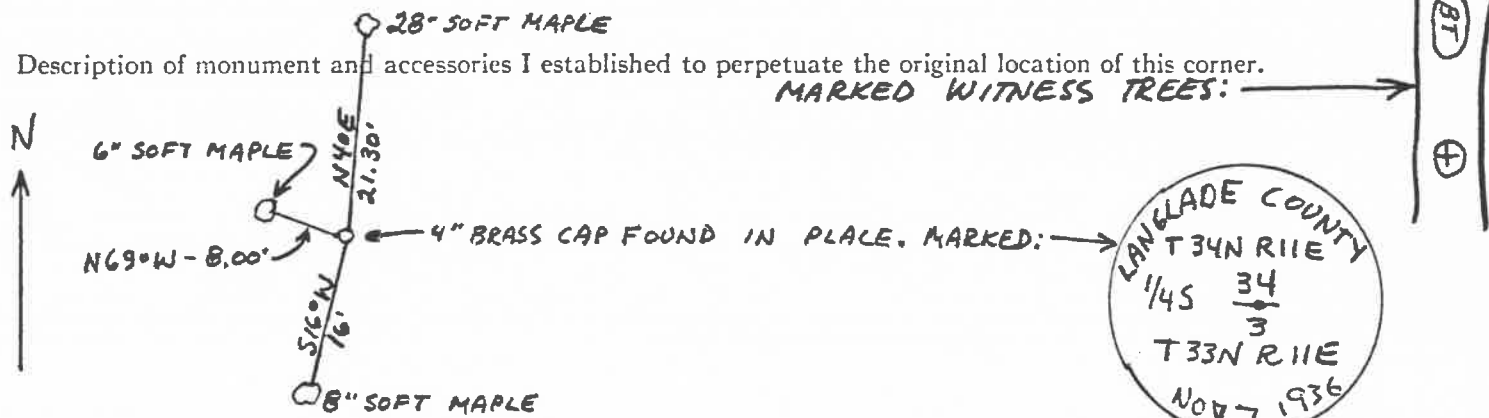


William F. Kelly
10-1-77

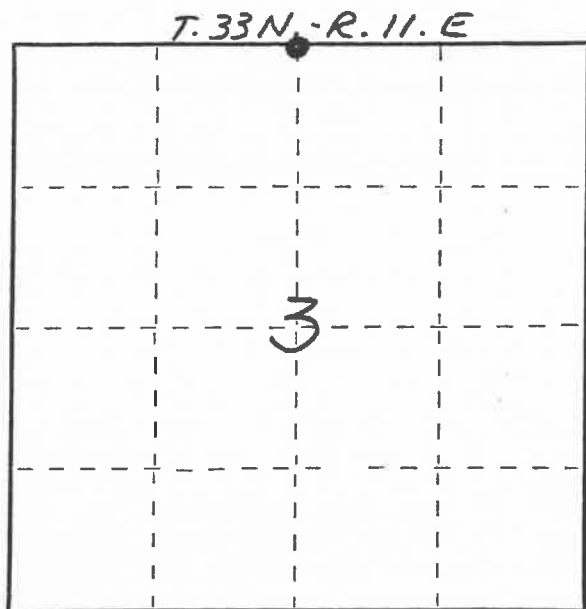
Resident witnesses:

.....
.....
.....

Description of monument and accessories I established to perpetuate the original location of this corner.
MARKED WITNESS TREES: →



FORM 985 H. G. MILLER CO., MILWAUKEE



○ = Corner monument restored.

Dated at ELCHO, Wis., this 1ST day of OCTOBER, 1977.

Signature William F. Kelly Title REGISTERED LAND SURVEYOR Registration No. S1098
(County Surveyor, Registered Land Surveyor, or other duly authorized official)

Office of Register of Deeds, County of....., I hereby certify that the within instrument was filed in this office for record on the.....day of....., 19..... at.....o'clock..... M.

(Register of Deeds)

By.....Deputy