

+
**LANGLADE COUNTY
 U.S. PUBLIC LAND CORNER RESTORATION**

The East quarter corner of Section 33, T. 34 N., R. 11 E., Langlade County, WI.

4341133 2000

Corner was: (check all that apply)

- Restored through acceptance of an obliterated evidence location.
- Restored through acceptance of a found perpetuated location.
- Determined to be lost and re-established through proportionate methods.
- Show bearings and distances to PLSS corners used for proportioning, and show original distances).
- Restored/recovered/re-established in a location that differs from a previously established position.
- (Show difference in plan view below).
- Check here if additional information is shown on the reverse side of this form.

Describe record evidence, recovered physical evidence, occupational evidence, testimonial evidence and all other evidence considered in the recovery/restoration of the corner.

The original corner was established in 1859 by William E. Daugherty. Original bearing trees: hemlock, 6", S82E, 3 links and a hemlock, 12", N73W, 11 links.

In, 1971, Ray Hallisy said "corner set by C. Borth in 1933 from original". Hallisy found wood post down, marked 1/4. Rock mound, and found two grown over BT's. He set a 2" pipe with brass cap for the corner, in a rock mound and marked an oak, 12", S05W, 12'2" and a maple, 8", N33W, 12'6". In 1982, Hallisy found the pipe run over by logging skidder and out of place. He reset it from his two 1971 BT's. 10/20/2014 D. Tlusty found 2" iron pipe with brass cap in good condition. Found Hallisy's two BT's and marked new ones shown below. I accept the location of the 2" iron pipe as a perpetuation of the original corner location.

Physical description of the monument set:

Found 2" iron pipe with brass cap in good condition, did not replace it.

Describe the accessories used to perpetuate the corner. Include a plan view drawing and accessories found/set. Describe measuring point on bearing trees. Show any topographic features that would aid in future recovery of the corner.

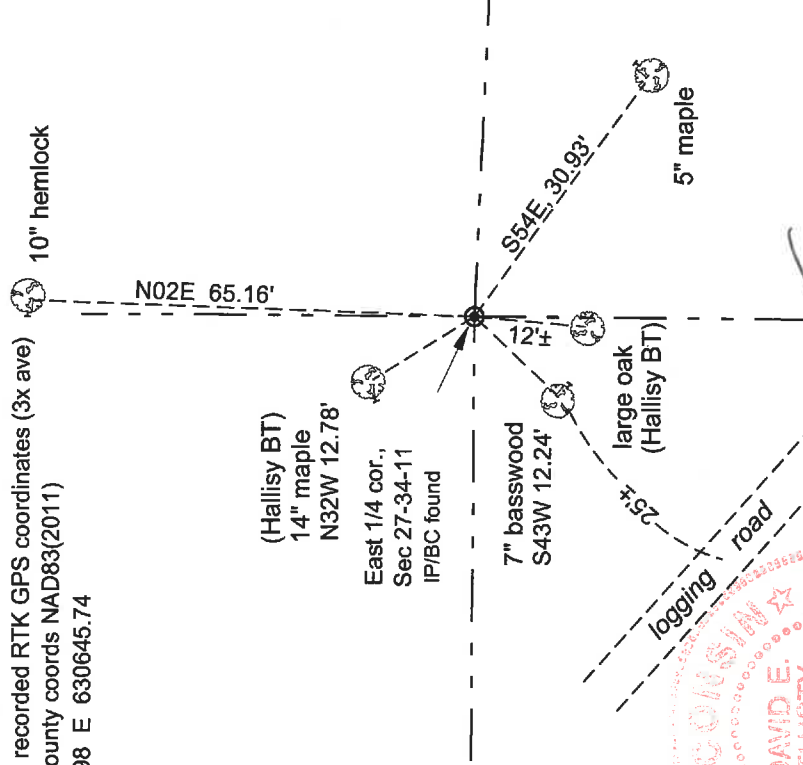
10/20/2014 recorded RTK GPS coordinates (3x ave) 10" hemlock
 Langlade County coords NAD83(2011)
 N 430369.98 E 630645.74

FB 16-115

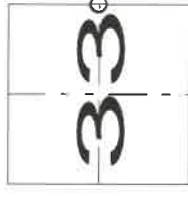


LEGEND

- iron pipe/rod found as noted
- Bearing trees measured to a nail in a low blaze on the left side of the tree as viewed from the corner.
- Bearings referenced to Langlade County Coordinate System (LCCS) grid.



Index No. X 13 34-11



○ = corner perpetuated
 The East quarter corner
 of Section 33,
 T. 34 N., R. 11 E.,
 Langlade County, WI



David E. Tlusty
 4/20/2020

I, David E. Tlusty, Registered Land Surveyor, as Langlade County Surveyor, certify that the corner location on this record was determined by me and that this U.S. Public Land Survey Monument Record is correct to the best of my knowledge and belief.

CERTIFIED LAND CORNER RESTORATION

Index No. X-13

State of Wisconsin }
County of Lan glade } ss.

History of original corner establishment:

I Raymond J. Hallisy, do hereby certify that on the 3rd day of April, 19 82, I found evidence of the 1/4 corner of Section 33 & 34 Township 34, North, Range 11E, Fourth Principal Meridian, as described hereon; and that from this evidence I established a new monument and accessories as described hereon to perpetuate the original location of this corner.

Corner set in the 1930's by C. W. Borth.
2" iron pipe with brass cap set in July 1971
BT's Oak 12" S5W 12' 2"
Maple 8" N33W 12' 6"

Description of corner evidence found:

Found pipe run over by logging skidder and out of place.

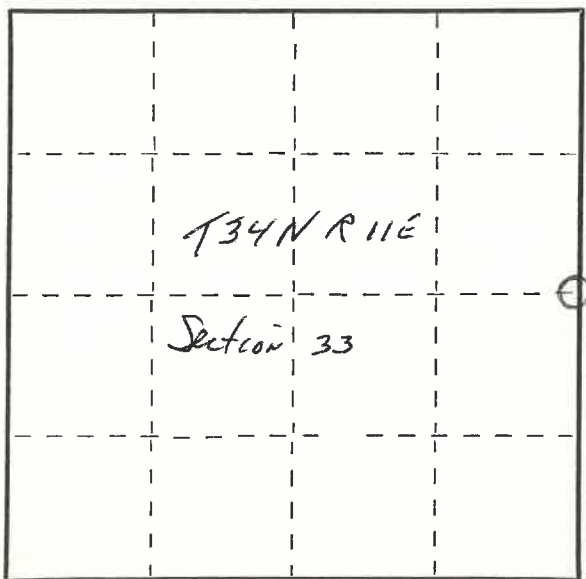
Resident witnesses:

.....
.....
.....

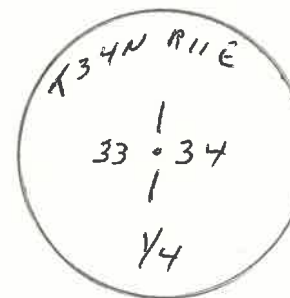
Description of monument and accessories I established to perpetuate the original location of this corner.

Reset pipe and made rock mound.

FORM 985 H. C. MILLER CO., MILWAUKEE



○ = Corner monument restored.



Dated at Antigo, Wis., this 3rd day of April, 19 82

Signature Raymond J. Hallisy Title Land Surveyor Registration No. S-685
(County Surveyor, Registered Land Surveyor, or other duly authorized official)

Office of Register of Deeds, County of _____, I hereby certify that the within instrument was filed in this office for record on the _____ day of _____, 19 _____ at _____ o'clock _____ M.

.....
(Register of Deeds)

By _____ Deputy

CERTIFIED LAND CORNER RESTORATION

34-1

Index No. X-13

State of Wisconsin }
County of Langlade } ss.

History of original corner establishment:

CORNER Set by C. BORTH in 1933 FROM ORIGINAL.

I Raymond J. Hallisy, do hereby certify that on the 10th day of July, 1971, I found evidence of the 1/4 corner of Section 33 & 34 Township 34, North, Range 11E, Fourth, Principal Meridian, as described hereon; and that from this evidence I established a new monument and accessories as described hereon to perpetuate the original location of this corner.

Description of corner evidence found:

Found wood post down, MARKED 1/4, ROCK MOUND

BT's

MAPLE 14" S80°E 4 PACE, MARKINGS GROWN OVER
BASSWOOD 20" S28°W 4 PACE MARKINGS GROWN OVER

Resident witnesses:

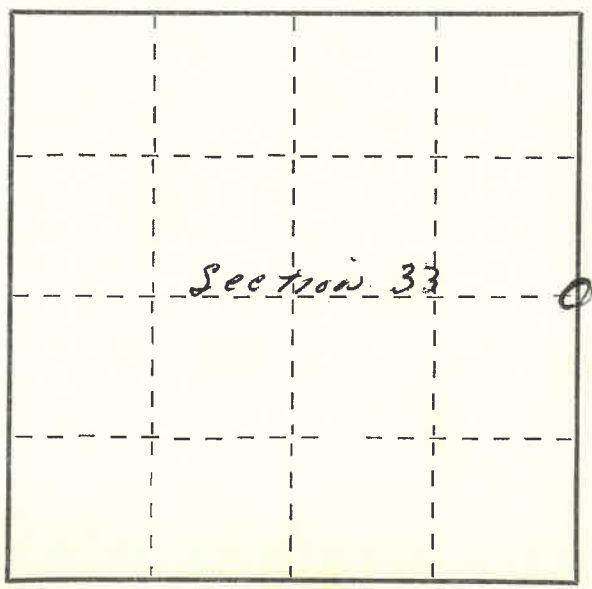
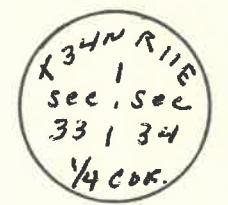
Description of monument and accessories I established to perpetuate the original location of this corner.

Set 2" PIPE WITH BRASS CAP, ROCK MOUND.

NEW BT'S TO CORNER

OAK 12" S5°W 12 FT. 2 inches
MAPLE 8" N33°W 12 FT. 6 inches

B.T.'s FACED AT BASE OF TREE AND SCRIBED BT.



○ = Corner monument restored.

Dated at Antigo, Wis., this 10th day of July, 1971.

Signature R. J. Hallisy Title Reg. Land Surveyor Registration No. 685
(County Surveyor, Registered Land Surveyor, or other duly authorized official)

Office of Register of Deeds, County of _____, I hereby certify that the within instrument was filed in this office for record on the _____ day of _____, 19____ at _____ o'clock _____ M.

(Register of Deeds)

By _____ Deputy

FORM 985 H. C. MILLER CO., MILWAUKEE