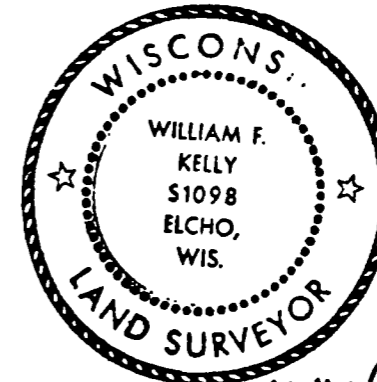


CERTIFIED LAND CORNER RESTORATION

Index No. 20-9
34-11



William F. Kelly 10-1-77

State of Wisconsin }
County of LANGLADE } ss.

I WILLIAM F. KELLY, do hereby certify that on the 1ST day of OCTOBER, 1977, I found evidence of the NW corner of SECTION 4 Township 33, North, Range 11 E, Fourth Principal Meridian, as described hereon; and that from this evidence I established a new monument and accessories as described hereon to perpetuate the original location of this corner.

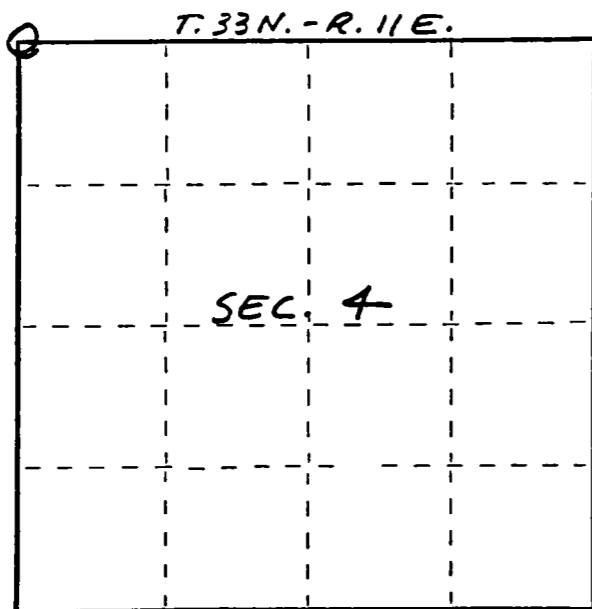
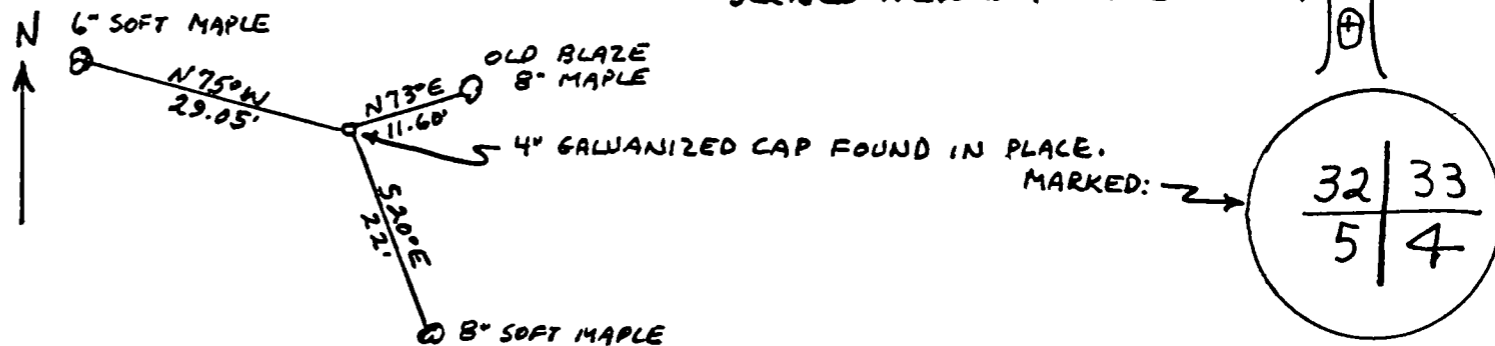
History of original corner establishment:

Description of corner evidence found:
CORNER ESTABLISHED ON RESURVEY OF TOWNSHIP IN 1936.
FOUND 4" GALVANIZED CAP ON PIPE.
ALSO FOUND OLD BLAZE TREE.

Resident witnesses:

.....
.....
.....

Description of monument and accessories I established to perpetuate the original location of this corner.



○ = Corner monument restored.

Dated at ELCHO, Wis., this 1ST day of OCTOBER, 1977.

Signature William F. Kelly Title REGISTERED LAND SURVEYOR Registration No. 51098
(County Surveyor, Registered Land Surveyor, or other duly authorized official)

Office of Register of Deeds, County of....., I hereby certify that the within instrument was filed in this office for record on the..... day of....., 19..... at..... o'clock..... M.

(Register of Deeds)

By..... Deputy

FORM 9035 H. C. MILLER CO., MILWAUKEE