

CERTIFIED LAND CORNER RESTORATION

Index No. X-3

State of Wisconsin }
County of Langlade } ss.

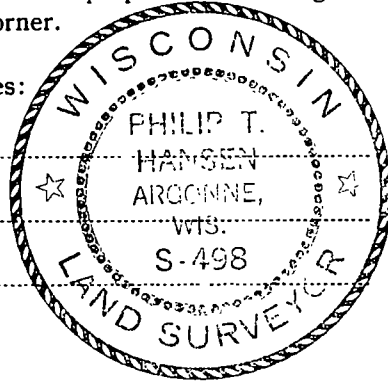
I Philip T. Hansen, do hereby certify that on the 16th day of September, 1977, I found evidence of the C 1/4 corner of Section 31 Township 34, North, Range 11 East, Fourth Principal Meridian, as described hereon; and that from this evidence I established a new monument and accessories as described hereon to perpetuate the original location of this corner.

Resident witnesses:

Glen Barker

Jim Claflin

Herb Wagoner



History of original corner establishment:

Corner recovered and remonumented by Langlade County.

Description of corner evidence found:

Recovered a concrete monument, 3" in diameter with 4" brass cap, stamped: Monument recovered in good condition. Projects 8" above ground.

Also found an old 4" squared cedar post laying beside it, scribed T34N R11E.

Recovered OBTs - Maple 16" N33°E, 33' (24 links), now a decayed stump.

Sugar 9" N19°E, 75.2 links, scribed BT.

Maple 7" N31°W, 34.8 links, scribed BT.

Langlade County
CENTER



Section

31

T34N R11E

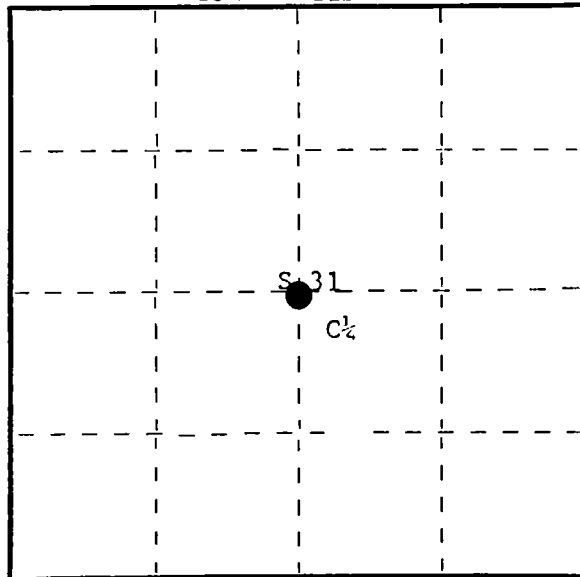
Description of monument and accessories I established to perpetuate the original location of this corner.

Marked NBT - Sugar 10" N16°W, 66.3 links, scribed C 1/4 BT.

All measurements made to face of BT.

FORM 985 M. C. MILLER CO., MILWAUKEE

T34N R11E



○ = Corner monument restored.

Dated at Rhineland, Wis., this 21st day of September, 1977

Signature Philip T. Hansen Title Registered Land Surveyor Registration No. S-498
(County Surveyor, Registered Land Surveyor, or other duly authorized official)

Office of Register of Deeds, County of Langlade, I hereby certify that the within instrument was filed in this office for record on the _____ day of _____, 19____ at _____ o'clock _____ M.

(Register of Deeds)

By _____ Deputy

CERTIFIED LAND CORNER RESTORATION

34-11

Index No. X-3

State of Wisconsin }
County of Langlade } ss.

I, Raymond J. Hallisy, do hereby certify that on the 20th day of July, 1968, I found evidence of the Center 1/4 corner of Section 31 Township 34, North, Range 11, Fourth Principal Meridian, as described hereon; and that from this evidence I established a new monument and accessories as described hereon to perpetuate the original location of this corner.

History of original corner establishment:

Corner set in the 1930's by: C. W. Borth

Description of corner evidence found:

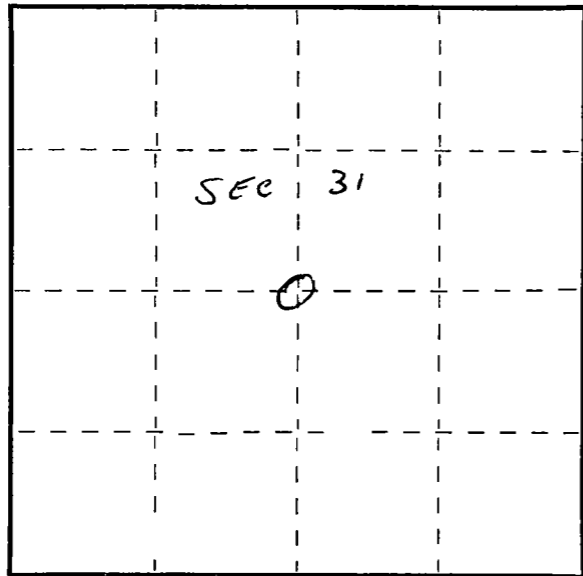
Found stake down point intact. 5 Ft. post 1 Ft. West of corner. Old BT Maple stump N33E 16Ft. Stake was marked S31 T34N R11E

Resident witnesses:

.....
.....
.....

Description of monument and accessories I established to perpetuate the original location of this corner.

Set Brass Cap in cement 3' deep ~~322~~ 4" thick and 1 1/2 ft. above ground

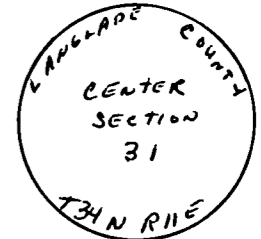


○ = Corner monument restored.

6" RED MAPLE
N44W 23'
SCRIBED BT

BC

8" MAPLE
N14E 49' 8"
SCRIBED BT



Dated at Antigo, Wis., this 20th day of July, 1968

Signature Raymond J. Hallisy Title Reg Land Surveyor Registration No. 1-685
(County Surveyor, Registered Land Surveyor, or other duly authorized official)

Office of Register of Deeds, County of _____, I hereby certify that the within instrument was filed in this office for record on the _____ day of _____, 19____ at _____ o'clock _____ M.

.....
(Register of Deeds)

By..... Deputy

FORM 985 H. C. MILLER CO. MILWAUKEE