

CERTIFIED LAND CORNER RESTORATION

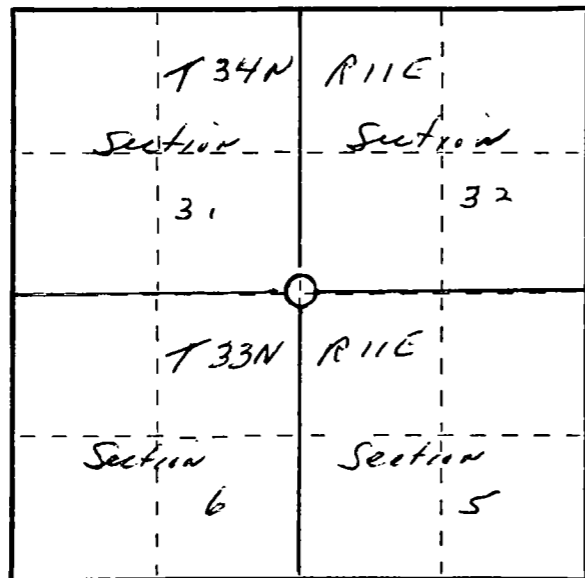
Index No. 2-5

State of Wisconsin }
County of Lan-lade } ss.

I Raymond J. Hallisy, do hereby certify that on the 15th day of May, 19 82, I found evidence of the Section corner of 31, 32, 6, & 5 Township 33 & 34, North, Range 11E, Fourth Principal Meridian, as described hereon; and that from this evidence I established a new monument and accessories as described hereon to perpetuate the original location of this corner.

Resident witnesses:

.....
.....
.....



○ = Corner monument restored.

History of original corner establishment:

Corner set by old County surveyor. 1920-30 circa

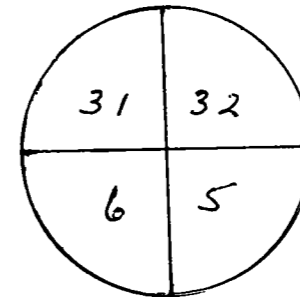
Description of corner evidence found:

4" galvanized pipe with cap.

Description of monument and accessories I established to perpetuate the original location of this corner.

New BT's

- 7" Hard Maple N63E 3.7'
- 7" Hard Maple N40W 14'
- 12" Hard Maple S53W 14.9'
- 4" Hard Maple S10W 14.2'



Dated at Antigo, Wis., this 15th day of May, 19 82.

Signature Raymond J. Hallisy Title Land Surveyor Registration No. S-685
(County Surveyor, Registered Land Surveyor, or other duly authorized official)

Office of Register of Deeds, County of....., I hereby certify that the within instrument was filed in this office for record on the..... day of....., 19..... at..... o'clock..... M.

.....
(Register of Deeds)

By..... Deputy