

CERTIFIED LAND CORNER RESTORATION

Index No. S-4

State of Wisconsin }
County of Langlade } ss.

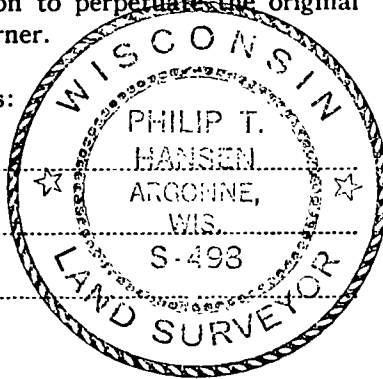
I, Philip T. Hansen, do hereby certify that on the 5th day of March, 1976, I ~~restored~~ established the NE 1/4 corner of Section 30 Township 34, North, Range 11 East, Fourth Principal Meridian, as described hereon; and that from this evidence I established a new monument and accessories as described hereon to perpetuate the original location of this corner.

Resident witnesses:

Glen Barker

Jim Claflin

Herb Wagoner



History of original corner establishment:

Ran a random line N 0° 30' W from the EC 1/16 corner previously established, 39.769 chains to a point 1.012 chains west of E 1/16 between Section 19 and 30. Set temporary post on true line equidistant between corners.
Ran a random line N 89° 30' E from NC 1/16 corner, previously set, a distance of 41.85 chains to a point 72.9 lks north of N 1/16 corner between Sec. 29 and 30. Corrected line and set a 2" iron pipe at intersection of true N-S and E-W 1/4 lines, S 88° 30' W and 20.93 chains from N 1/16 corner between Sec. 29 and 30, and N 0° 57' W 19.888 chains from EC 1/16.

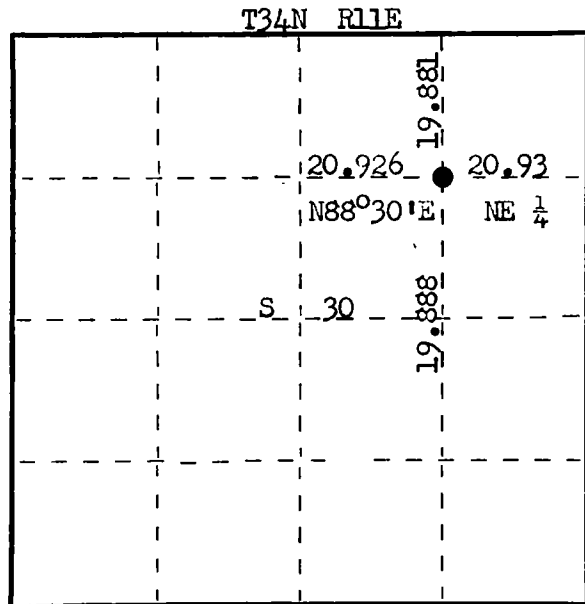
Description of corner evidence found:

Description of monument and accessories I established to perpetuate the original location of this corner.

Set 2" iron pipe with brass cap stamped.
Pipe projects 18" above ground.
NBTs - Sugar 12" N 9° E 41.3 lks, scribed 1/16 BT.
Maple 10" N 58° W 51.8 lks, scribed 1/16 BT.

S498
T34N R11E
S 30
NE 1/16
1976

Pipe and BTs painted blue.



○ = Corner monument restored.

Dated at Rhineland, Wis., this 5th day of April, 1976.

Signature Philip T. Hansen Title Registered Land Surveyor Registration No. S-498
(County Surveyor, Registered Land Surveyor, or other duly authorized official)

Office of Register of Deeds, County of Langlade, I hereby certify that the within instrument was filed in this office for record on the _____ day of _____, 19____ at _____ o'clock _____ M.

(Register of Deeds)

By _____ Deputy