

U. S. PUBLIC LAND SURVEY MONUMENT RECORD

INSTRUCTIONS :

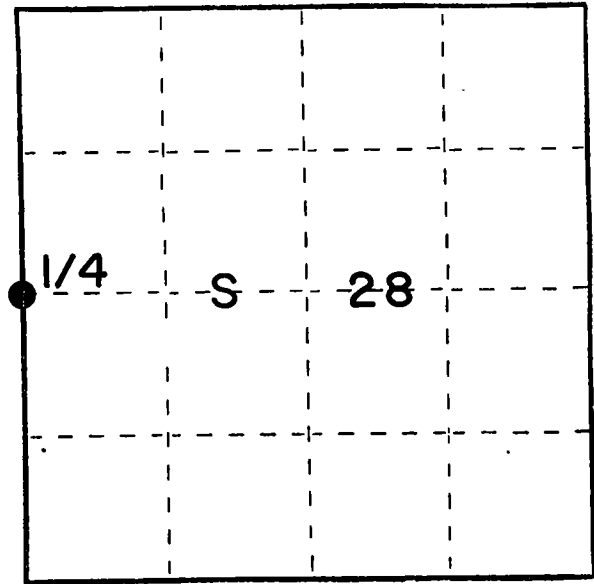
This record shall show the location of the corner and shall include all of the following nine elements (a through i).

- (a) Identify the corner by reference to the U.S. public land survey system.

○ = Corner monument restored.

2-1/4" aluminum pipe

3-1/4" alloy cap



T34N R11E

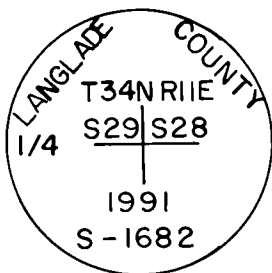
- (b) Describe any record evidence, monument evidence, occupational evidence, testimonial evidence or any other material evidence you considered, and whether the monument was found or placed.

No evidence of any previous survey or quarter corner or accessories. Mr. Elton A. Peterson, Surveying Supervisor for Wisconsin Public Service Corp. informed me with a letter and profile plan that their 1964 field survey did not find the quarter corner. Re-established quarter corner by proportional measurement. Total distance from southwest section corner to northwest section corner is 5309.04'. Set quarter corner 2654.52' intermediate.

- (c) In the plan view drawing below, provide reference ties to at least 4 witness monuments, or, if the location is within a municipality, to at least 2 witness monuments. (Witness monuments shall be made of concrete, natural stone, iron or other equally durable material.) Describe witness monuments.

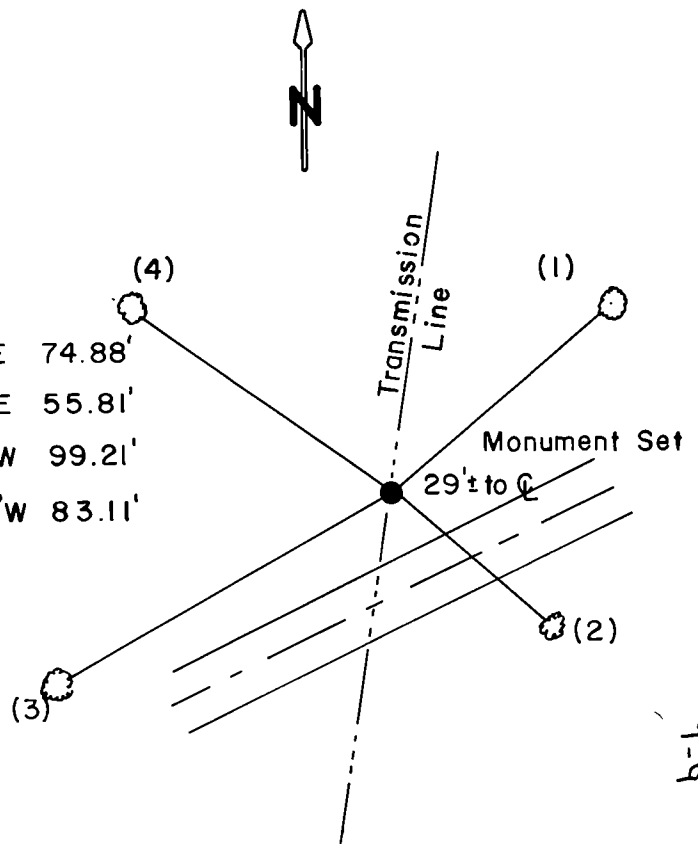
- (d) Show a plan view drawing depicting the relevant monuments and reference ties which is sufficient in detail to enable accurate relocation of the corner monument if the corner monument is disturbed. Indicate north.

LANGLADE COUNTY



4" low surface

- (1) 4" Sugar Maple N 50° E 74.88'
- (2) 7" Sugar Maple S 50° E 55.81'
- (3) 10" Red Oak S 61° W 99.21'
- (4) 6" Balsam Fir N 55° W 83.11'

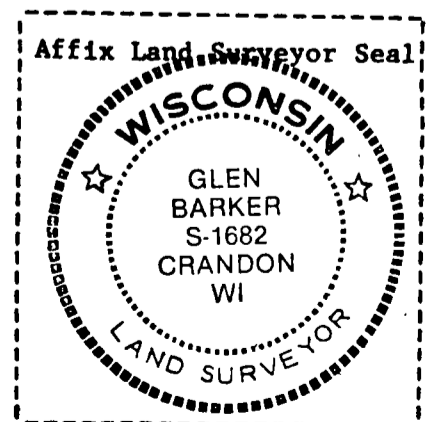
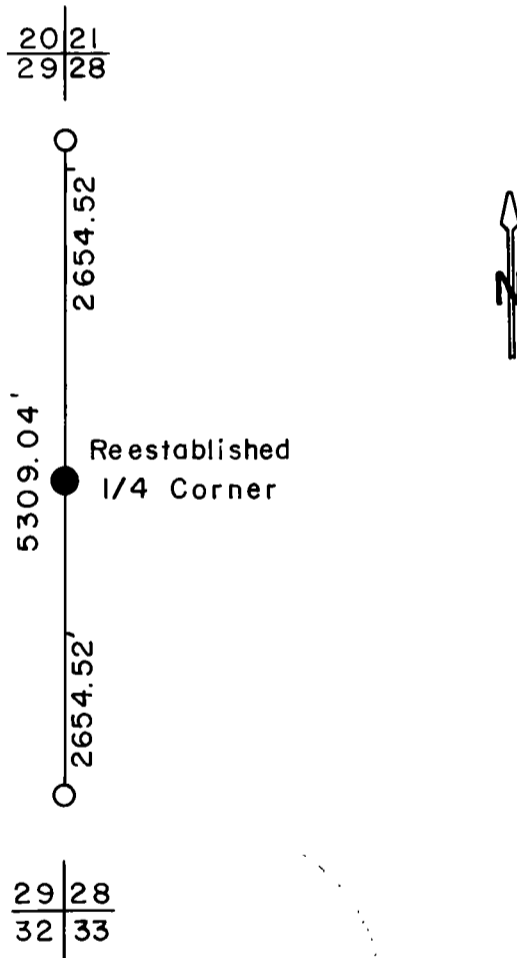


(e) Describe any material discrepancy between the location of the corner as restored or reestablished and the location of that corner as previously restored or reestablished by distance and direction. Show the discrepancy on the plan view drawing under (d), above. Show the distances between the corner as previously restored or reestablished and (1) the corner as restored or reestablished, and (2) to at least 2 of the witness monuments shown on the drawing in (d), above.

(f) Was the corner restored through acceptance of (1) an obliterated evidence location, or, (2) a found perpetuated location?

(g&h) Was the corner reestablished through lost corner proportionate methods? If so, show the method, including the directions and distances to other public land survey corners used as evidence or used for proportioning in determining the corner location?

Proportionate Method



(i) I, Glen Barker
 (type or print name) certify that the corner location shown on this record was determined by me or under my direction and control and that this U.S. Public Land Survey Monument Record is correct and complete to the best of my knowledge and belief.

Signature

Date

Glen Barker May 30, 1991