

CERTIFIED LAND CORNER RESTORATION

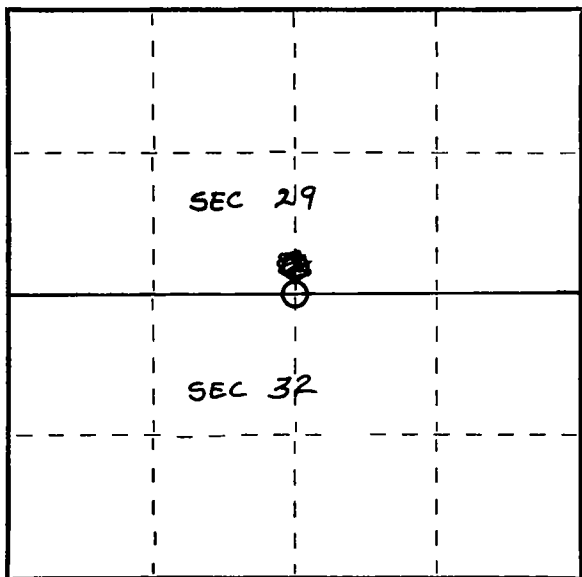
34-11
Index No. V-7

State of Wisconsin }
County of Lanlade } ss.

I Raymond J. Hallisy, do hereby certify that on the 5th day of May, 19 69, I found evidence of the 1/4 corner of Section 29 & 32 Township 34, North, Range 11E, Fourth, Principal Meridian, as described hereon; and that from this evidence I established a new monument and accessories as described hereon to perpetuate the original location of this corner.

Resident witnesses:

.....
.....
.....



○ = Corner monument restored.

History of original corner establishment:

Corner reset in 9/26/34 by C. Borth

Description of corner evidence found:

Found old stake down point in ground. 1/2" by 3" flat iron
His old pine stump BT rotten

Description of monument and accessories I established to perpetuate the original location of this corner.

Set iron pipe with 4" brass cap

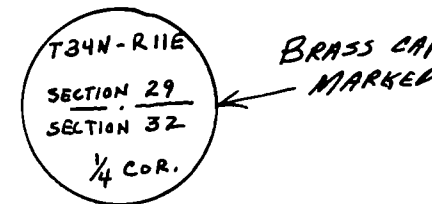
~~XX~~

B.T.'s to corner

Balsam 8" 90E 7Ft. 9 inches

Balsam 7" N68W 29Ft. 8 inches

B.T.'s faced at base of tree and scribed BT



Dated at Antigo, Wis., this 5th day of May, 19 69.

Signature Raymond J. Hallisy Title Reg. Land Surveyor Registration No. S-685
(County Surveyor, Registered Land Surveyor, or other duly authorized official)

Office of Register of Deeds, County of _____, I hereby certify that the within instrument was filed in this office for record on the _____ day of _____, 19 _____ at _____ o'clock _____ M.

.....
(Register of Deeds)

By _____ Deputy