

CERTIFIED LAND CORNER RESTORATION

Index No. V-9

State of Wisconsin }  
County of Lacrosse } ss.

History of original corner establishment:

Charles Bonth Survey 1930's

I Raymond Hallis, do hereby certify that on the 4<sup>th</sup> day of May, 1974, I found evidence of the Section corner of 28, 29, 32, 33 Township 34, North, Range 11E, Fourth Principal Meridian, as described hereon; and that from this evidence I established a new monument and accessories as described hereon to perpetuate the original location of this corner.

Description of corner evidence found:

His scribed post and well point,  
Post ~~was~~ rotted - marks quite plain

1/31/11 DALE CARLSON  
FND COR WITH 1METER  
GPS UNIT AT:  
N 432907  
E 625320  
3" BIRCH CLUMP E 22'±  
6' TAM S27W 26'±  
12" W. SPRUCE NZ1W 70'±  
@ EDGE OF TAGS

Resident witnesses:

Description of monument and accessories I established to perpetuate the original location of this corner.

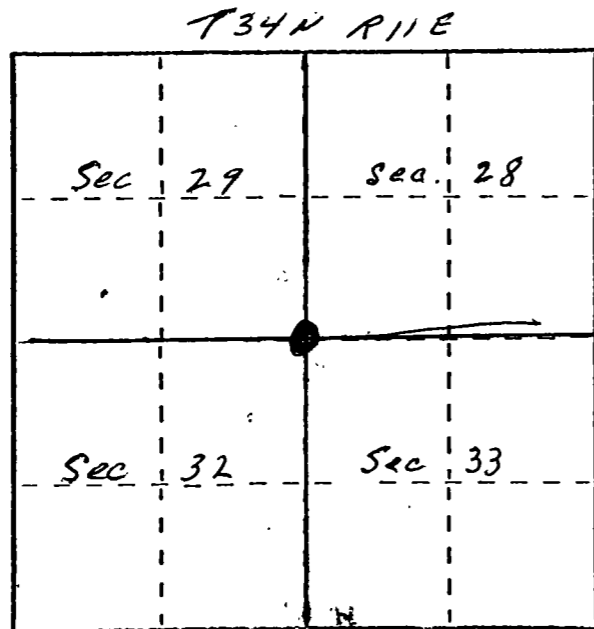
Set 2" iron pipe with brass cap  
at side of post

Corner sits in Tag alder sup.

No trees to use for BT's

T34N R11E  
29 28  
- -  
32 33

FORM 985 M. C. MILLER CO., MILWAUKEE



○ = Corner monument restored.

Dated at Antigo, Wis., this 4<sup>th</sup> day of May, 1974.

Signature Raymond Hallis Title Reg Land Surveyor Registration No. 5685  
(County Surveyor, Registered Land Surveyor, or other duly authorized official)

Office of Register of Deeds, County of \_\_\_\_\_, I hereby certify that the within instrument was filed in this office for record on the \_\_\_\_\_ day of \_\_\_\_\_, 19\_\_\_\_ at \_\_\_\_\_ o'clock \_\_\_\_\_ M.

(Register of Deeds)

By \_\_\_\_\_ Deputy