

4341128 0000

U.S. PUBLIC LAND SURVEY MONUMENT RECORD

(Prepared and as required by S. A-E 7.08 WI Administrative Code)

The SOUTHWEST corner of Section 27, T. 34 N., R. 11 E., Langlade County, WI
Corner was (check all that apply)

- Restored through acceptance of an obliterated evidence location.
- Restored through acceptance of a found perpetuated location.
- Determined to be lost and re-established through proportionate methods. (show bearings and distances to PLSS corners used for proportioning.)
- Restored/recovered/re-established in a location that differs from a previously established position. (Show difference in plan view below.)
- Check here if additional information is shown on the reverse side of this form.

Describe record evidence, recovered physical evidence, occupational evidence, testimonial evidence, and all other evidence considered in the recovery/restoration of the corner.

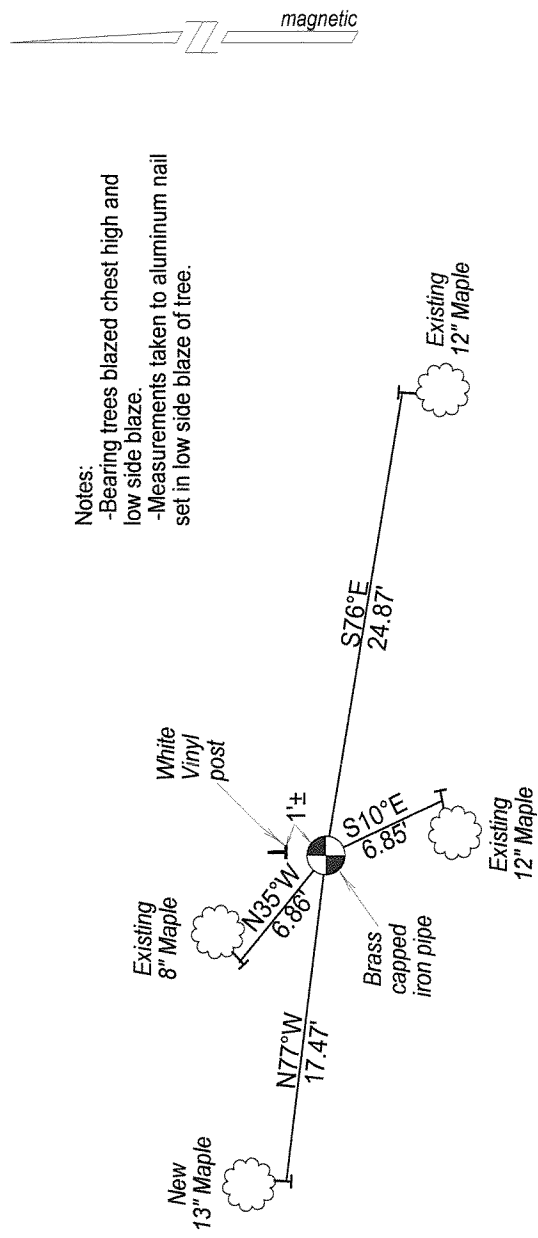
July 1859 - W.E. Daugherty set original section corner post; Tamarac 10", N48°W, 9 links; Aspen 8", S45°E, 8 links.
 1952 - Genisot Engineering performed survey work in sections 27 & 34. Their survey map (Langlade Co. surveyor's office #30436) shows this corner in place but does not describe it.
 1980? - An un-dated and un-signed CPI survey map (Langlade Co. surveyor's office #30198) shows this corner with complete dimensions for the SW 1/4 of Section 27. This map describes the corner as "replaced wood post with 2 1/2" I.P. with brass cap."

2012 - I recovered a 2.5" iron pipe with 3" brass cap with rock mound around it. Brass cap was stamped by Philip Hansen S-498 in 1980. I also found 3 existing bearing trees at corner location.

Physical description of the monument set:

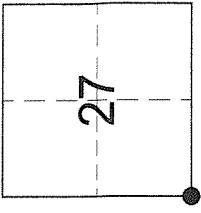
I accept the 3" brass capped iron pipe as the corner, and tied it out as follows.

Describe the accessories used to perpetuate the location of the corner. Include a plan view drawing and indicate accessories found/set. Describe measuring point on bearing trees. Show any topographic features that would aid in future recovery of the corner.

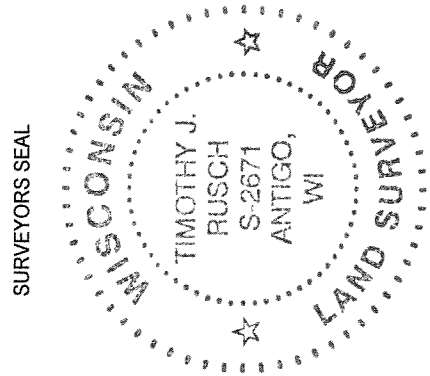


Notes:
 -Bearing trees blazed chest high and low side blaze.
 -Measurements taken to aluminum nail set in low side blaze of tree.

The SOUTHWEST
 Corner of Section 27
 T. 34 N., R. 11 E.
 Langlade County, WI



INDEX No. **V 13** 34-11



I, Timothy J. Rusch certify that the corner location shown on this record was determined by me or under my direction and control and that this U.S. Public Land Survey Monument Record is correct and complete to the best of my knowledge and belief.

Timothy J. Rusch 10-24-2012
 Signature Date

● = Location of corner