

CERTIFIED LAND CORNER RESTORATION

Index No. T-14

State of Wisconsin }
County of Langlade } ss.

I Daniel K. Pledger, do hereby certify that on the 27th day of June, 1980, I ~~found~~ established ~~the~~ WC 1/16 corner of section 27 Township 37, North, Range 11 East, Fourth Principal Meridian, as described hereon; and that from this evidence I established a new monument and accessories as described hereon to perpetuate the original location of this corner.

Resident witnesses:

Jim Claflin

Herb Wagoner

History of original corner establishment:

No record of previous survey.



Description of corner evidence found:

No evidence of any corner recovered.

Corner established by proportion.

Ran traverse from previously established C 1/4 corner section 27 to 1/4 corner between sections 27 and 28 to establish W.C. 1/16 corner. Computed line is N 89° 42' 03" W 2773.79 feet. Set W.C. 1/16 1386.89 feet intermediate.

Description of monument and accessories I established to perpetuate the original location of this corner.

Set a 1-1/2" iron pipe with 2" brass cap - stamped:

Monument projects 18" above ground.

Marked N.B.T.'s -

Sugar 6" N68°E 23.58 feet

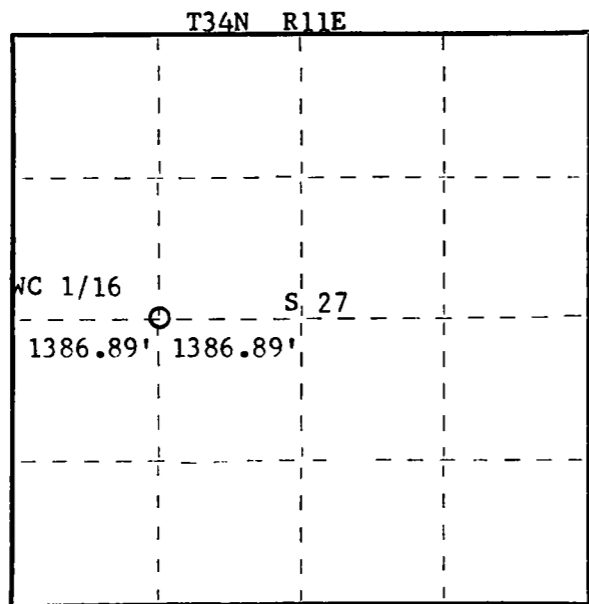
Sugar 6" N55°W 25.66 feet

Red Oak 7" S71°W 30.27 feet

scribed 1/16 BT.

S1537
T34N R11E
WC 1/16 S 27
CPI-1980

FORM 985 H. C. MILLER CO., MILWAUKEE



○ = Corner monument restored.

Dated at Rhineland, Wis., this 28th day of July, 1980

Signature Daniel K. Pledger Title Registered Land Surveyor Registration No. S1537
(County Surveyor, Registered Land Surveyor, or other duly authorized official)

Office of Register of Deeds, County of Langlade, I hereby certify that the within instrument was filed in this office for record on the _____ day of _____, 19____ at _____ o'clock _____ M.

(Register of Deeds)

By _____ Deputy