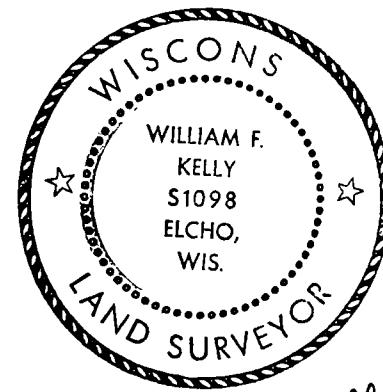


CERTIFIED LAND CORNER RESTORATION

Index No. T-15

State of Wisconsin }
County of LANGLADE } ss.

History of original corner establishment:



William F. Kelly

I WILLIAM F. KELLY, do hereby certify that on the 29th day of NOVEMBER, 1974, I found evidence of the CENTER SECTION corner of SECTION 27 Township 34 North, Range 11 East, Fourth Principal Meridian, as described hereon; and that from this evidence I established a new monument and accessories as described hereon to perpetuate the original location of this corner.

Description of corner evidence found:

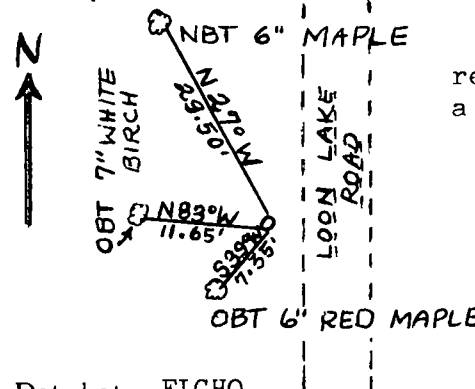
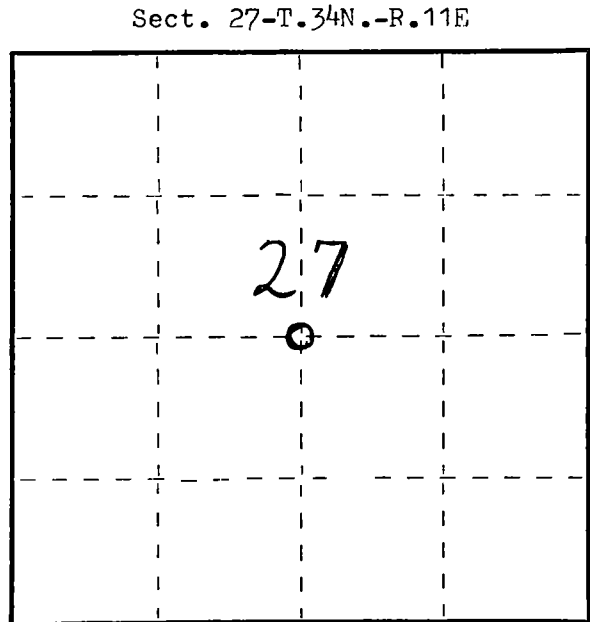
I found the Center Section 27-T.34N.-R.11E. Monument (Concrete with Brass Cap) broken off and lying on the ground.

Resident witnesses:

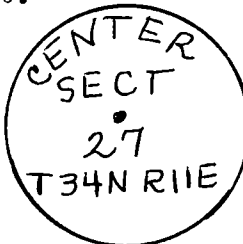
.....
.....
.....

Description of monument and accessories I established to perpetuate the original location of this corner.

I set a new 2" Black Iron Pipe with Brass Cap marked, reset the Original 5" Sq. Wood Post as a Witness, and established a third bearing tree. Stones placed around monument.



NOTES: Corner is on the West right of way of road at top of bank.
OBT are scribed at base and blazed on trunk.
New + mark at base.
New bearing tree blazed NBT chest high and marked with a + at base.



Dated at ELCHO, Wis., this 29th day of NOVEMBER, 1974.

Signature *William F. Kelly* Title REGISTERED LAND SURVEYOR Registration No. S. 1098
(County Surveyor, Registered Land Surveyor, or other duly authorized official)

Office of Register of Deeds, County of _____, I hereby certify that the within instrument was filed in this office for record on the _____ day of _____, 19____ at _____ o'clock _____ M.

(Register of Deeds)

By _____ Deputy

○ = Corner monument restored.

FORM 985 H. C. MILLER CO., MILWAUKEE

CERTIFIED LAND CORNER RESTORATION

34-11
Index No. T-15

State of Wisconsin }
County of Langlade } ss.

I, Raymond J. Halley, do hereby certify that on the 11th day of May, 1969, I found evidence of the Center corner of Section 27 Township 34, North, Range 11E, Fourth, Principal Meridian, as described hereon; and that from this evidence I established a new monument and accessories as described hereon to perpetuate the original location of this corner.

Resident witnesses:
.....
.....
.....

History of original corner establishment:

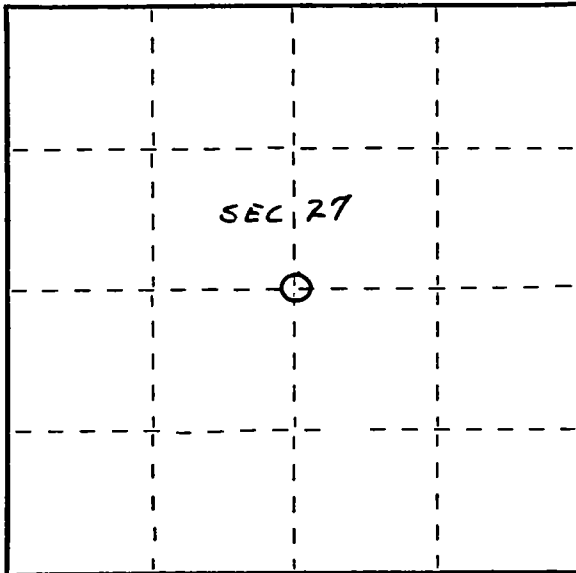
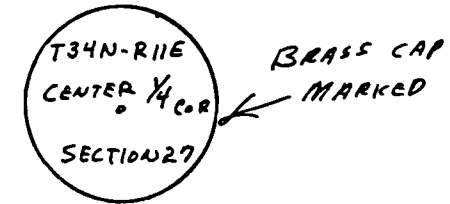
Corner set in the 1950's by F. B. Vincentsen in the plat of Loon Lake

Description of corner evidence found:

Squared stake down point in ground
BT 30" pine stump

Description of monument and accessories I established to perpetuate the original location of this corner.

Set 4" brass cap in cement
B.T.'s to corner
White Birch 7" N83W 11ft. 8 inches
Red Maple 6" S37W 7ft. 4 inches
B.T.'s faced at base of tree and scribed BT



○ = Corner monument restored.

Dated at Antigo, Wis., this 11th day of May, 1969

Signature Raymond J. Halley Title Reg. Land Surveyor Registration No. S-685
(County Surveyor, Registered Land Surveyor, or other duly authorized official)

Office of Register of Deeds, County of....., I hereby certify that the within instrument was filed in this office for record on the..... day of....., 19..... at..... o'clock..... M.

.....
(Register of Deeds)

By..... Deputy

FORM 9875 M. C. MILLER CO., MILWAUKEE