

**LANGLADE COUNTY
U.S. PUBLIC LAND CORNER RESTORATION**

The South quarter corner of Section 27, T. 34 N., R. 11 E., Langlade County, WI.

Corner was: (check all that apply)

4341127 0020

- Restored through acceptance of an obliterated evidence location.
- Restored through acceptance of a found perpetuated location.
- Determined to be lost and re-established through proportionate methods.
- Show bearings and distances to PLSS corners used for proportioning, and show original distances).
- Restored/recovered/re-established in a location that differs from a previously established position.
- (Show difference in plan view below).
- Check here if additional information is shown on the reverse side of this form.

Describe record evidence, recovered physical evidence, occupational evidence, testimonial evidence and all other evidence considered in the recovery/restoration of the corner.

The original corner was established in 1859 by William E. Daugherty. Original bearing trees: fir, 7", N07E, 28 links and a birch, 10", S66W, 15 links.

In 1969, Ray Hallissy said the corner was set in 1960's by Wincentsen in plat of Loon Lake. Hallissy found old stake point in ground and rock mound. He found two old maple BT's and made two new maple BT's. Hallissy set brass cap in cement for the corner. In 1976, Philip Hansen recovered Hallissy's 3" concrete post with brass cap, and found very old maple BT's and found Hallissy BT's. Hansen didn't set any new BT's, only painted the existing BT's blue.

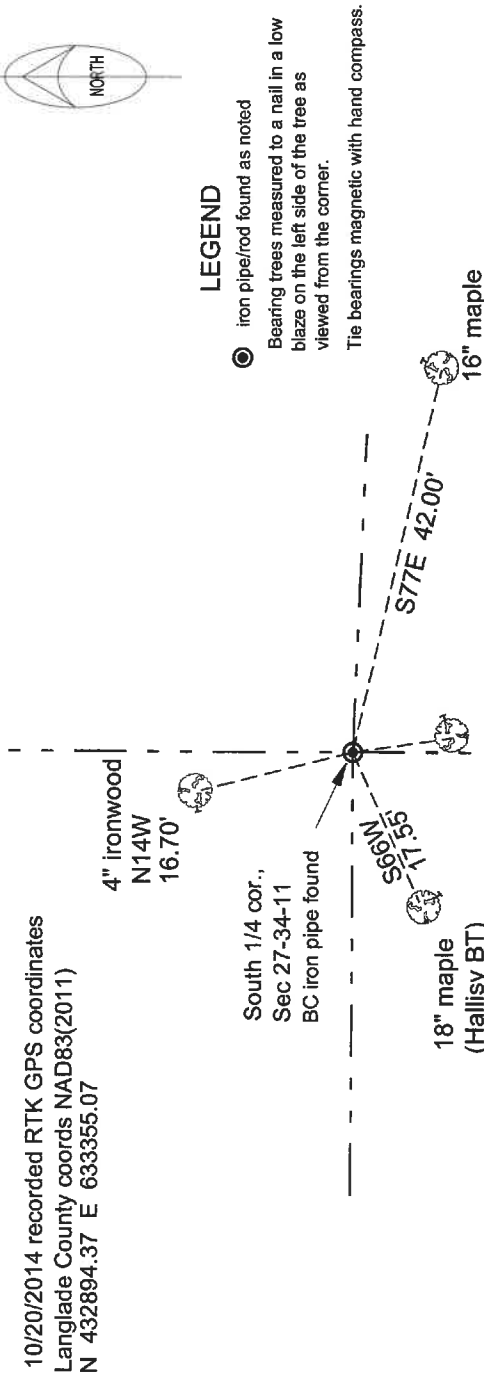
10/20/2014 D. Tlusty found 3" dia. conc post with 4" brass cap up 0.7' in mound of stones. Found both Hallissy maple BT's. Accepted monument as found as the best evidence of the original corner location.

Physical description of the monument set:

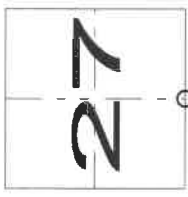
Found 3" iron pipe with brass cap in good condition, did not replace it.

Describe the accessories used to perpetuate the corner. Include a plan view drawing and accessories found/set. Describe measuring point on bearing trees. Show any topographic features that would aid in future recovery of the corner.

FB 16-115



Index No. V 15 34-11



○ = corner perpetuated
The South quarter corner of Section 27,
T. 34 N., R. 11 E.,
Langlade County, WI



David E. Tlusty
8/20/2020

I, David E. Tlusty, Registered Land Surveyor, as Langlade County Surveyor, certify that the corner location on this record was determined by me and that this U.S. Public Land Survey Monument Record is correct to the best of my knowledge and belief.

CERTIFIED LAND CORNER RESTORATION

Index No. V-15

State of Wisconsin }
County of Langlade } ss.

History of original corner establishment:
Corner remonumented by Langlade County Surveyors.

I, Philip T. Hansen, do hereby certify that on the 21st day of April, 1976, I found evidence of the Quarter corner of Section 27 and 34 Township 34, North, Range 11 East, Fourth Principal Meridian, as described hereon; and that from this evidence I established a new monument and accessories as described hereon to perpetuate the original location of this corner.

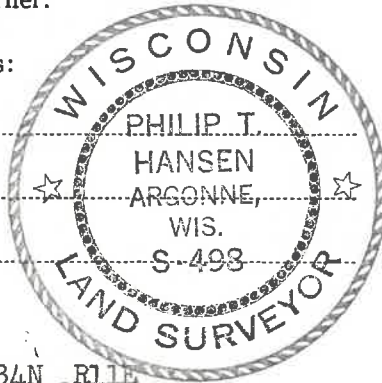
Description of corner evidence found:
Recovered 3" diameter concrete post with brass cap, around which was built a rock cairn monument in perfect condition. Cap stamped.
Recovered OBT Sugar 7" (9") N10°E (N14°E) 37.4 lks.
Sugar 6" (8") S10°E 15.8 lks. T34N R11E
Scribing on both BTs grown over. Sec. 27
Sugar 10" S82°E 41.7" - (63 lks) Scribed BT. 1/4
Maple 14" S60°W 25.2 lks. Sec. 34

Resident witnesses:

Glen Barker

Jim Claflin

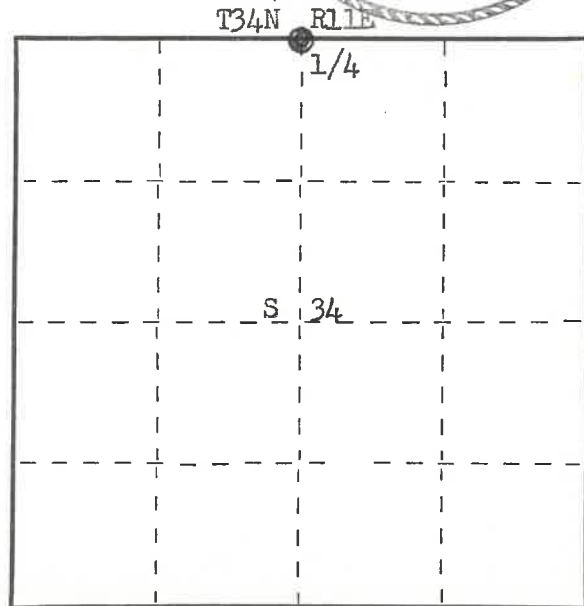
Herb Wagoner



Description of monument and accessories I established to perpetuate the original location of this corner.

Painted monument and BTs blue.
No additional accessories established.

Wisconsin Printing & Publishing Co.
MILWAUKEE, WISCONSIN
FORM 985



○ = Corner monument restored.

Dated at Rhineland, Wis., this 19th day of May, 19 76.

Signature Philip T. Hansen Title Registered Land Surveyor Registration No. S-498
(County Surveyor, Registered Land Surveyor, or other duly authorized official)

Office of Register of Deeds, County of Langlade, I hereby certify that the within instrument was filed in this office for record on the _____ day of _____, 19 _____ at _____ o'clock _____ M.

(Register of Deeds)

By _____ Deputy

CERTIFIED LAND CORNER RESTORATION

34-11

Index No. V-15

State of Wisconsin }
County of Lanlade } ss.

History of original corner establishment:

Corner set in the 1950's by F. B. Wincentzen in the plat of Loon Lake

I, Raymond J. Hallisy, do hereby certify that on the 11th day of May, 1969, I found evidence of the ~~XXX~~ N 1/4 corner of Section 34 Township 34, North, Range 11E, Fourth, Principal Meridian, as described hereon; and that from this evidence I established a new monument and accessories as described hereon to perpetuate the original location of this corner.

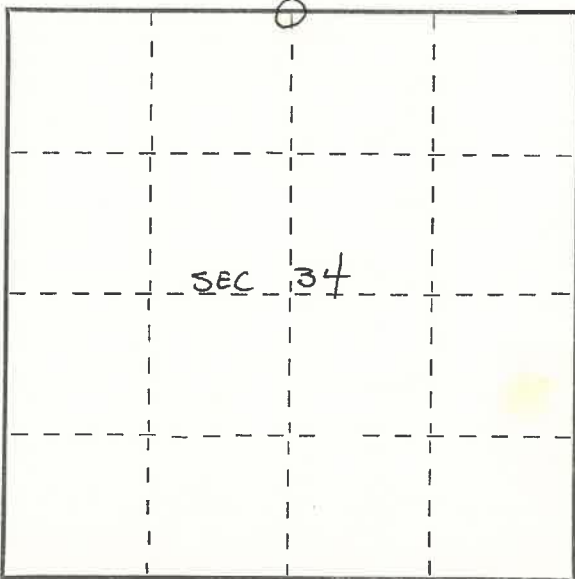
Description of corner evidence found:

Found old stake down point in ground and rock mound
BT's ~~XX~~ Hard Maple 7" N10E 37.4
Hard Maple 6" S10E 15.8

Resident witnesses:

Description of monument and accessories I established to perpetuate the original location of this corner.

Set 4" brass cap in cement
B.T.'s to corner
Hard maple 10" S82E 41Ft. 7 inches
Red Maple 14" S60W
B.T.'s faced at base of tree and scribed BT



○ = Corner monument restored.

Dated at Antigo, Wis., this 11th day of May, 1969.

Signature Raymond J. Hallisy Title Reg. Land Surveyor Registration No. S-685
(County Surveyor, Registered Land Surveyor, or other duly authorized official)

Office of Register of Deeds, County of _____, I hereby certify that the within instrument was filed in this office for record on the _____ day of _____, 19____ at _____ o'clock _____ M.

(Register of Deeds)

By _____ Deputy