

CERTIFIED LAND CORNER RESTORATION

Index No. V-17

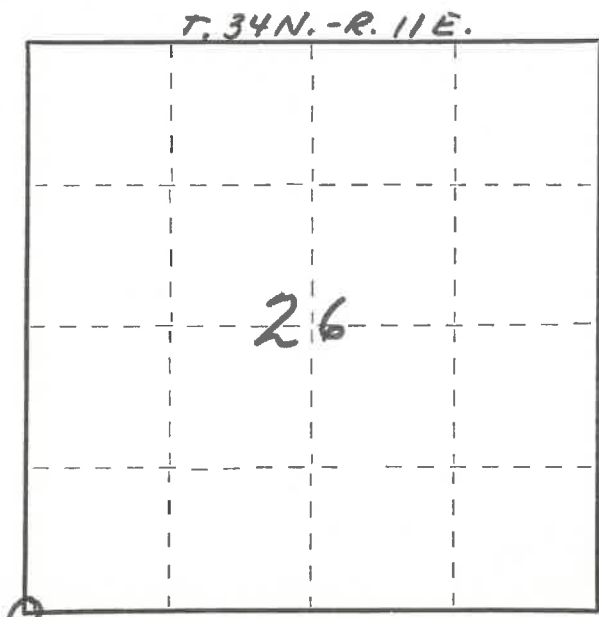
State of Wisconsin }
 County of LANGLADE } ss.

I WILLIAM F. KELLY, do hereby certify that on the 29th day of SEPTEMBER, 1977, I found evidence of the SECTION corner of SECTIONS 27, 26, 34 & 35 Township 34, North, Range 11 E, Fourth Principal Meridian, as described hereon; and that from this evidence I established a new monument and accessories as described hereon to perpetuate the original location of this corner.

Resident witnesses:

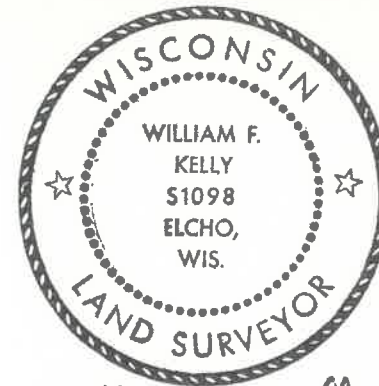
.....

FORM 985 H. C. MILLER CO., MILWAUKEE



○ = Corner monument restored.

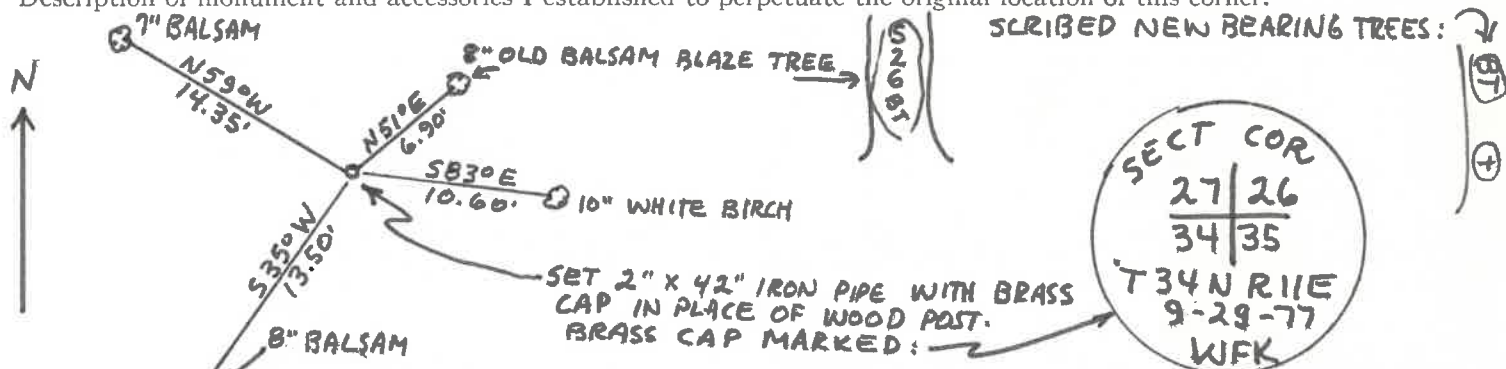
History of original corner establishment:



William F. Kelly 9-29-77
LOCATED S.W. CORNER SECTION 26 T.34N.-R.11E. - 4" CEDAR POST IN SWAMP. FOUND ONE SCRIBED BEARING TREE.

Description of corner evidence found:

Description of monument and accessories I established to perpetuate the original location of this corner.



Dated at ELCHO, Wis., this 29th day of SEPTEMBER, 1977.

Signature William F. Kelly Title REGISTERED LAND SURVEYOR Registration No. S1098
 (County Surveyor, Registered Land Surveyor, or other duly authorized official)

Office of Register of Deeds, County of _____, I hereby certify that the within instrument was filed in this office for record on the _____ day of _____, 19____ at _____ o'clock _____ M.

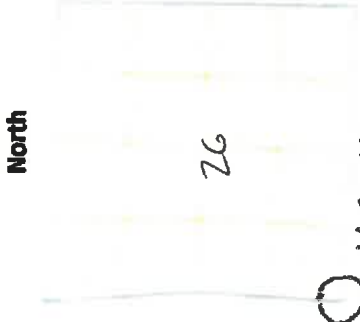
 (Register of Deeds)
 By _____ Deputy

PLSS field condition report

Date: 4-9-20 Time of day: 12:00

By: Luke Williams

Section 26 Town 34 Range 11
(circle corner location on diagram)



Does the monument appear to be tilted, smashed, uprooted, covered or otherwise damaged by the windstorm?

YES NO A large birch tree was uprooted immediately adjacent to monument, causing the monument to tilt.

Are any bearing trees broken, uprooted, missing or otherwise damaged by the windstorm? YES NO No bearing trees were found, but severe damage

occurred at corner location. Several white birch and balsam were down near where they were described on the sheet.

TAKE PICTURES

For the first four pictures, do them in this order:

Looking north, looking east, looking south, looking west and, by standing about 6 feet behind the monument, include the monument in each picture.

Then take a picture of the top of the monument, close enough to be able to read what is stamped on the cap. Make sure all pictures are in focus.

V17
~~V21~~ 34-11