

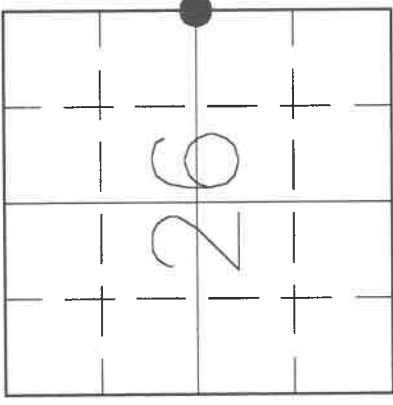
U.S. PUBLIC LAND SURVEY MONUMENT RECORD

3411262000

HISTORY OF ORIGINAL CORNER ESTABLISHMENT AND SUBSEQUENT RESTORATION AND DESCRIPTION OF ANY RECORD, MONUMENT OCCUPATIONAL, TESTIMONIAL OR OTHER EVIDENCE CONSIDERED:

THE ORIGINAL CORNER WAS ESTABLISHED IN 1859 BY WILLIAM E DAUGHERTY. ORIGINAL BEARING TREES: BIRCH 5" S20W 34LKS., ASPEN 5" S55E 20LKS. DORR CHAINED 37.82chs (2496.12') IN 1903, FROM THE NORTHEAST CORNER SOUTH TO THE EAST 1/4 OF SECTION 26.
 WILLIAM KELLY FOUND AN IRON PIPE AT THE 1/8 CORNER IN 1982 ON VOLUME 2 CSM PAGE 317. WE FOUND KELLY'S PIPE AT THE 1/8 CORNER, AND FOUND A ROD AT THE NORTHEAST CORNER THAT FIT WITH ROBERT POSS'S TIE SHEET. DOUBLING THE DISTANCE WE FELL 1.72' SHORT OF DORR'S RECORD DISTANCE IN 1903. SET A 1.25" IRON ROD WEST OF THE LOGGING ROAD AT THE EAST 1/4 OF SECTION 26.

● = LOCATION OF CORNER

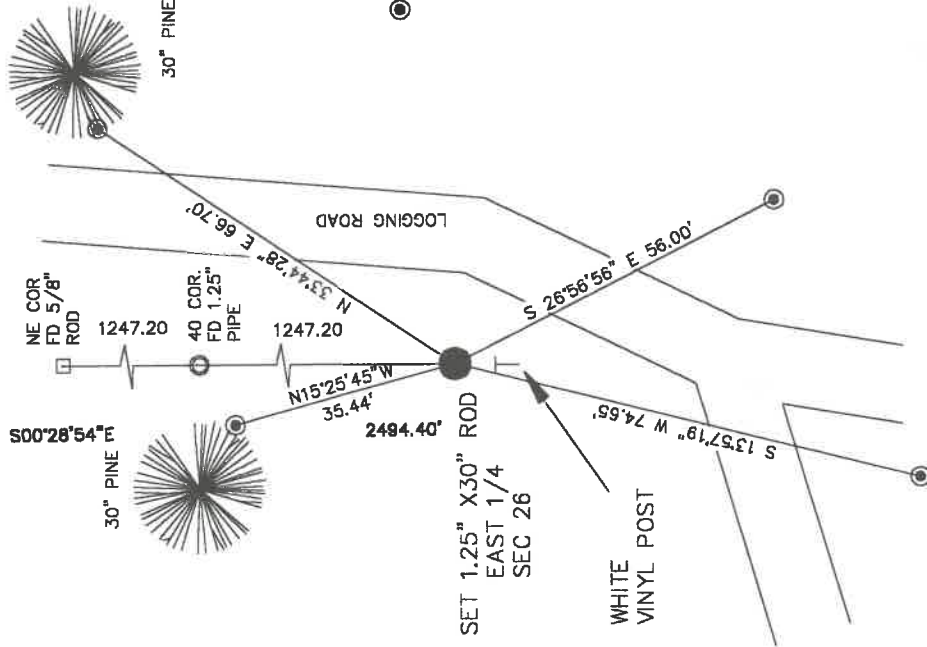


SECTION 26
 TOWNSHIP 34 NORTH, RANGE 11 EAST
 TOWN OF ELCHO
 LANGLADE COUNTY, WISCONSIN

CORNER WAS: (CHECK ALL THAT APPLY)

- RESTORED THROUGH ACCEPTANCE OF AN OBLITERATED EVIDENCE LOCATION
- RESTORED THROUGH ACCEPTANCE OF A FOUND PERPETUATED LOCATION
- CONSIDERED A LOST CORNER AND REESTABLISHED THROUGH LOST CORNER PROPORTIONATE METHODS (INCLUDE A PLAN VIEW DRAWING SHOWING DISTANCES AND DIRECTIONS TO OTHER PUBLIC LAND SURVEY CORNERS USED FOR PROPORTIONING AND DETERMINING THE CORNER LOCATION)
- RESTORED OR REESTABLISHED IN A LOCATION THAT DIFFERS FROM A PREVIOUS RESTORATION OR REESTABLISHMENT (INCLUDE A PLAN VIEW DRAWING AND INDICATE WHAT WAS SET AND/OR FOUND)
- CHECK IF THERE IS ADDITIONAL INFORMATION ON BACK

DESCRIBE THE MONUMENT AND ACCESSORIES USED TO PERPETUATE THE LOCATION OF THE CORNER. (INCLUDE A PLAN VIEW DRAWING AND INDICATE WHAT WAS SET AND/OR FOUND) ALSO INCLUDE FOUR TIES TO THE SECTION CORNER AND DESCRIPTION OF THE TIES.



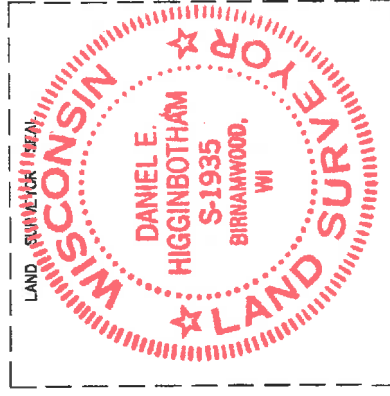
● SET 3/4" X 30" REBARS
 AT ALL TIES

DANIEL E. HIGGINBOTHAM

(Type or print name) CERTIFY THAT THE CORNER LOCATION SHOWN ON THIS RECORD WAS DETERMINED BY ME OR UNDER MY DIRECTION AND CONTROL AND THAT THIS U.S. PUBLIC LAND SURVEY MONUMENT RECORD IS CORRECT AND COMPLETE TO THE BEST OF MY KNOWLEDGE AND BELIEF.

D. Higginbotham
 SIGNATURE

6/29/01
 DATE



INDEX NO. T21

PLSS field condition report

Date: 4-21-20 Time of day: 8:00 am

By: Luke Williams

Section 26 Town 34 Range 11
(circle corner location on diagram)

Does the monument appear to be tilted, smashed, uprooted, covered or otherwise damaged by the windstorm?
YES NO

Are any bearing trees broken, uprooted, missing or otherwise damaged by the windstorm? YES NO

Survey are gone. Two large white Pine that are shown on the survey record monument map both have the top blown out.

4341126 2000

For the first four pictures, do them in this order:

Looking north, looking east, looking south, looking west and, by standing about 6 feet behind the monument, include the monument in each picture.

Then take a picture of the top of the monument, close enough to be able to read what is stamped on the cap. Make sure all pictures are in focus.



T21
34-11