

LANGLADE COUNTY U.S. PUBLIC LAND CORNER RESTORATION

The Southeast corner of Section 26, T. 34 N., R. 11 E., Langlade County, WI.

Corner was: (check all that apply)

4341126 0000

- Restored through acceptance of an obliterated evidence location.
- Restored through acceptance of a found perpetuated location.
- Determined to be lost and re-established through proportionate methods.
Show bearings and distances to PLSS corners used for proportioning, and show original distances).
- Restored/recovered/re-established in a location that differs from a previously established position.
(Show difference in plan view below).
- Check here if additional information is shown on the reverse side of this form.

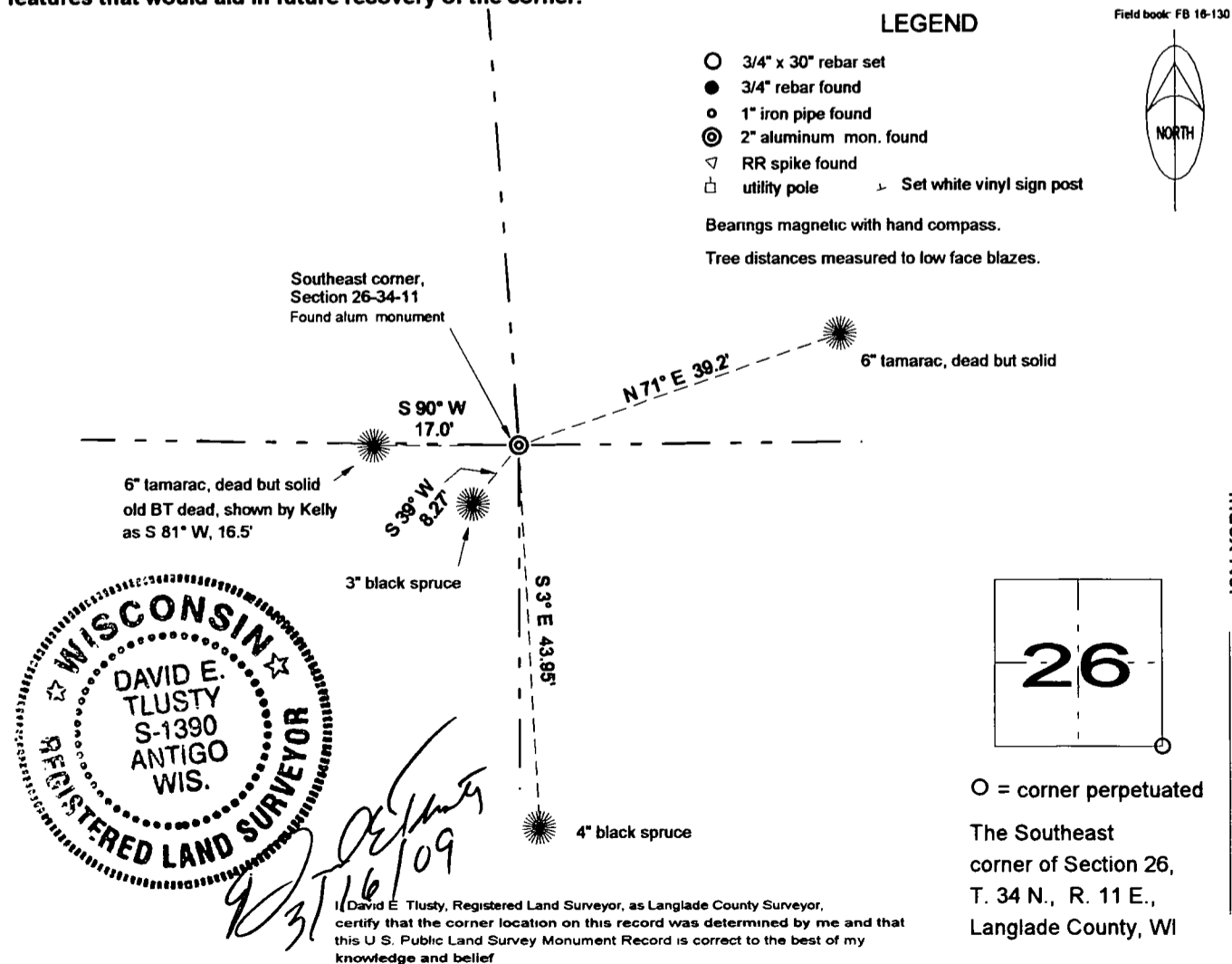
Describe record evidence, recovered physical evidence, occupational evidence, testimonial evidence and all other evidence considered in the recovery/restoration of the corner.

The original corner was established in 1859 by William E. Daugherty. Original bearing trees, spruce, 6", S45°E, 70 links and a spruce, 9", N85°W, 70 links. In 1982, former surveyor Kelly found an old scribed 3" x 3" post with old BT's, found in place. He set a 3" x 42" aluminum cap monument and 3" x 3" tam. post replacing existing scribed post. He marked 3 new tam. BT's. 04/29/05 D. Tlusty found Kellys aluminum monument in somewhat open spruce swamp. Having no other evidence or information on this corner, I accept the aluminum monuement as the best evidence of the corner.

Physical description of the monument set:

Did not replace the existing aluminum monument which is in good condition, flush with swamp.
Set a 6' white vinyl sign post on west edge of monument. Top of sign post is up 2.2' above monument

Describe the accessories used to perpetuate the corner. Include a plan view drawing and accessories found/set. Describe measuring point on bearing trees. Show any topographic features that would aid in future recovery of the corner.



CERTIFIED LAND CORNER RESTORATION

Index No. V-21

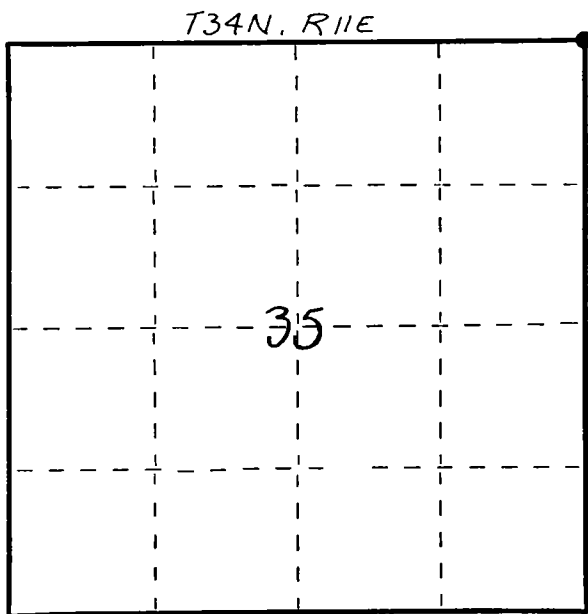
State of Wisconsin }
County of LANGLADE } ss.

I WILLIAM F. KELLY, do hereby certify that on the 7th day of APRIL, 1982, I found evidence of the NE corner of SECT. 35 Township 34, North, Range 11 EAST, Fourth Principal Meridian, as described hereon; and that from this evidence I established a new monument and accessories as described hereon to perpetuate the original location of this corner.

Resident witnesses:

.....
.....
.....

FORM 985 H. C. MILLER CO., MILWAUKEE



○ = Corner monument restored.

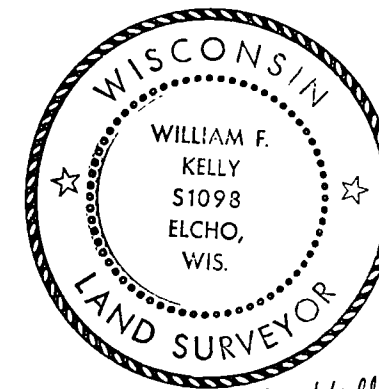
History of original corner establishment:

ORIGINAL CORNER ESTABLISHED BY
WILLIAM DAUGHERTY IN JULY, 1859.

Description of corner evidence found:

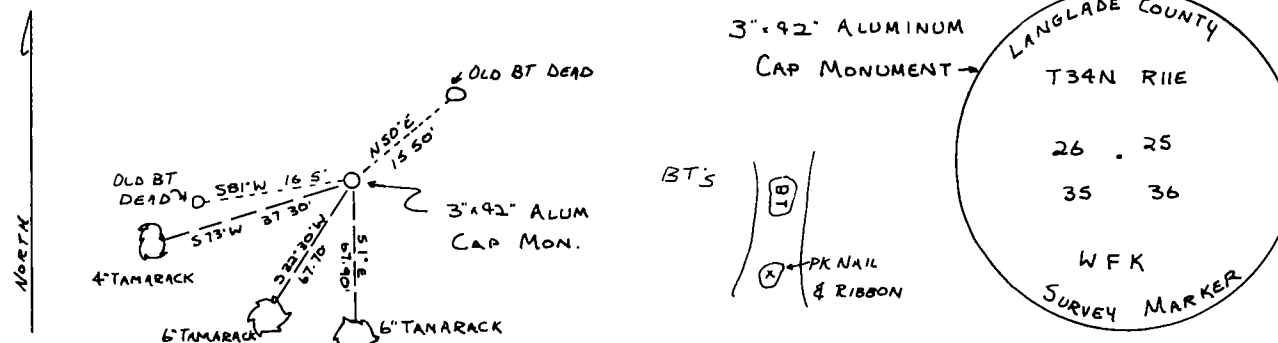
OLD, SCRIBED 3"x3" POST WITH OLD BT'S, FOUND IN PLACE.

SET 3"x42" ALUMINUM CAP MONUMENT & 3"x3" TAM POST REPLACING EXISTING SCRIBED POST.
MARKED NEW BEARING TREES



William F. Kelly

Description of monument and accessories I established to perpetuate the original location of this corner.



Dated at ELCHO, Wis., this 28th day of JULY, 1982.

Signature William F. Kelly Title COUNTY SURVEYOR Registration No. 1098
(County Surveyor, Registered Land Surveyor, or other duly authorized official)

Office of Register of Deeds, County of....., I hereby certify that the within instrument was filed in this office for record on the..... day of....., 19..... at..... o'clock..... M.

.....
(Register of Deeds)

By..... Deputy