

CERTIFIED LAND CORNER RESTORATION

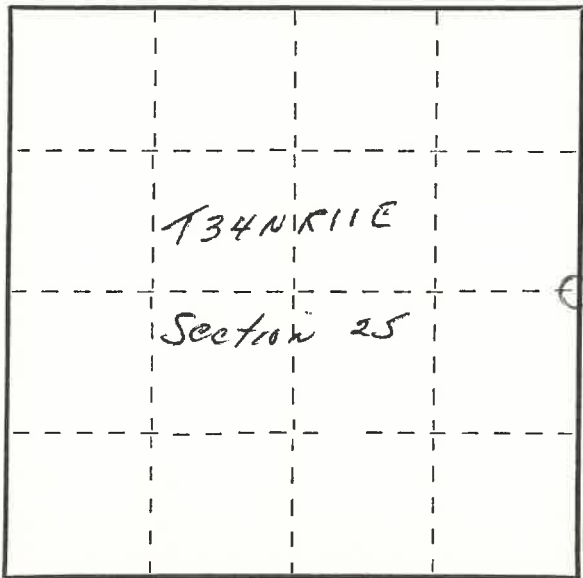
Index No. T-25

State of Wisconsin }
County of Langlade } ss.

I, Raymond J. Hallisy, do hereby certify that on the 27th day of March, 1982, I found evidence of the 1/4 corner of Section 25 & 30 Township 34, North, Range 11 & 12E, Fourth Principal Meridian, as described hereon; and that from this evidence I established a new monument and accessories as described hereon to perpetuate the original location of this corner.

Resident witnesses:

.....
.....
.....



○ = Corner monument restored.

History of original corner establishment:

Corner set in 1930 circa by C. W. Borth

Description of corner evidence found:

Found hole from stake, stake gone.

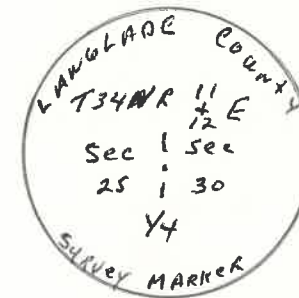
Old BT's		
Pine stump	16" S55E	37.3 Ft.
" "	16" S15W	11.5 Ft.
" "	12" N30W	10.5 Ft.
Red Pine	20" N75E	62.3 Ft. (Marks plain)

Description of monument and accessories I established to perpetuate the original location of this corner.

Set 2" Aluminum pipe with cap

New BT's

12"	White pine	N13E	4.2 Ft.
7"	White pine	N72W	9.3 Ft.
7"	Red Maple	S10E	2.7 Ft.



Dated at Antigo, Wis., this 27th day of March, 1982.

Signature Raymond J. Hallisy Title Land surveyor Registration No. S-685
(County Surveyor, Registered Land Surveyor, or other duly authorized official)

Office of Register of Deeds, County of _____, I hereby certify that the within instrument was filed in this office for record on the _____ day of _____, 19____ at _____ o'clock _____ M.

.....
(Register of Deeds)

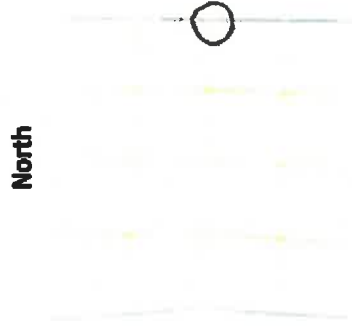
By.....Deputy

PLSS field condition report

Date: 4-22-20 Time of day: 10:30 a.m.

By: Luke Williams

Section 25 Town 34 Range 11
(circle corner location on diagram)



424125 2000

Does the monument appear to be tilted, smashed, uprooted, covered or otherwise damaged by the windstorm?
YES NO

Are any bearing trees broken, uprooted, missing or otherwise damaged by the windstorm? YES NO

All of the bearing trees are missing. Area suffered extreme damage and has recently been logged. Very few trees remain in area.

TAKE PICTURES
For the first four pictures, do them in this order:

Looking north, looking east, looking south, looking west and, by standing about 6 feet behind the monument, include the monument in each picture.

Then take a picture of the top of the monument, close enough to be able to read what is stamped on the cap. Make sure all pictures are in focus.

T25

34-11