

CERTIFIED LAND CORNER RESTORATION

Index No. 0-24

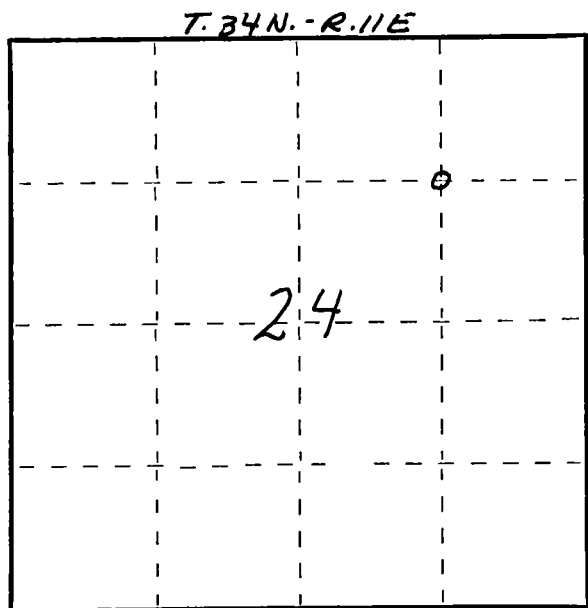
State of Wisconsin }  
 County of LANGLADE } ss.

I, WILLIAM F. KELLY, do hereby certify that on the 10<sup>TH</sup> day of DECEMBER, 1976, I found evidence of the NE 1/16 corner of SECTION 24 Township 34, North, Range 11E, Fourth Principal Meridian, as described hereon; and that from this evidence I established a new monument and accessories as described hereon to perpetuate the original location of this corner.

Resident witnesses:

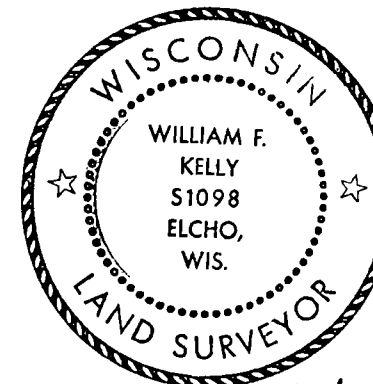
ROBERT J. LYLE SCOUT CAMP DIRECTOR

FORM 985 H. C. MILLER CO., MILWAUKEE



○ = Corner monument restored.

History of original corner establishment:

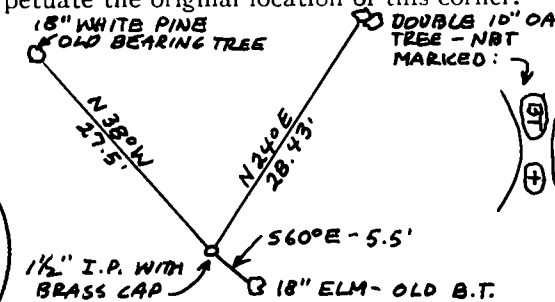
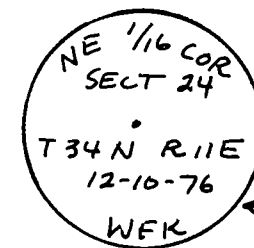
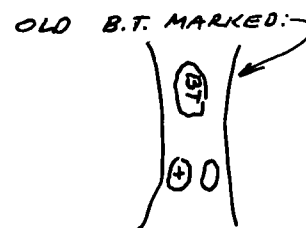


*William F. Kelly 12-10-76*

Description of corner evidence found:

FOUND OLD IRON PIPE FROM PREVIOUS SURVEY, IDENTIFIED AS THE NE 1/16 CORNER SECT 24. ALSO FOUND OLD WITNESS TREES

Description of monument and accessories I established to perpetuate the original location of this corner.  
SET NEW 1 1/2" I.P. WITH BRASS CAP. AND MARKED WITNESS TREES.



Dated at ELCHO, Wis., this 10<sup>TH</sup> day of DECEMBER, 1976

Signature William F. Kelly Title REGISTERED LAND SURVEYOR Registration No. S1098  
 (County Surveyor, Registered Land Surveyor, or other duly authorized official)

Office of Register of Deeds, County of \_\_\_\_\_, I hereby certify that the within instrument was filed in this office for record on the \_\_\_\_\_ day of \_\_\_\_\_, 19\_\_\_\_ at \_\_\_\_\_ o'clock \_\_\_\_\_ M.

(Register of Deeds)

By \_\_\_\_\_ Deputy