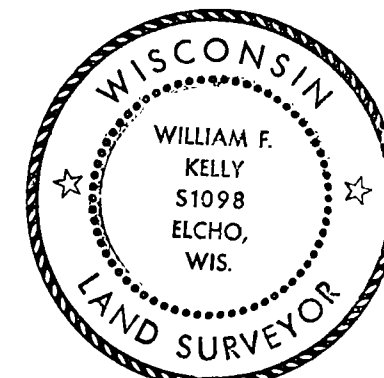


CERTIFIED LAND CORNER RESTORATION

Index No. R-22

State of Wisconsin }  
County of LANGLADE } ss.

History of original corner establishment:



*William F. Kelly*

I WILLIAM F. KELLY, do hereby certify that on the 7<sup>TH</sup> day of DECEMBER, 1976, I found evidence of the W 1/8 corner of SECTIONS 24 & 25 Township 34, North, Range 11 E, Fourth Principal Meridian, as described hereon; and that from this evidence I established a new monument and accessories as described hereon to perpetuate the original location of this corner.

Description of corner evidence found:

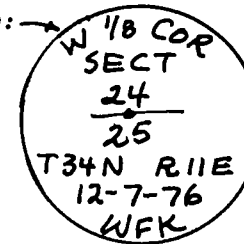
FOUND IRON PIPE AT CORNER OF FENCE LINES. I.P. SET ON PREVIOUS SURVEY. IDENTIFIED AS W 1/8 CORNER SECTION 24/25.

Resident witnesses:

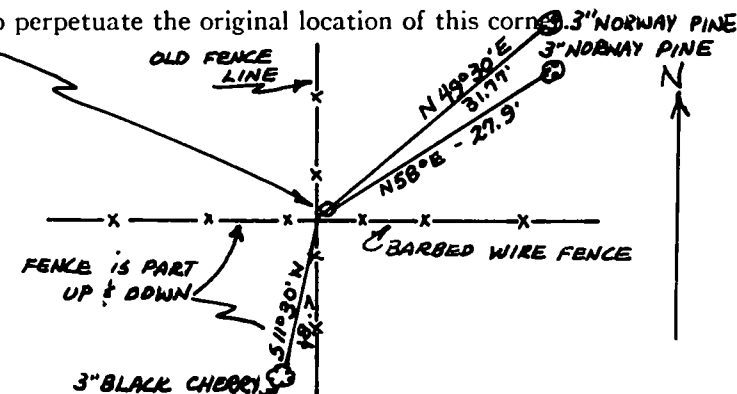
R.S. LYLE SCOUT CAMP DIRECTOR

Description of monument and accessories I established to perpetuate the original location of this corner:

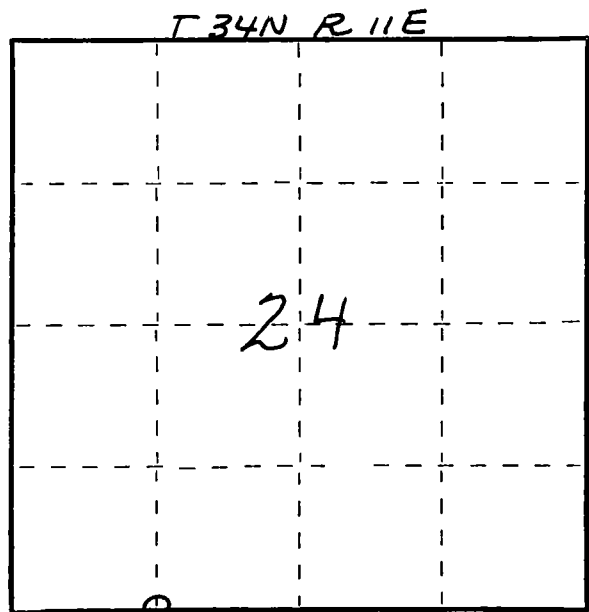
SET 1/2" IRON PIPE WITH BRASS CAP. BRASS CAP MARKED:



MARKED WITNESS TREES WITH A (A) MARK.



FORM 985 H. C. MILLER CO., MILWAUKEE



○ = Corner monument restored.

Dated at ELCHO, Wis., this 7<sup>TH</sup> day of DECEMBER, 1976

Signature William F. Kelly Title REGISTERED LAND SURVEYOR Registration No. 51098  
(County Surveyor, Registered Land Surveyor, or other duly authorized official)

Office of Register of Deeds, County of \_\_\_\_\_, I hereby certify that the within instrument was filed in this office for record on the \_\_\_\_\_ day of \_\_\_\_\_, 19\_\_\_\_ at \_\_\_\_\_ o'clock \_\_\_\_\_ M.

(Register of Deeds)

By \_\_\_\_\_ Deputy