

LANGLADE COUNTY U.S. PUBLIC LAND CORNER RESTORATION

The South quarter corner of Section 24, T. 34 N., R. 11 E., Langlade County, WI.

Corner was: (check all that apply)

- Restored through acceptance of an obliterated evidence location.
- Restored through acceptance of a found perpetuated location.
- Determined to be lost and re-established through proportionate methods.
- Show bearings and distances to PLSS corners used for proportioning, and show original distances).
(Show difference in plan view below).
- Check here if additional information is shown on the reverse side of this form.

4341124 0020

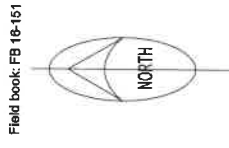
Describe record evidence, recovered physical evidence, occupational evidence, testimonial evidence and all other evidence considered in the recovery/restoration of the corner.

The original corner was established in 1859 by William E. Daugherty. Original bearing trees: w pine, 9", N31W, 12 links and an aspen, 7", S35E, 35 links. In 1959, Sy Poskie surveyed the scout land in Section 24. He found a pipe at a fence corner about a quarter mile west of here and extended the section line by starting at the SW corner of Sec. 24, and running east through that pipe at the fence corner. At double the distance, he set a monument for this corner. His resulting position for this corner is not supported by any record evidence and he made no mention of any recovered physical evidence. His position creates a 13 degree deflection in the section line and causes the section line distances each way from here to differ by 387 feet. I consider the Poskie location as being created by an improper procedure with no supporting evidence. After a thorough search for remaining original evidence, I considered the corner "lost" and re-established it by single proportionate measurement between adjoining section corners. I set the monument and perpetuated said location as shown below.

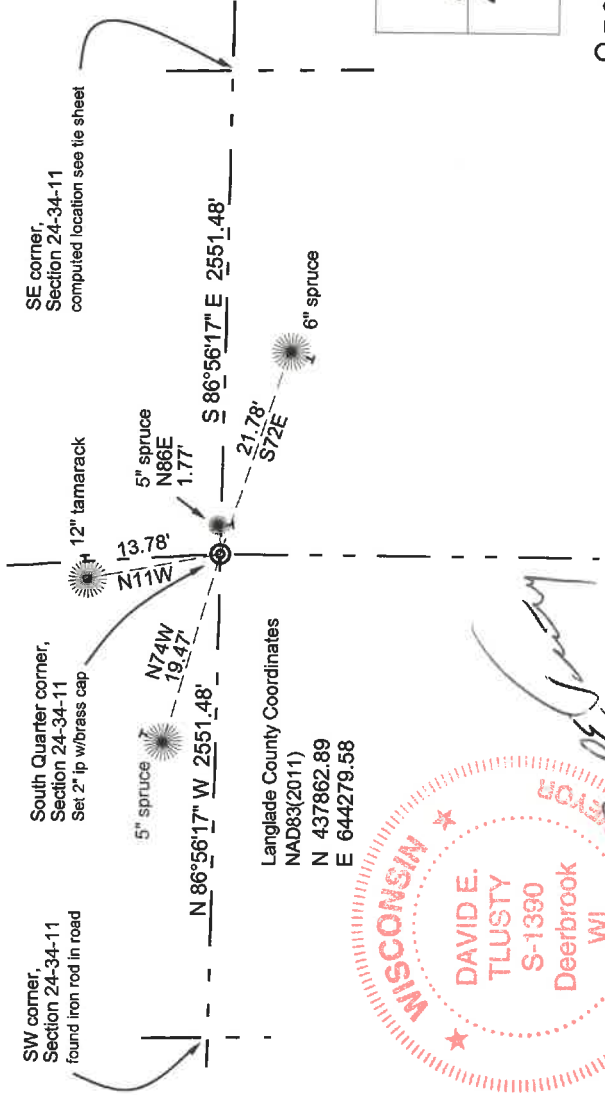
Physical description of the monument set:

- I set a 2" iron pipe with 3 1/4" brass cap for the corner.
- Set a 6' white vinyl sign post 0.4' north of the monument.

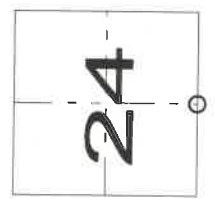
Describe the accessories used to perpetuate the corner. Include a plan view drawing and accessories found/set. Describe measuring point on bearing trees. Show any topographic features that would aid in future recovery of the corner.



Bearings magnetic with hand compass.
The distances measured to an aluminum nail in a low blaze on the right side (as viewed from the corner) of the trees shown. Trees have a blaze and bearing tree sign facing the corner.



Index No. R-23 34-11



O = corner perpetuated
The South Quarter corner of Section 24, T. 34 N., R. 11 E., Langlade County, WI

David E. Tlusty, Registered Land Surveyor, as Langlade County Surveyor, certify that the corner location on this record was determined by me and that this U.S. Public Land Survey Monument Record is correct to the best of my knowledge and belief.

CERTIFIED LAND CORNER RESTORATION

Index No. R-23

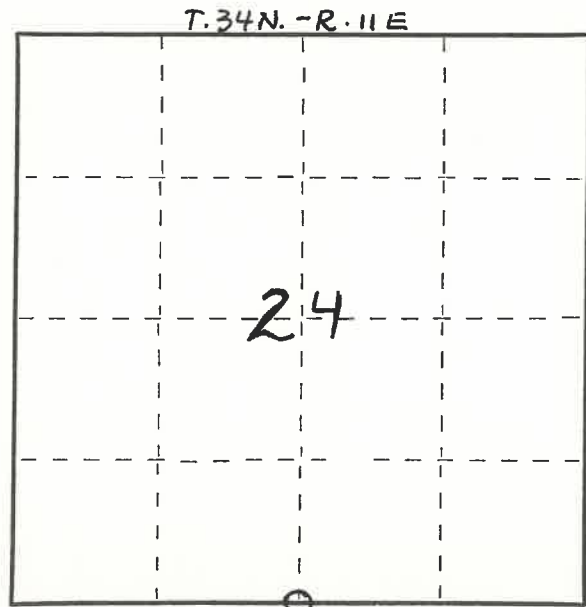
State of Wisconsin }
County of LANGLADE } ss.

I WILLIAM F. KELLY, do hereby certify that on the 7TH day of DECEMBER, 1976, I found evidence of the 5 1/4 corner of SECTION 24 Township 34, North, Range 11E, Fourth Principal Meridian, as described hereon; and that from this evidence I established a new monument and accessories as described hereon to perpetuate the original location of this corner.

Resident witnesses:

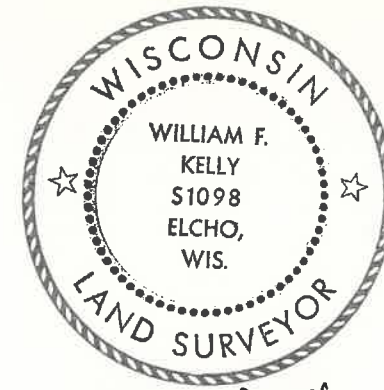
R. S. LYLE SCOUT CAMP DIRECTOR

FORM 985 H. C. MILLER CO., MILWAUKEE



○ = Corner monument restored.

History of original corner establishment:



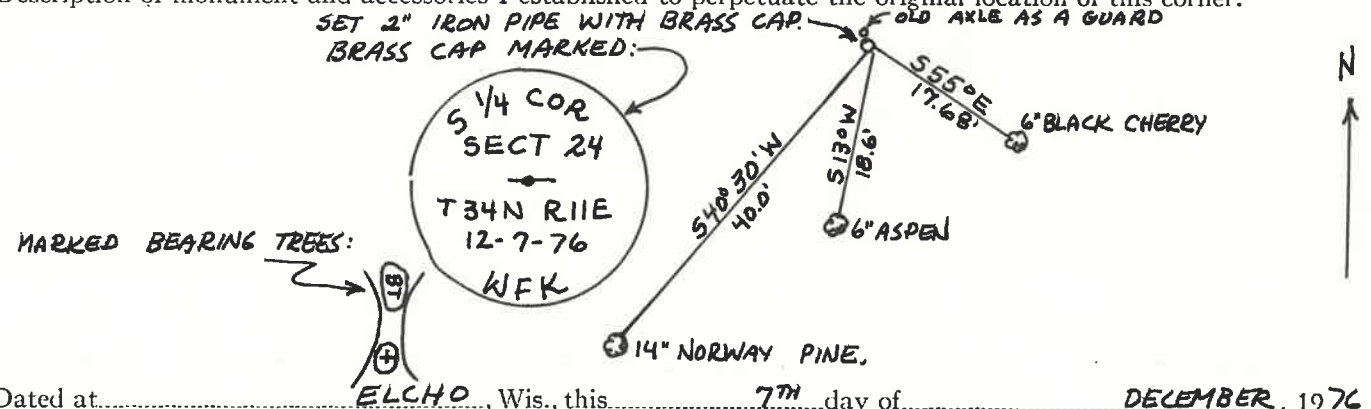
Description of corner evidence found:

LOCATED OLD CAR AXLE IDENTIFIED AS 1/4 CORNER.

William F. Kelly

See Now!

Description of monument and accessories I established to perpetuate the original location of this corner.



Dated at ELCHO, Wis., this 7TH day of DECEMBER, 1976

Signature William F. Kelly Title REGISTERED LAND SURVEYOR Registration No. S1098
(County Surveyor, Registered Land Surveyor, or other duly authorized official)

Office of Register of Deeds, County of _____, I hereby certify that the within instrument was filed in this office for record on the _____ day of _____, 19____ at _____ o'clock _____ M.

(Register of Deeds)

By _____ Deputy