

# LANGLADE COUNTY U.S. PUBLIC LAND CORNER RESTORATION

The Southeast corner of Section 24, T. 34 N., R. 11 E., Langlade County, WI.

**Corner was: (check all that apply)**

4341124 0000

- Restored through acceptance of an obliterated evidence location.
- Restored through acceptance of a found perpetuated location.
- Determined to be lost and re-established through proportionate methods.
- Show bearings and distances to PLSS corners used for proportioning, and show original distances).
- Restored/recovered/re-established in a location that differs from a previously established position.
- (Show difference in plan view below).
- Check here if additional information is shown on the reverse side of this form.

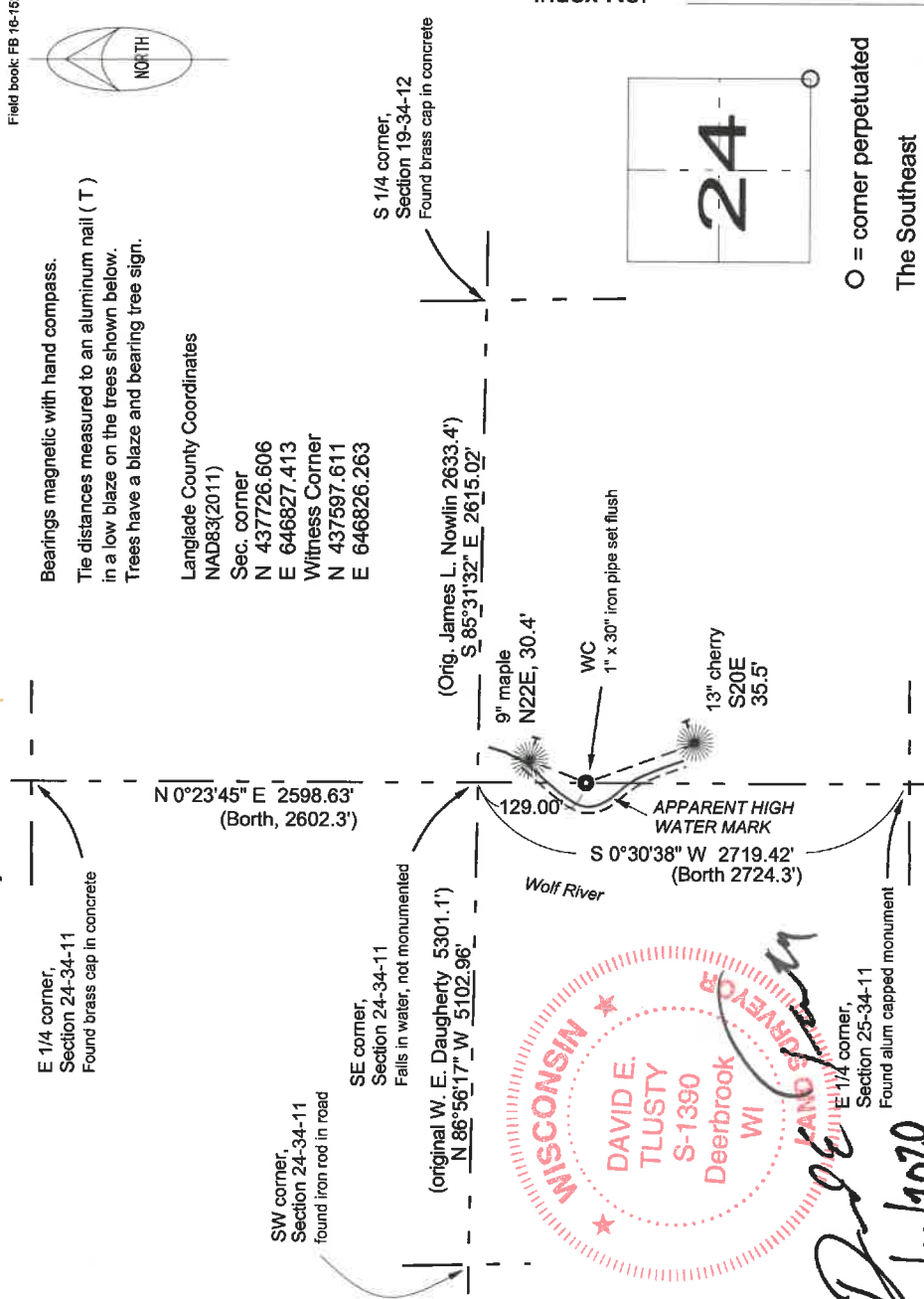
**Describe record evidence, recovered physical evidence, occupational evidence, testimonial evidence and all other evidence considered in the recovery/restoration of the corner.**

The original corner was established in 1857 by Alfred Millard; corner falls in river. Millard established a witness corner at 78.50 chains. Bearing trees for the witness corner: W. pine, 15", N78E, 282 links and a W. pine, 18", S58E, 220 links. In 1935, Charles Borth ran north on the east line of section 25 and hit this WC at 2526.3' north of the quarter corner. He found "old scribed pine stake about rotten". He found both original pine BT's, the NE being rotten stump; the SE being a rampike. He said this WC: "cor. in slough". In 1936, Borth ran south from the quarter corner of 24 & 19, and at 2701.6 feet, he fell 9.5' east of this Witness corner. 2011, D. Tusty, after several attempts of searching for the "corner in slough", I used the recovered original pine stump to re-establish the WC location. As the corner falls in slough as described by Borth and because the chance of a reset corner monument being washed out by spring ice melt, is great, I set a new witness corner, 30 feet to the south, on the section line, on a piece of high ground. The new witness corner falls 15 feet south, 10 feet east and 18 feet north of the apparent high water mark of the Wolf River. I set the monument and preserved the corner location at shown below. Considering the difficult river bottom terrain both north and south of here, Borths distances compare very well with actual distances. See sketch below.

**Physical description of the monument set:**

- I set a 1" x 30" iron pipe for the witness corner.
- Set a 6' white vinyl sign post 0.4' north of the monument.

**Describe the accessories used to perpetuate the corner. Include a plan view drawing and accessories found/set. Describe measuring point on bearing trees. Show any topographic features that would aid in future recovery of the corner.**



I, David E. Tusty, Registered Land Surveyor, as Langlade County Surveyor, certify that the corner location on this record was determined by me and that this U.S. Public Land Survey Monument Record is correct to the best of my knowledge and belief.

*David E. Tusty*  
2/11/2020

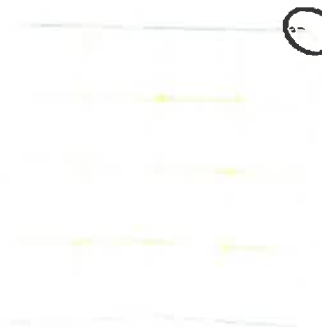
PLSS field condition report

Date: 4-23-20 Time of day: 8:30 am

By: Lvke Williams

Section 24 Town 34 Range 11  
(circle corner location on diagram)

North



Does the monument appear to be tilted, smashed, uprooted, covered or otherwise damaged by the windstorm?  
YES  NO

Are any bearing trees broken, uprooted, missing or otherwise damaged by the windstorm? YES  NO

*The black cherry bearing tree was blown over from the storm.*

434124 0000

TAKE PICTURES

For the first four pictures, do them in this order:

Looking north, looking east, looking south, looking west and, by standing about 6 feet behind the monument, include the monument in each picture.

Then take a picture of the top of the monument, close enough to be able to read what is stamped on the cap. Make sure all pictures are in focus.

R 25  
34-11