

CERTIFIED LAND CORNER RESTORATION

34-4

Index No. 0-20

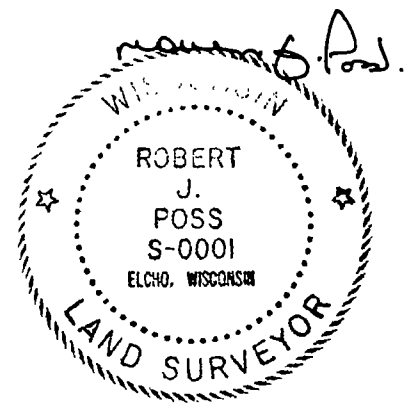
State of Wisconsin }  
County of Lanlade } ss.

I, Robert J. Poss, do hereby certify that on the 20<sup>th</sup> day of May, 1968, I found evidence of the NE 1/16 corner of Section 23 Township 34, North, Range 11 East, Fourth, Principal Meridian, as described hereon; and that from this evidence I established a new monument and accessories as described hereon to perpetuate the original location of this corner.

History of original corner establishment:

Description of corner evidence found:

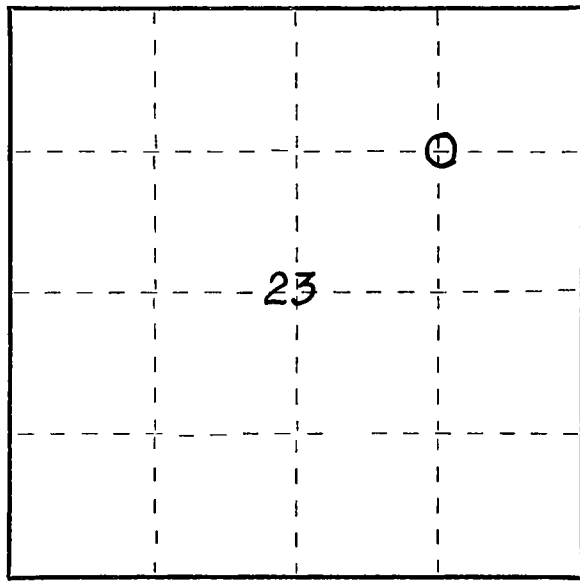
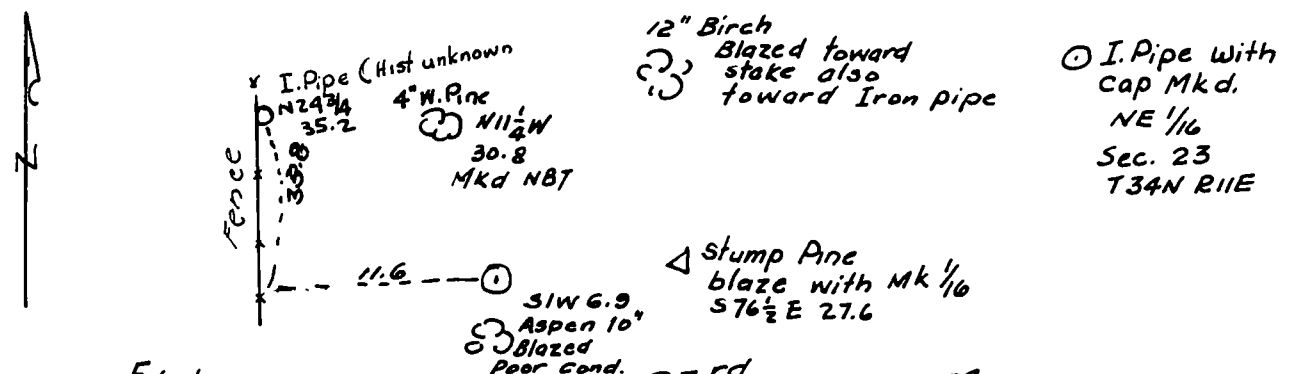
Found 2 BT's & Old Ford axle



Resident witnesses:

.....  
.....  
.....

Description of monument and accessories I established to perpetuate the original location of this corner.



Dated at Elcho, Wis., this 23<sup>rd</sup> day of May, 1968.

Signature Robert J. Poss Title Reg. Land Surveyor Registration No. 5-1  
(County Surveyor, Registered Land Surveyor, or other duly authorized official)

Office of Register of Deeds, County of....., I hereby certify that the within instrument was filed in this office for record on the..... day of....., 19..... at..... o'clock..... M.

(Register of Deeds)

By..... Deputy

○ = Corner monument restored.

FORM 985 H. C. MILLER CO., MILWAUKEE