

4341123 2020

U.S. PUBLIC LAND SURVEY MONUMENT RECORD

(Prepared and as required by S. A-E 7.08 WI Administrative Code)

The CENTER 1/4 corner of Section 23, T. 34 N., R. 11 E., Langlade County, WI
 Corner was (check all that apply)

- Restored through acceptance of an obliterated evidence location.
- Restored through acceptance of a found perpetuated location.
- Determined to be lost and re-established through proportionate methods. (show bearings and distances to PLSS corners used for proportioning.)
- Restored/recovered/re-established in a location that differs from a previously established position. (Show difference in plan view below.)
- Check here if additional information is shown on the reverse side of this form.

Describe record evidence, recovered physical evidence, occupational evidence, testimonial evidence, and all other evidence considered in the recovery/restoration of the corner.

This corner was not set as part of the original GLO survey.

2005 - Matthew Hoglund references this corner on Certified Survey Map Volume 12 Page 141 & 142. He found a 1.5" iron pipe at the corner location.

2016 - I found the iron pipe called for by Hoglund. This position matches within 5.5 feet of the intersection of the 1/4 lines. I accept this as the corner location and tied it out as follows.

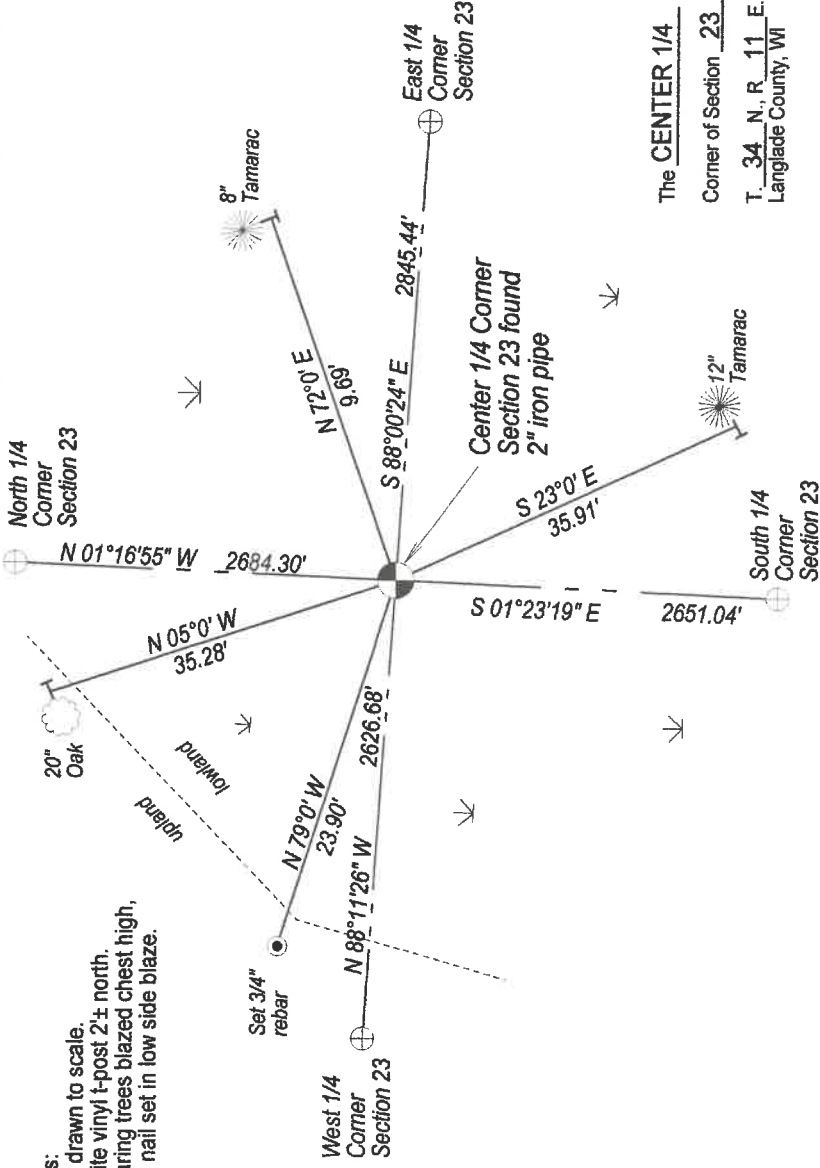
Physical description of the monument set:

I accept the 2" iron pipe as the corner location and tied it out as follows.

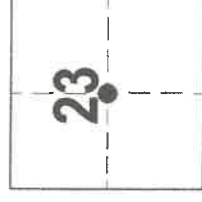
Describe the accessories used to perpetuate the location of the corner. Include a plan view drawing and indicate accessories found/set. Describe measuring point on bearing trees. Show any topographic features that would aid in future recovery of the corner.

Notes:

- Not drawn to scale.
- White vinyl t-post 2"± north.
- Bearing trees blazed chest high, and nail set in low side blaze.

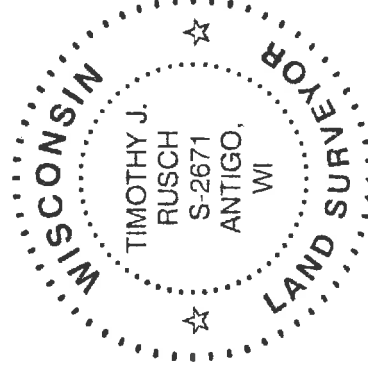


The CENTER 1/4
 Corner of Section 23
 T. 34 N., R. 11 E.
 Langlade County, WI



● = Location of corner

SURVEYORS SEAL



I, Timothy J. Rusch certify that the corner location shown on this record was determined by me or under my direction and control and that this U.S. Public Land Survey Monument Record is correct and complete to the best of my knowledge and belief.

Timothy J. Rusch 07-21-2020 Date

Signature