

4341123 2000

# U.S. PUBLIC LAND SURVEY MONUMENT RECORD

(Prepared and as required by S. A-E 7.08 WI Administrative Code)

The WEST 1/4 corner of Section 24 T. 34 N., R. 11 E., Langlade County, WI  
Corner was (check all that apply)

- Restored through acceptance of an obliterated evidence location.
- Restored through acceptance of a found perpetuated location.
- Determined to be lost and re-established through proportionate methods. (show bearings and distances to PLSS corners used for proportioning.)
- Restored/recovered/re-established in a location that differs from a previously established position. (Show difference in plan view below.)
- Check here if additional information is shown on the reverse side of this form.

**Describe record evidence, recovered physical evidence, occupational evidence, testimonial evidence, and all other evidence considered in the recovery/restoration of the corner.**

1859 - W.E. Daugherty set original 1/4 corner post; Bich 6", S70°W, 12 links; Birch 6", N13°E, 30 links.

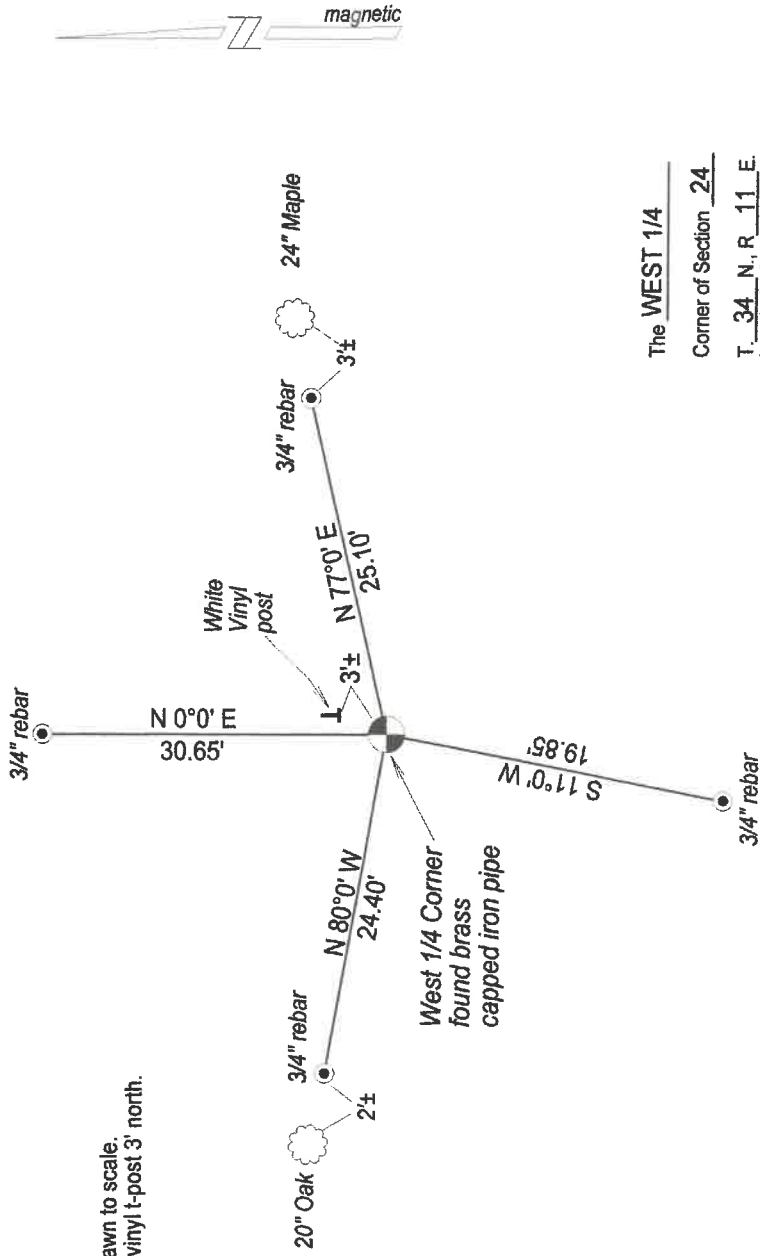
2005 - Matthew Hoglund references this corner on Certified Survey Map Volume 12 Page 141 & 142. He calls the corner "iron strap found - replaced with a 2" x 30" iron pipe w/ brass cap.

2016 - I found the brass capped iron pipe set by Hoglund in 2005. I also found 4 existing ties at corner location.

### Physical description of the monument set:

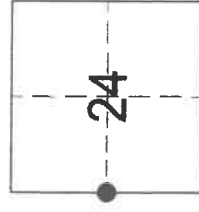
I accept the brass capped iron pipe as the corner, and tied it out as follows.

Describe the accessories used to perpetuate the location of the corner. Include a plan view drawing and indicate accessories found/set. Describe measuring point on bearing trees. Show any topographic features that would aid in future recovery of the corner.



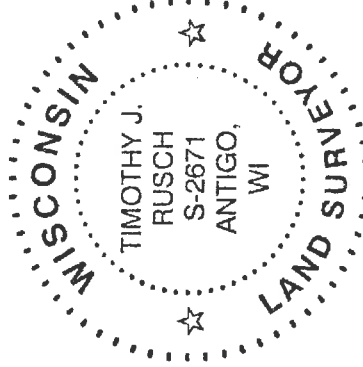
Notes:  
 - Not drawn to scale.  
 - White vinyl t-post 3' north.

The WEST 1/4  
 Corner of Section 24  
 T. 34 N., R. 11 E.  
 Langlade County, WI



● = Location of corner

SURVEYORS SEAL



I, Timothy J. Rusch certify that the corner location shown on this record was determined by me or under my direction and control and that this U.S. Public Land Survey Monument Record is correct and complete to the best of my knowledge and belief.

Matthew Hoglund 07-21-2020  
 Signature Date