

CERTIFIED LAND CORNER RESTORATION

Index No. Q-18

State of Wisconsin }  
County of LANGLADE } ss.

History of original corner establishment:



*William F. Kelly*

I, William F. Kelly, do hereby certify that on the 3<sup>rd</sup> day of NOVEMBER, 1974, I found evidence of the SW 1/16 corner of SECT 23 Township 34, North, Range 11 E, Fourth Principal Meridian, as described hereon; and that from this evidence I established a new monument and accessories as described hereon to perpetuate the original location of this corner.

Description of corner evidence found:

1 1/2" PIPE SET IN CONCRETE ON PLATTED SUBDIVISION

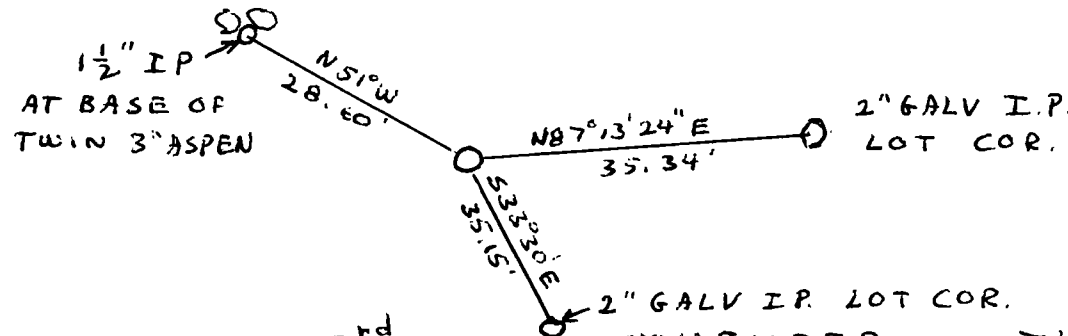
Resident witnesses:

H. Wright

Description of monument and accessories I established to perpetuate the original location of this corner.

SET 1 1/2" B.I.P. WITH BRASS CAP MARKED

SW 1/16 COR  
SECT  
23  
T34N R11E  
W.F.K.



Dated at ELCHO, Wis., this 3<sup>rd</sup> day of NOVEMBER, 1974.

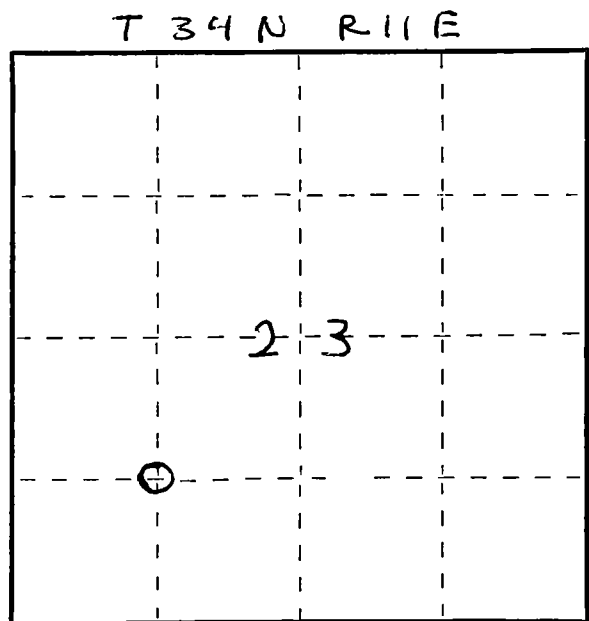
Signature William F. Kelly Title Reg. Land Surveyor Registration No. S. 1098  
(County Surveyor, Registered Land Surveyor, or other duly authorized official)

Office of Register of Deeds, County of \_\_\_\_\_, I hereby certify that the within instrument was filed in this office for record on the \_\_\_\_\_ day of \_\_\_\_\_, 19\_\_\_\_ at \_\_\_\_\_ o'clock \_\_\_\_\_ M.

(Register of Deeds)

By \_\_\_\_\_ Deputy

FORM 985 M. C. MILLER CO., MILWAUKEE



○ = Corner monument restored.