

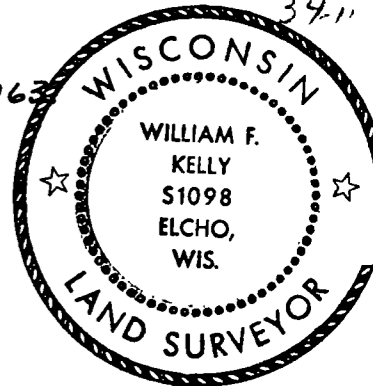
CERTIFIED LAND CORNER RESTORATION

Index No. Q-20 3411

State of Wisconsin }  
County of LANGLADE } ss.

History of original corner establishment:

CORNER ESTABLISHED ON SURVEY BY SYM POSKIE ON NOV. 19, 1963



*William F. Kelly  
15 April 1976*

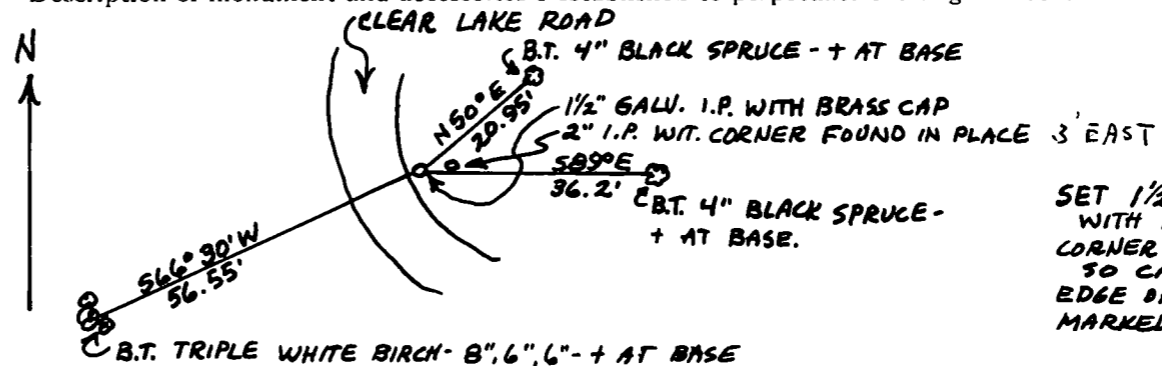
I WILLIAM F. KELLY, do hereby certify that on the 7<sup>TH</sup> day of APRIL, 1976, I found evidence of the SE 1/16 CORNER SECTION 23 corner of SECTION 23 Township 34, North, Range 11 E, Fourth Principal Meridian, as described hereon; and that from this evidence I established a new monument and accessories as described hereon to perpetuate the original location of this corner.

Description of corner evidence found:

LOCATED WIT. PIPE TO THE SE 1/16 CORNER SECT. 23, T. 34N. - R. 11E. TREE MARKED BY SYM POSKIE HAS BEEN CUT DOWN. BLAZE MARK WAS VISIBLE ON TRUNK LYING ON GROUND.

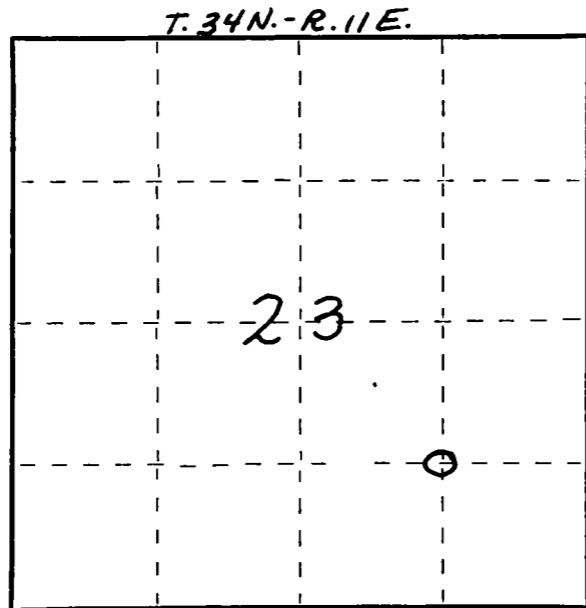
Resident witnesses:

Description of monument and accessories I established to perpetuate the original location of this corner.



SET 1/2" GALVANIZED IRON PIPE WITH BRASS CAP MARKED: CORNER IS IN SHOULDER OF ROAD SO CAP IS 4" UNDER SURFACE. EDGE OF PAVEMENT IS 2' WEST. MARKED NEW WITNESS TREES.

FORM 985 H. C. MILLER CO., MILWAUKEE



○ = Corner monument restored.

Dated at ELCHO, Wis., this 7<sup>TH</sup> day of APRIL, 1976.

Signature William F. Kelly Title REGISTERED LAND SURVEYOR Registration No. 51098  
(County Surveyor, Registered Land Surveyor, or other duly authorized official)

Office of Register of Deeds, County of \_\_\_\_\_, I hereby certify that the within instrument was filed in this office for record on the \_\_\_\_\_ day of \_\_\_\_\_, 19\_\_\_\_ at \_\_\_\_\_ o'clock \_\_\_\_\_ M.

(Register of Deeds)

By \_\_\_\_\_ Deputy